

Service
Service
Service



Philips Domestic Appliances and Personal Care

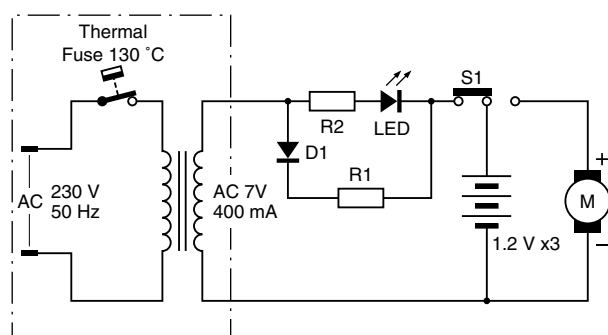
Service Manual

PRODUCT INFORMATION

- This product meets the requirements regarding interference suppression on radio and TV.
- After the product has been repaired, it should function properly and has to meet the safety requirements as officially laid down at this moment.

TECHNICAL INFORMATION

- Adapter AC / AC : 230 V / 7 V AC - 400 mA
- Rechargeable batteries : 3 x NiCd - 1600 mAh
- Run time : 9.5 min.
- Charging time : 16 hours trickle charging
- Charge indicator : LED
- Charging base : Multi mountable
incl. accessory storage
- Accessories : Crevice and brush
- Application environment : Dry
- Filter : 2-stage type, washable
- Dust capacity : 300 ml



REPAIR INSTRUCTIONS

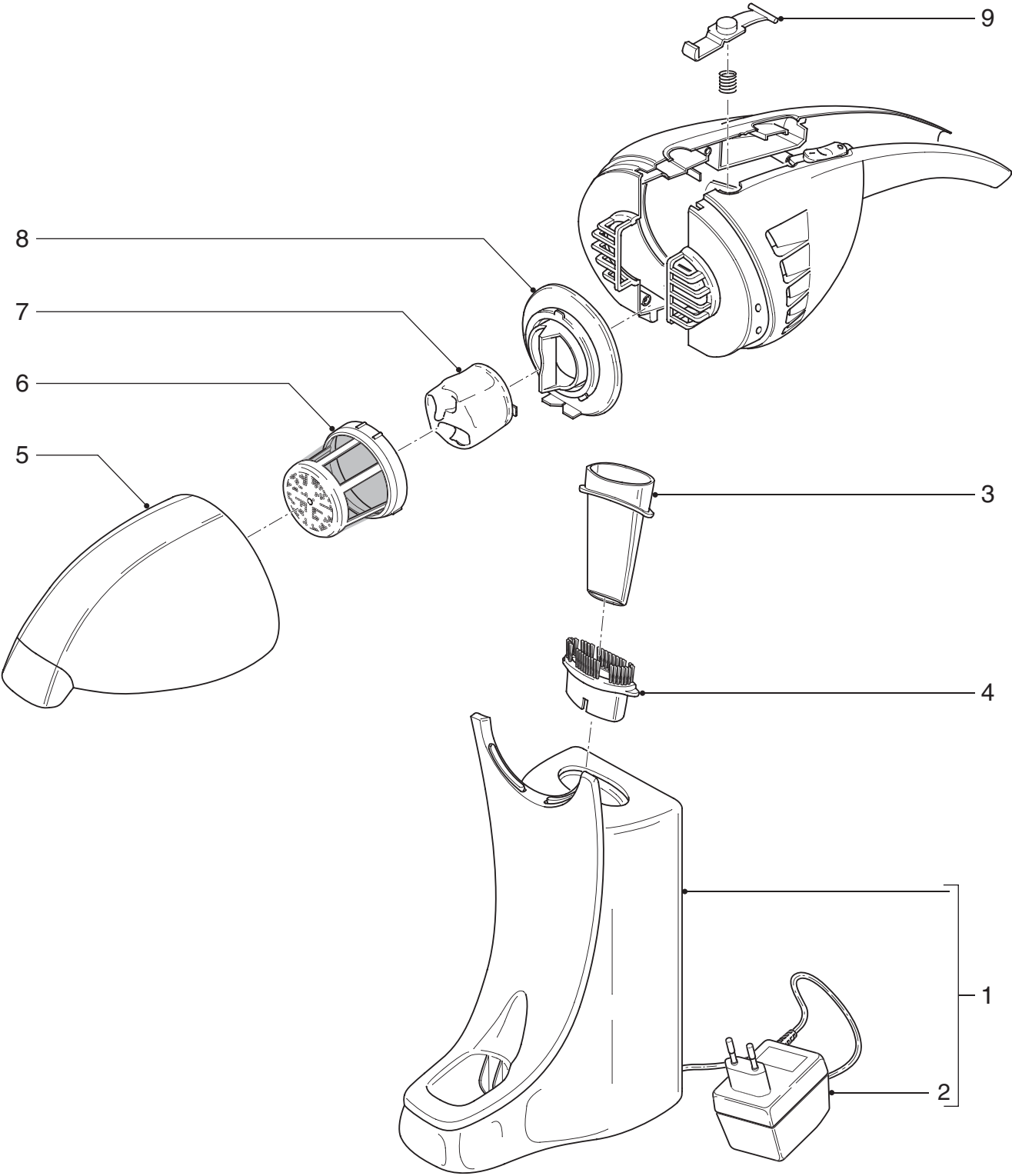
- No specific issues

ASSEMBLY & DISASSEMBLY ADVICE

- No specific issues

OPTIONAL (accessories)

- No specific issues



Pos	Service code	Description
1	not available	Charging unit
2	9965 000 06425	Adapter EU
	9965 000 06426	Adapter U.K.
	9965 000 06427	Adapter Taiwan
	9965 000 06428	Adapter Korea
3	9965 000 23215	Crevice nozzle

Pos	Service code	Description
4	9965 000 23216	Brush nozzle
5	not available	Dust compartment
6	9965 000 23217	Outer filter
7	8838 035 01010	Inner filter
8	9965 000 23218	Filter holder
9	9965 000 23219	Dust comp. release knob