

Service Service Service



Philips Domestic Appliances and Personal Care

Service Manual

PRODUCT INFORMATION

- This product meets the requirements regarding interference suppression on radio and TV.
- After the product has been repaired, it should function properly and has to meet the safety requirements as officially laid down at this moment.

TECHNICAL INFORMATION

- Adapter AC / DC : 230 V / 21V DC - 250 mA
- Rechargeable batteries : 12 x NiCd - 1700 mAh
- Run time : 9.0 min.
- Charging time : 16-18 hours
- Charge indicator : LED
- Charging base : Standing, also wall mountable, incl. accessory storage
- Air flow system : Cyclonic action
- Accessories : Telescopic stick, Floor nozzle, crevice and brush
- Application environment : Dry
- Filter : 2-stage type, washable
- Dust capacity : 450 ml

Charge/Discharge indication

- Charging : Blue LED lights up during charging
- Battery Low : Blue LED blinks fast during discharge after battery pack voltage drops below $11.4 \text{ V} \pm 0.2 \text{ V}$

REPAIR INSTRUCTIONS

- No specific issues

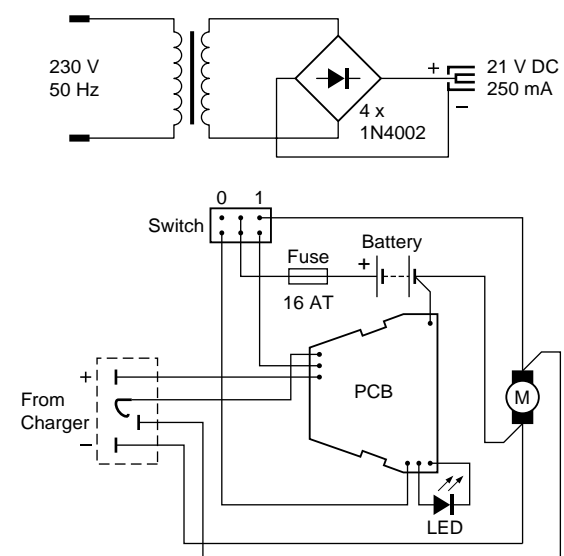
ASSEMBLY & DISASSEMBLY ADVICE

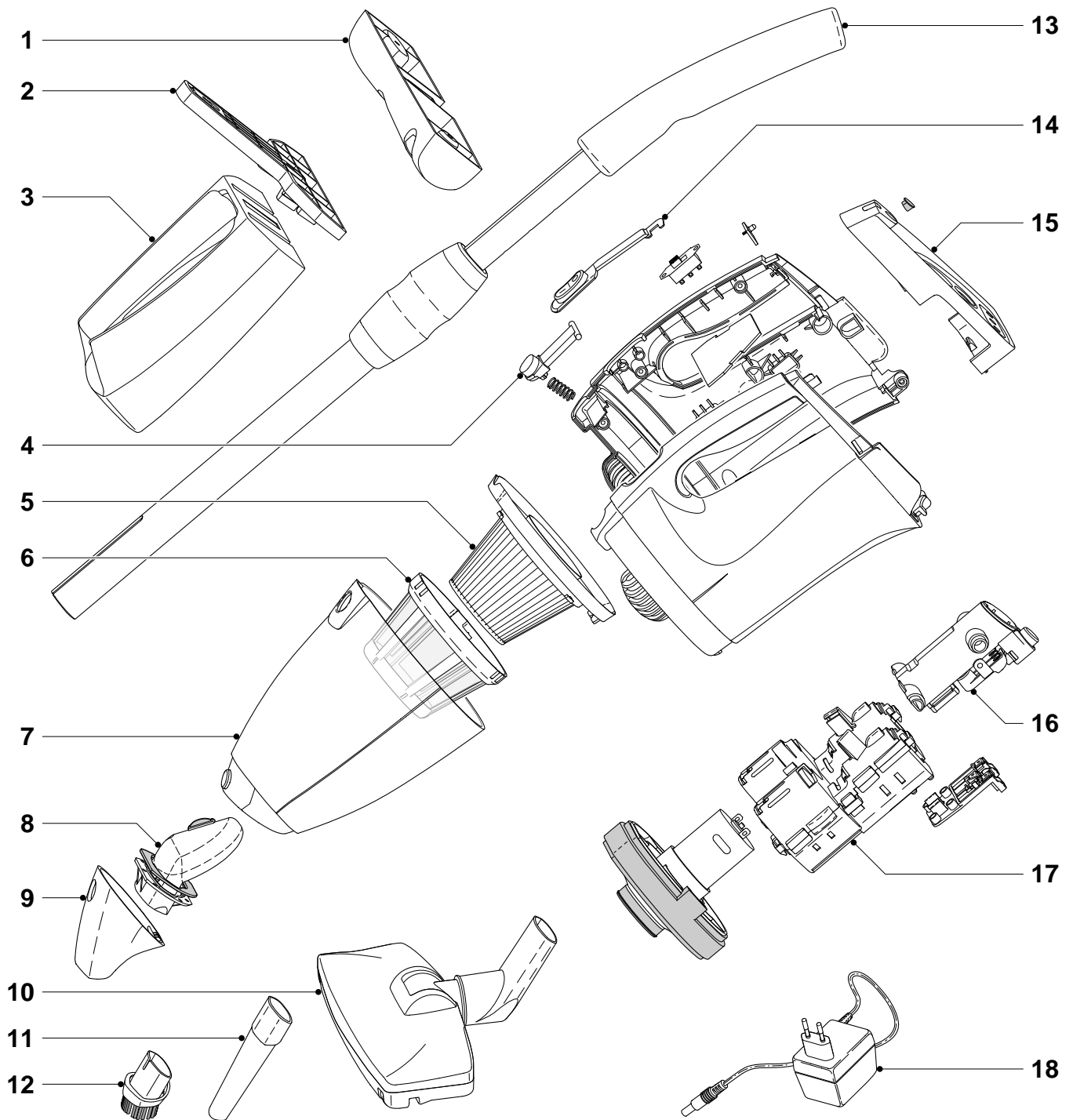
- To remove the back plate assy, first remove the rubber screw hole cover and the screw in the back plate.
- To open the cleaner, first remove the 6 screws and then gently open it up by using a screwdriver between both body sides at the front of the cleaner to unsnap both parts from each other.

OPTIONAL (accessories)

- No specific issues

Electrical diagram





Pos	Service code	Description
1	9965 000 36286	Comp holder
2	9965 000 36287	Wall mount
3	9965 000 36288	Charging base assy
4	9965 000 36289	Nozzle release button
5	9965 000 36262	Inner filter assy
6	9965 000 36263	Mesh filter assy
7	9965 000 36290	Dust case assy
8	9965 000 36293	Stream control assy
9	9965 000 36291	Nose piece
10	9965 000 36294	Floor nozzle assy
11	9965 000 36295	Crevice tool

Pos	Service code	Description
12	9965 000 36296	Small brush
13	9965 000 36297	Handle assy
14	9965 000 36298	Switch cover
15	9965 000 36292	Back plate assy
16	9965 000 36299	Handle hold tube assy
17	9965 000 36300	Battery pack 14.4 V
18	9965 000 36285	Charger WE
	9965 000 41650	Charger UK/Hongkong
	9965 000 41651	Charger Korea
	9965 000 41652	Charger Taiwan
	9965 000 41649	Charger PRC