

Service  
Service  
Service



Philips Domestic Appliances and Personal Care

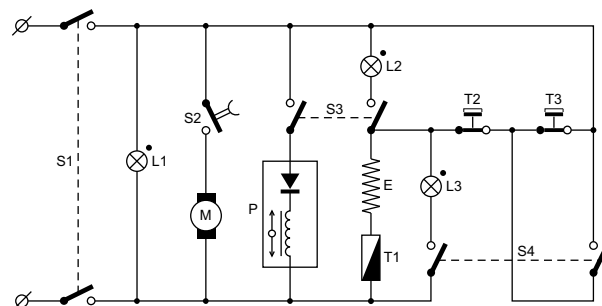
# Service Manual

## PRODUCT INFORMATION

- This product meets the requirements regarding interference suppression on radio and TV.
- After the product has been repaired, it should function properly and has to meet the safety requirements as officially laid down at this moment.

## TECHNICAL INFORMATION

- Voltage : 220 - 230 V
- Frequency : 50 Hz
- Power consumption : 1300 W
- Colour setting : Black
- Sap coding : HL3844



### Circuit Diagram

S1 : Main switch (33) on. Red lamp (33) L1 will go on.

S2 : Coffeemill switch (41).

S3 : Pump switch for making coffee (34).

S4 : Switch for making steam (35).

L1 : Signal lamp (33) will light up when mains switch is activated.

L2 : Signal lamp (34) will light up when making espresso coffee.

L3 : Signal lamp (25) will light up when making steam.

T1 : Fuse (23) 215 °C.

T2 : Thermostat (10) 90 °C.

T3 : Thermostat (22) 125 °C.

M : Coffeemill (9).

P : Pump for making espresso (38).

E : Element inside the boiler for the heating process (14).

Note: Figures ( ) refer to items in the exploded view drawing.

## DISASSEMBLY- AND RE-ASSEMBLY ADVISE

### Dismantling the appliance (item 43 + 47)

- To dismantle the appliance the two "Torx" screws 42 have to be loosened.

The suitable "Torx" screwdriver can be ordered from Consumer Service under number 4822 395 50449.

#### Warning:

After repair, do not forget to mount the knurled rings 42, to assure a correct and save earthing.

### Detaching steam device (28) and steam knob (40)

- In these cases the cover plate (43) has to be detached, to reach the inside engineering.  
To replace the steam knob (40), moreover the retaining washer (50) has to be removed.

## REPAIR INSTRUCTION

### Descaling

- Operate the appliance twice in the same way as making Espresso, but fill the watertank with vinegar or a 10-15% solution of either vinegar-acid, citric acid or tartaric acid in cold tap water.
- To remove scale that has set in the inside of the steam pipe, let the appliance produce steam for some time.
- For persistent scale interrupt the descaling procedure once or twice after pumping and steaming hot vinegar and let the vinegar act on the scale for at least half an hour. Continue the procedure. Clean the outlet plate (item 8).
- After the descaling procedure, operate the espresso machine twice with tap water in order to rinse away any residual substances.

### OPTIONAL (accessories)

- No specific issues.

## PARTS LIST

Pos	Service code	Description
1	4822 690 10179	Mill unit item 1+3+5
2	4822 410 12065	Adjusting piece
3	4822 690 10179	Mill unit item 1+3+5
4	4822 690 10204	Regulating crusher
5	4822 690 10179	Mill unit item 1+3+5
6	4822 395 10266	Star
7	4822 690 10178	Lower mill part
8	4822 522 10552	Helical gear
9	4822 361 10862	Motor unit 220 - 230 V
10	4822 282 10289	Thermostat 90 °C 220 - 230 V
11	4822 530 10505	Tube in meters
12	4822 418 10195	Boiler part upper
13	4822 532 12535	Silicon ring
14	4822 259 10198	Element 1300 W 220 - 230 V
15	4822 532 12534	Sealing ring Ø 75 x Ø 3 mm
16	4822 418 10194	Boiler part lower
17	4822 532 12537	Sealing ring Ø 61 x Ø 5 mm
18	4822 360 10418	Combin.valve + spring
19	4822 480 10097	Sprinkler
20	4822 530 10287	Sprinkler nut
21	4822 418 10193	Bush for filter holder
22	4822 282 10288	Thermostat 125 °C 220 - 230 V
23	4822 252 11346	Fuse 215 °C 220 - 230 V
24	4822 535 10303	Steam cock unit
25	4822 532 12533	Ring Ø 10 x Ø 2 mm

Pos	Service code	Description
28	4822 530 10286	Steaming tube
28a	4822 360 10419	Steaming device compl.
29	4822 466 12059	Drip tray metal
30	4822 418 10378	Container
31	4822 535 10302	Deairing unit
32	4822 277 11819	Switch unit item 32+33+34+35
33	4822 277 11819	Switch unit item 32+33+34+35
34	4822 277 11819	Switch unit item 32+33+34+35
35	4822 277 11819	Switch unit item 32+33+34+35
36	4822 462 10759	Spout
38	4822 360 10258	Pump 220 - 230 V
39	4822 402 11173	Pump supp. + fixing part
40	4822 410 10529	Selector knob
41	4822 276 14019	Switch for coffeemill
44	4822 480 10234	Water filter
45	4822 418 10379	Water container
46	4822 480 10099	Filter
48	4822 480 10101	Filterholder + filter
49	4822 530 10299	Set of small rings
50	4822 492 11165	Spring
51	4822 410 12222	Knob
52	4822 522 10745	Wormwheel drive
53	4822 404 10988	Support
54	4822 532 13135	Creamer ring
55	9965 000 33391	Tray
56	9965 000 33392	Metal ring

