

Service  
Service  
Service



Domestic Appliances and Personal Care

# Service Manual

SAP Coding HQ 302

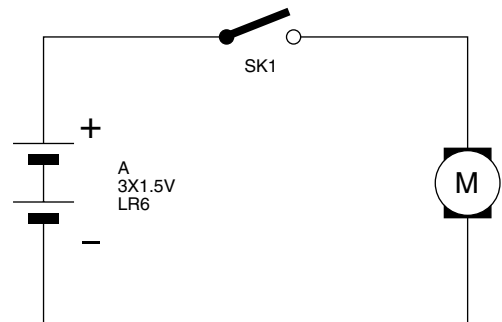
## HINTS FOR REPAIRS

### DISASSEMBLY

- Remove the shaving unit, to prevent damages during repairs.
- Remove the batterieholder.
- Unlock the snaplocks from the tailpart.
- Lift the motor unit out of the housing.
- Loosen the motor clamp springs on the bearing block of the motor with a small screwdriver.
- Unlock the peg-clamping 'Z' (2X) between frame (item 8) and hair chamber (item 5).
- To remove the trimmer, first disassemble the trimmer slide by pushing down the locking pegs 'V' (2X) and move slide slightly outwards.
- Make room between trimmer and cover with a small screwdriver, to release the peg fastening 'Y'.

### ASSEMBLY

- The assembly must be carried out in the reverse order of what is described under Disassembly.
- When fitting the shaver it must be checked if wiring is correctly positioned.



## TECHNICAL DATA

Operating voltage	: 4.5V $\equiv$
Power supply	: 3X AA/LR6 battery
Shaving heads	: 2X HQ3
Comfort control	: fixed setting
Trimmer	: pop-up system

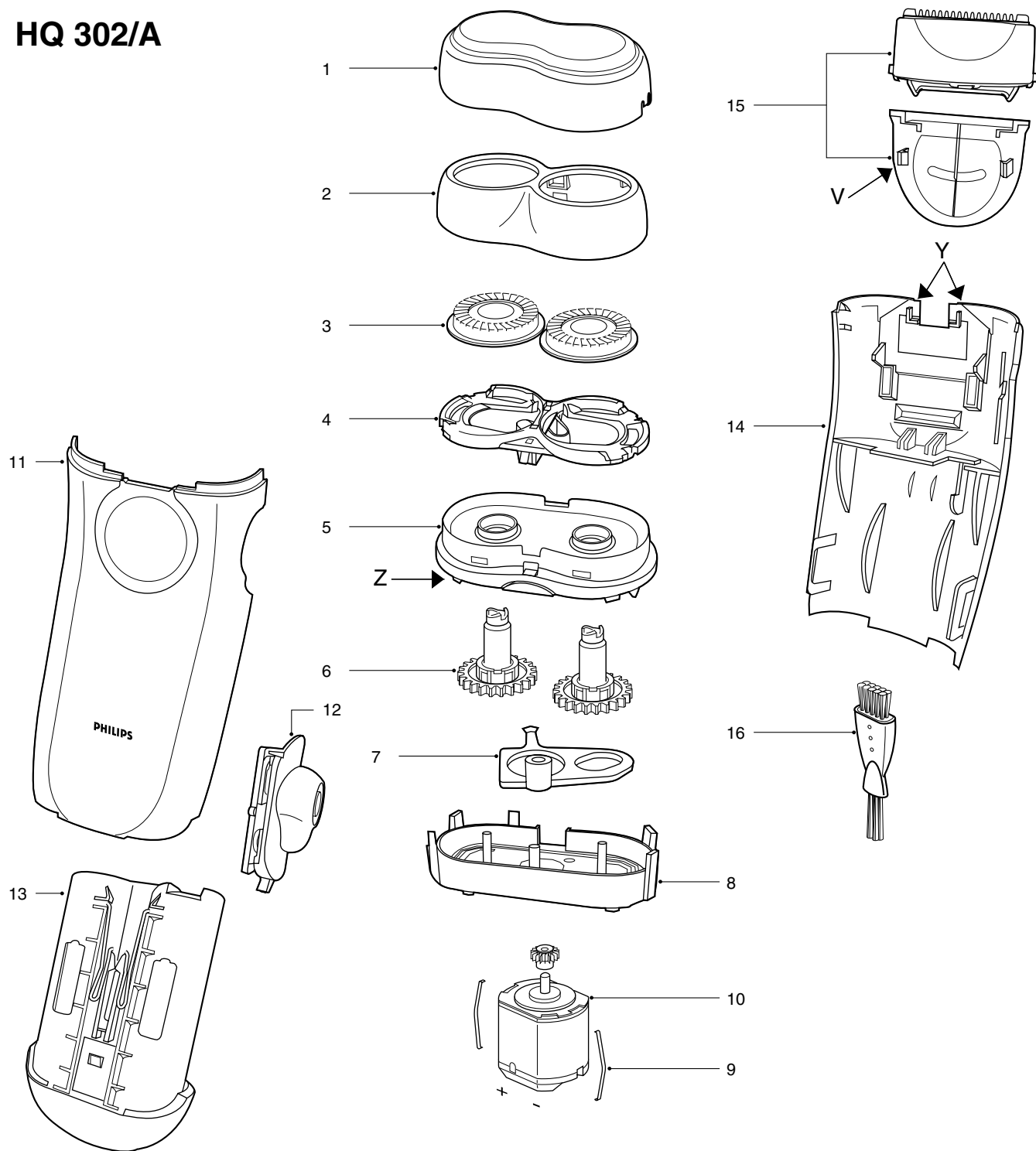
PRODUCTS MEETS THE REQUIREMENTS REGARDING INTERFERENCE SUPPRESSION ON RADIO AND TELEVISION.

- AFTER THE PRODUCT HAS BEEN REPAIRED IT SHOULD FUNCTION PROPERLY AND HAS TO MEET THE SAFETY REQUIREMENTS AS LAID DOWN OFFICIALLY ESTABLISHED AT THIS MOMENT.



PHILIPS

# HQ 302/A



1	4222 036 01330	Protection cap	11	4222 036 01930	Housing assy
2	4222 036 01340	Holder assy	12	4222 036 01810	On/off knob
3	4222 036 01350	Shaving head double action	13	4222 036 01900	Battery holder assy
4	4222 030 48110	Shaving head bracket	14	4222 036 01830	Tailpart
5	4222 036 01360	Hairchamber assy	15	4222 036 01390	Trimmer assy
6	4222 036 01790	Gear assy	16	4222 036 01250	Cleaning brush
7	4222 036 01380	Lever	***	4222 036 01920	DFU
8	4222 036 01420	Frame			
9	4822 492 63165	Spring			
10	4222 036 01800	Motor assy			