

Service
Service
Service



Domestic Appliances and Personal Care

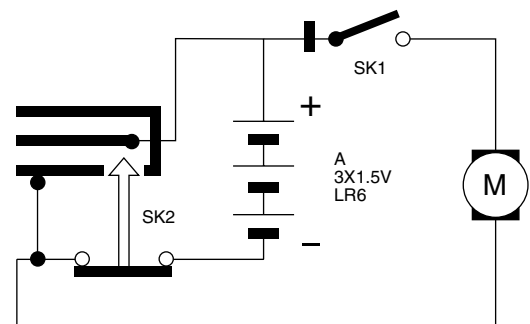
Service Manual

SAP Coding HQ 320

HINTS FOR REPAIRS

DISASSEMBLY

- Remove the shaving unit, to prevent damages during repairs.
- Remove the batterieholder.
- Unlock the snaplocks from the tailpart.
- Lift the motor unit out of the housing.
- Loosen the motor clamp springs on the bearing block of the motor with a small screwdriver.
- Unlock the peg-clamping 'Z' (2X) between frame (item 7) and hair chamber (item 5).



ASSEMBLY

- The assembly must be carried out in the reverse order of what is discribed under Disassembly.
- When fitting the shaver it must be checked if wiring is correctly positioned.

TECHNICAL DATA

Operating voltage	: 4.5V \approx
Power supply	: 3X AA/LR6 battery external 4.5 V \approx /500mA
Shaving heads	: 2X HQ3
Comfort control	: fixed setting

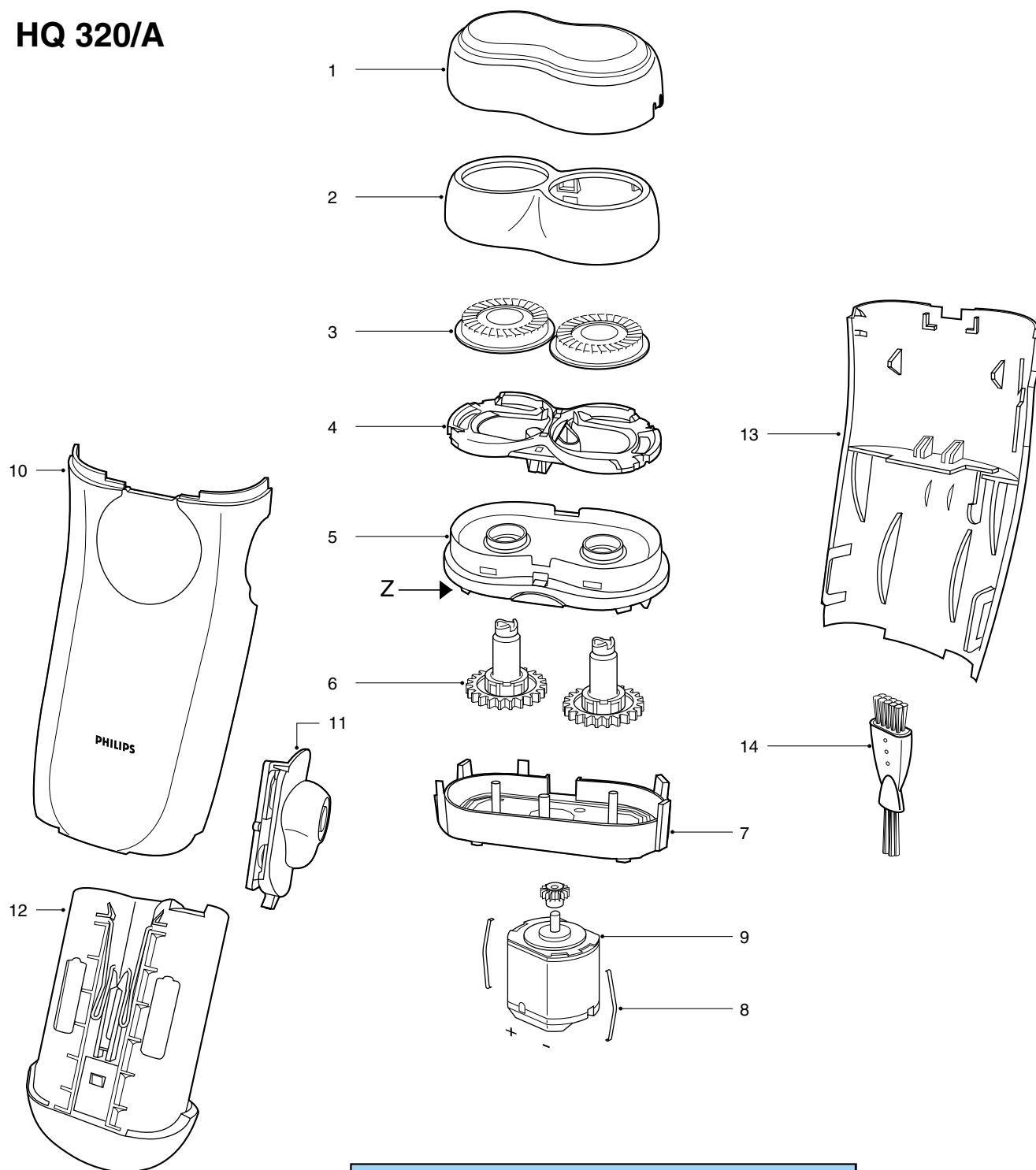
PRODUCTS MEETS THE REQUIREMENTS REGARDING INTERFERENCE SUPPRESION ON RADIO AND TELEVISION.

- AFTER THE PRODUCT HAS BEEN REPAIRED IT SHOULD FUNCTION PROPERLY AND HAS TO MEET THE SAFETY REQUIREMENTS AS LAID DOWN OFFICIALLY ESTABLISHED AT THIS MOMENT.



PHILIPS

HQ 320/A



1	4222 036 01330	Protection cap
2	4222 036 01340	Holder assy
3	4222 036 01350	Shaving head double action
4	4222 030 48110	Shaving head bracket
5	4222 036 01550	Hairchamber assy
6	4222 036 01790	Gear assy
7	4222 036 01420	Frame
8	4822 492 63165	Spring
9	4222 036 01800	Motor assy
10	4222 036 01860	Housing assy
11	4222 036 01810	On/off knob
12	4222 036 01870	Battery holder assy
13	4222 036 01880	Tailpart
14	4222 036 01250	Cleaning brush
***	4222 036 01840	DFU