

Service
Service
Service



Domestic Appliances and Personal Care

Service Manual

SAP Coding HQ 342

GENERAL

The functions of the SMPS-unit (Switched Mode Power Supply) are the following:

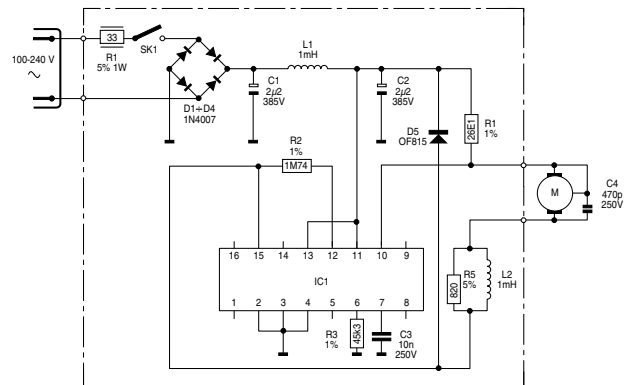
- Changes the connected mains voltage into a DC voltage for the supply of the motor through a switching transistor (incorporated in IC1).
- Controls the average supply voltage of the motor so that the rpm remains constant with a heavier load (e.g. due to heavy beard or polluted shaving heads).
- When the motor is blocked, it limits the current flowing through the motor.
- Prevent the SMPS-unit from being damaged in case of a short circuit.

HINTS FOR REPAIRS

- Remove the shaving unit, to prevent damages during repairs.
- Remove screw A (1x).
- Put the shaver on the table and remove the tailpart (item 15) from the shaver.
- Detach the motor clamping springs (item 11) on the bearing block with a small screwdriver.
- Unlock peg clamping 'Z' (2x) between frame (item 18) and hair chamber (item 10).
- To remove the trimmer, first disassemble the trimmer slide by pushing the locking pegs (2x 'X').
- Make room between trimmer and cover ("Y") with a small screwdriver and take the trimmer out.
- The assembly must be carried out in reverse order.

PRODUCTS MEETS THE REQUIREMENTS REGARDING INTERFERENCE SUPPRESSION ON RADIO AND TELEVISION.

- AFTER THE PRODUCT HAS BEEN REPAIRED IT SHOULD FUNCTION PROPERLY AND HAS TO MEET THE SAFETY REQUIREMENTS AS LAID DOWN OFFICIALLY ESTABLISHED AT THIS MOMENT.



TECHNICAL DATA

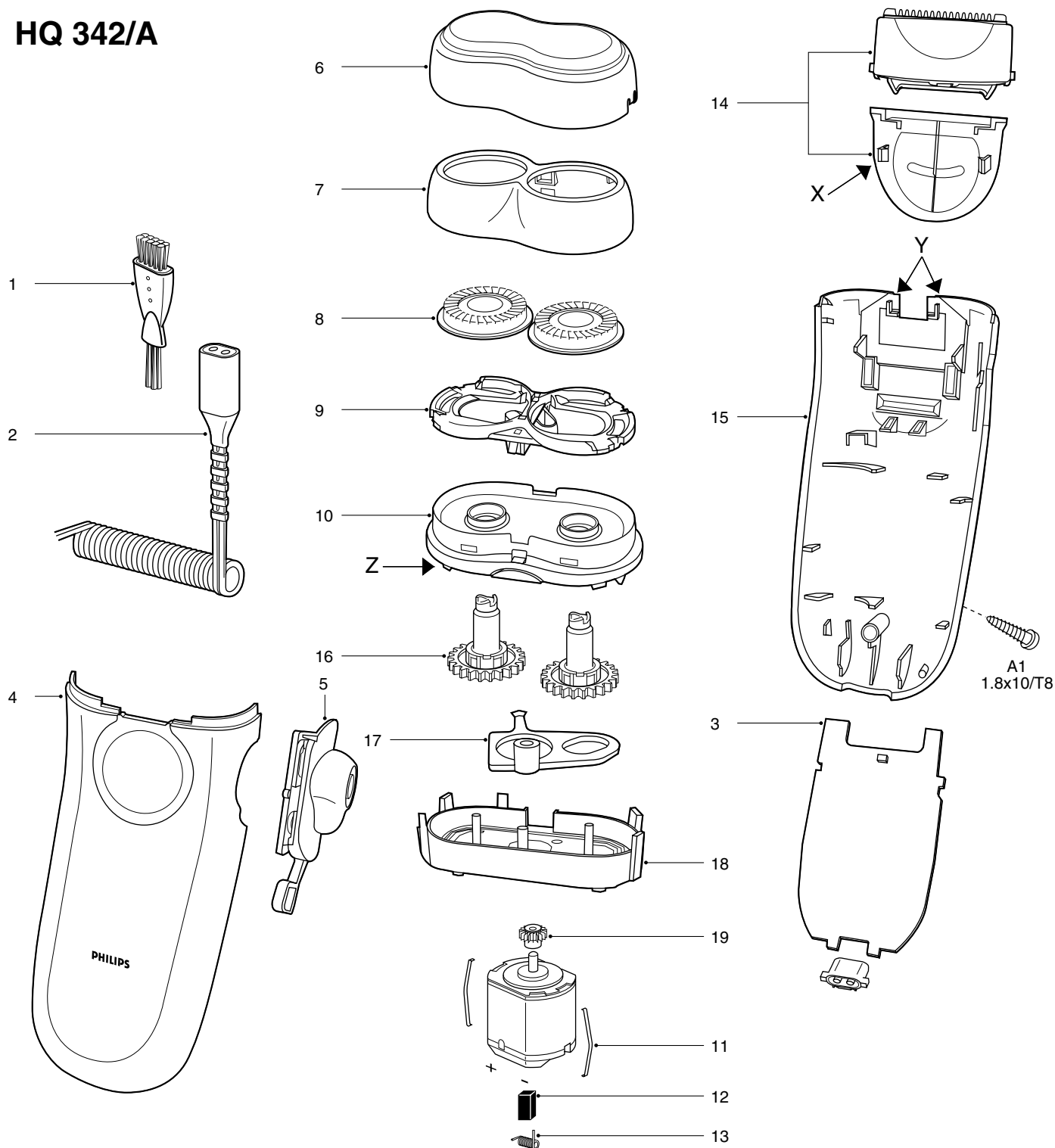
Voltage	: 100-240V, 50/50 Hz
Power consumption	: Motor depending
Motor voltage	: 54 V ~
Power supply	: SMPS
Speed of cutters	: >2100 r.p.m.
Shaving heads	: 2xHQ3
Comfort control	: fixed setting
Screwdriver	: 4822 395 50263
Trimmer	: pop-up system

CAUTION!
WHILE CHECKING THE P.C.-BOARD
REMEMBER THAT MOST COMPONENTS
AND MOTOR ARE ENERGIZED BY
MAINS VOLTAGE.



PHILIPS

HQ 342/A



1	4222 036 01250	Cleaning brush	EU GB ARG USA	10	4222 036 01360	Hairchamber assy	
2	4822 321 10095	Flex assy		11	4822 492 63165	Spring	
	4822 321 10096	Flex assy		12	4222 362 40181	Carbon brush	
	4222 036 01590	Flex assy		13	4822 492 62703	Contact spring	
	4222 036 01490	Flex assy		14	4222 036 01390	Trimmer assy	
	4222 036 01500	Flex assy	AU/NZ Tinsel	15	4222 036 01730	Tailpart	
	4222 036 01260	Flex assy		16	4222 036 01370	Gear assy	
3	4222 030 48150	Power supply	Norelco	17	4222 036 01380	Lever	
4	4222 036 01700	Housing assy		18	4222 036 01420	Frame	
	4222 036 01710	Housing assy		19	4222 036 01690	Motor assy	
5	4222 036 01720	On/off knob		20	4222 036 01740	DFU	PRC
6	4222 036 01330	Protection cap		21	4222 036 01750	DFU	W-EUR
7	4222 036 01340	Holder assy		22	4222 036 01760	DFU	E-EUR
8	4222 036 01350	Shaving head double action		23	4222 036 01770	DFU	Norelco
9	4222 030 48110	Shaving head bracket		24	4222 036 01780	DFU	ROW/JAP