

Service
Service
Service



Domestic Appliances and Personal Care

Service Manual

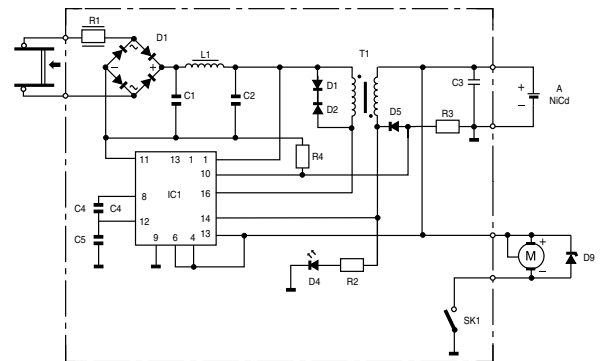
SAP Coding HQ 380

TECHNICAL DESCRIPTION

The HQ380 shaver can be recharged in 8 hours by means of a 'Switched Mode Power Supply'. The heart of the power supply consists of IC1, incorporating the following functions:

- a current controller to adjust the charge current,
- a primary current limiter to protect the transformer from saturation.
- a frequency limiter.
- an open cell protection.
- a chip temperature protection.

The green LED only illuminates when the shaver is connected to the mains.



HINTS FOR REPAIRS

- Remove the shaving unit, to prevent damages during repairs.
- Remove screw A (1x).
- Put the shaver on the table and remove the tailpart (item 14) from the shaver. Lift the PCB with motor out of the housing.
- Loosen the motor clamping springs (item 17) on the bearing block with a small screwdriver.
- Unlock peg clamping 'Z' (2x) between frame (item 15) and hair chamber (item 12).

TECHNICAL DATA

Voltage	: 100-240V, 50/50 Hz
	via slide pins
Motor voltage	: 1.2 V _{DC}
Cell	: Nicd AA
Cell capacity	: approx. 700 mAh
Charging system	: SMPS
Charge indicator	: green LED
Charging time	: approx. 8H
Charging current	: approx. 100 mA
Shaving heads	: 2xHQ3
Comfort control	: fixed setting

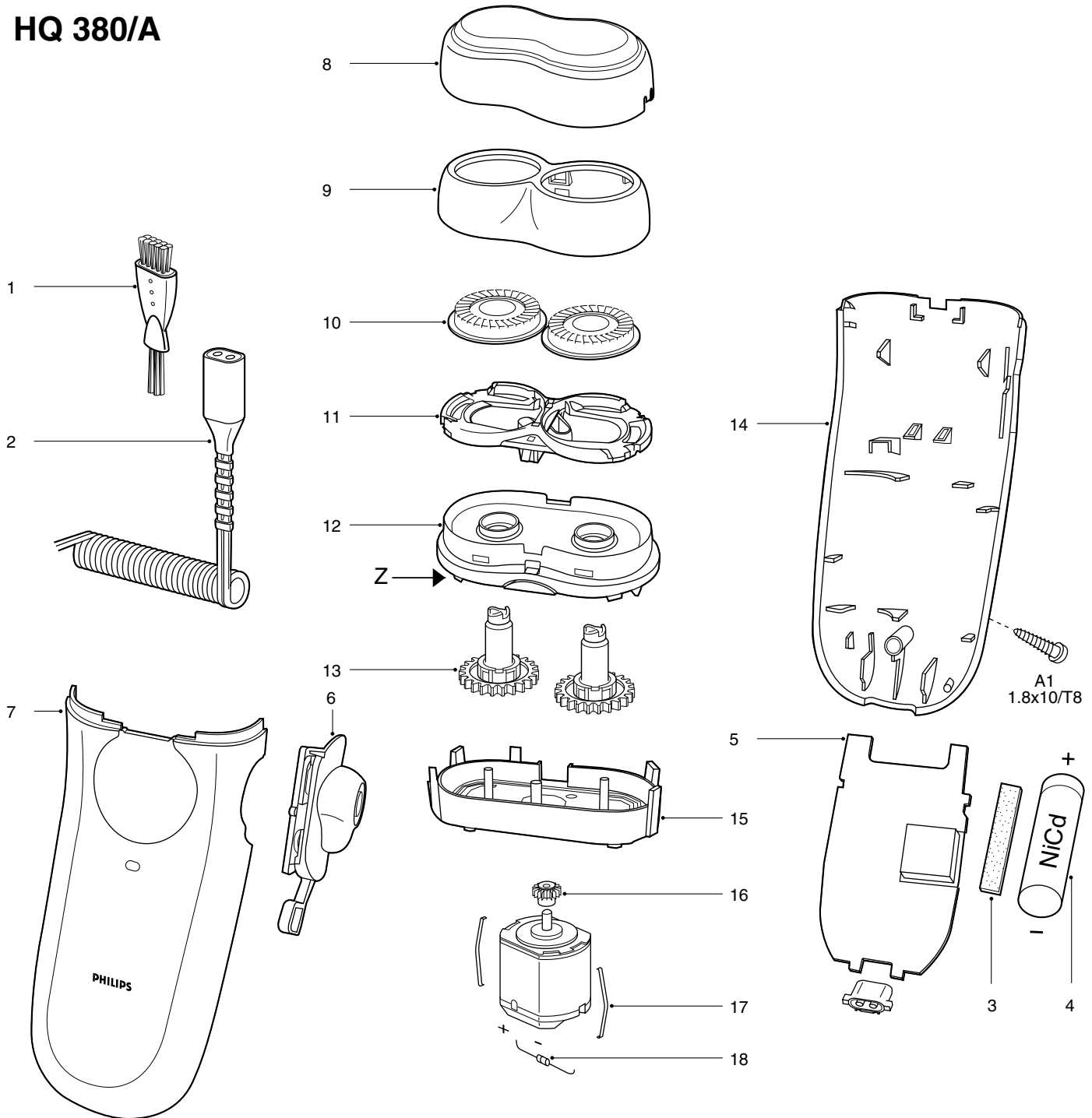
PRODUCTS MEETS THE REQUIREMENTS REGARDING INTERFERENCE SUPPRESSION ON RADIO AND TELEVISION.

- AFTER THE PRODUCT HAS BEEN REPAIRED IT SHOULD FUNCTION PROPERLY AND HAS TO MEET THE SAFETY REQUIREMENTS AS LAID DOWN OFFICIALLY ESTABLISHED AT THIS MOMENT.



PHILIPS

HQ 380/A



1	4222 036 01250	Cleaning brush	KR Tinsel	10	4222 036 01350	Shaving head double action	PRC
2	4222 036 01600	Flex assy		11	4222 030 48110	Shaving head bracket	
3	4222 036 01260	Flex assy		12	4222 036 01550	Hairchamber assy	
4	4222 036 01280	Foam plate		13	4222 036 01560	Gear assy	
5	4222 036 01290	Battery 1N-600AA		14	4222 036 01570	Tailpart	
5	4222 030 48120	Power modul		15	4222 036 01420	Frame	ROW
6	4222 036 01300	On/off knob		16	4222 036 01430	Motor assy	
7	4222 036 01540	Housing assy		17	4822 492 63165	Spring	
8	4222 036 01330	Protection cap		18	4222 036 01580	Zener diode	
9	4222 036 01340	Holder assy		***	4222 036 01470	DFU	
					4222 036 01440	DFU	