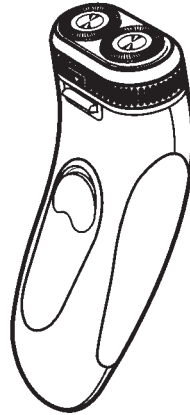


Service  
Service  
Service

HQ 483/A NiMH  
HQ 483/B NiCd



Domestic Appliances and Personal Care

# Service Manual

## GENERAL

The HQ483 shaver can be recharged in 1 hour by means of a 'Fly Back Self Oscillating Power supply'.

This electronic circuit enables the cell to be charged at 100-240 V, 50/60 Hz.

It is possible to have a shave directly from the mains.

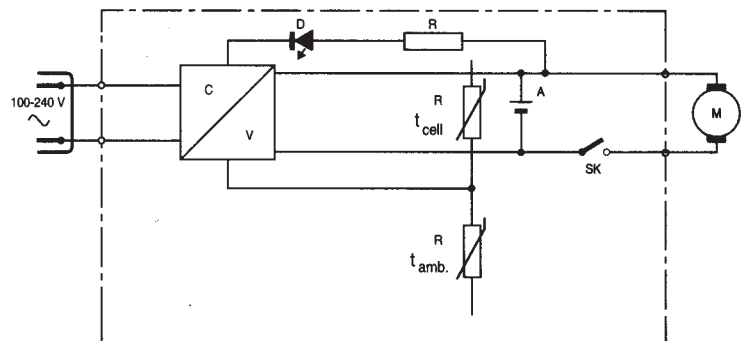
The green LED only illuminates when the shaver is connected to the mains.

The electronic circuit incorporates the following functions and controls:

- a 1200 mA Quick Charge supply.
- a 35 mA Trickle Charge supply.
- a 1.25 V / 2.1 A Dynamic supply when shaving from the mains.
- an open cell protection ( $V_{bat} > 1.8V$ ).
- a temperature protection of the cell.  
(if  $T_{cell} - T_{amb} > 7^{\circ}C$ , charging will switch-over from Quick Charge to Trickle Charge).

## HINTS FOR REPAIRS

- Remove the shaving unit, to prevent damages during repairs.
- While assembling the shaver the sides panels (item 17) have to be removed.  
The side panels must be snapped into the body last.



## TECHNICAL DATA

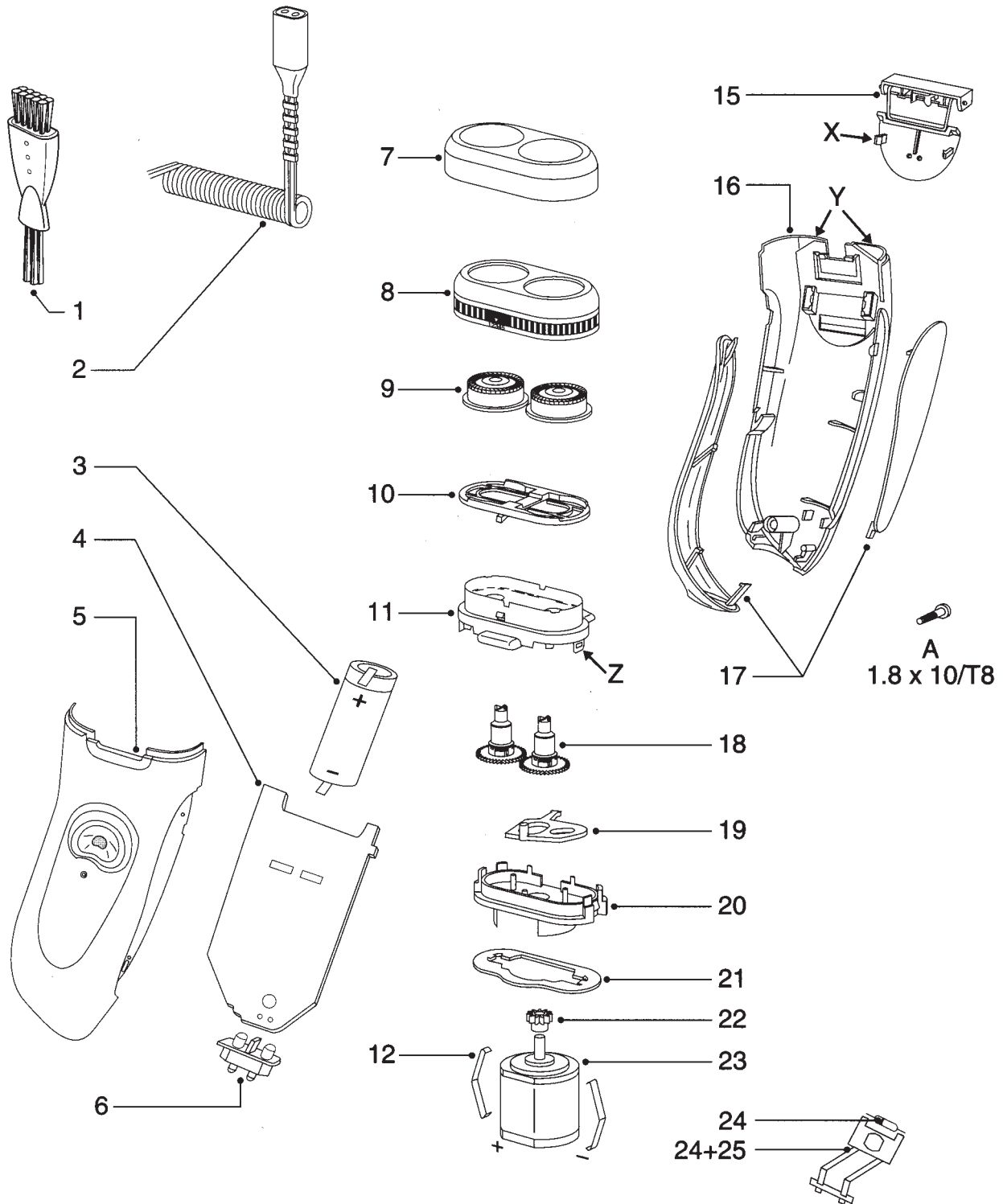
|                  |  |
|------------------|--|
| Input voltage    | : 100 - 240 V, 50/60 Hz                        |
| Motor voltage    | : 1.2 V $\dots$                                |
| Cell             | : 1x AA NiMH or NiCd                           |
| Cell capacity    | : approx. 1000 mAh                             |
| Charging system  | : SOPS   |
| Charge indicator | : 1x green LED                                 |
| Charging time    | : approx 1H                                    |
| Charging current | : 1200 mA Quick Charge<br>35 mA Trickle Charge |
| Shaving heads    | : HQ4 - 4822 690 30468                         |
| Comfort control  | : 5 settings                                   |
| Screwdriver      | : 4822 395 50263                               |

## MSH CODING

8851 483 00000 HQ 483



# HQ 483/A NiMH HQ 483/B NiCd



1 4822 479 20198 cleaning brush  
2 4822 321 10095 flex EU  
4822 321 10096 flex GB  
4822 321 10148 flex AUS/NZ  
4822 321 10344 flex USA/CDN

3 4822 138 10584 NiMH cell AA  
4822 138 10633 NiCd cell AA  
4 4822 214 12213 power supply NiMH  
4822 214 12214 power supply NiCd  
5 4822 441 11958 housing PH

6 4822 268 10348 inlet  
7 4822 462 10905 protecting cap  
8 4822 441 11957 adj. head housing  
9 4822 690 30468 HQ4 shaving head  
10 4822 256 10352 head holder

11 4822 442 00855 cover/hairseal  
12 4822 492 63165 motor clamp  
15 4822 690 10112 trimmer  
16 4822 442 00856 cover  
17 4822 441 11955 side panels

18 4822 522 33551 gearwheel  
19 4822 404 40647 lever  
20 4822 441 11526 frame  
21 4822 466 11391 sealing plate  
22 4822 522 33547 pinion

23 4822 361 21752 motor 1.2V  
24 4822 130 32173 OF217 diode  
25 4822 265 10924 connector

A 4822 502 30526 s.t. screw 1.8x10/T8