



Philips Domestic Appliances and Personal Care

# Service Manual

## PRODUCT INFORMATION

- This product meets the requirements regarding interference suppression on radio and TV.
- After the product has been repaired, it should function properly and has to meet the safety requirements as officially laid down at this moment.

## TECHNICAL INFORMATION

- Voltage : 100-240 V 50/60 Hz
- Power consumption : Motor depending
- Motor voltage : 54 V
- Power system : Mains
- Shaving heads : HQ4+ - 4222 036 05450
- SAP coding : HQ5413

## DISASSEMBLY- AND RE-ASSEMBLY ADVISE

- Remove shaving unit, to prevent damages during repairs.
- Remove the screws A1 (2 x).
- Remove cover. (see Fig. 1)
- To remove the trimmer, first disassemble the trimmer slide by pushing down the locking pegs (2 x "X" in exploded view) and move the slide slightly outwards.
- Make room between trimmer and cover with a small screwdriver ("Y" in exploded view).
- Remove screws B1 (2 x).
- The PC-board with motor and hairchamber can now be removed from the housing.
- Detach the motor clamping springs (item 16) on the bearing block with a small screwdriver.

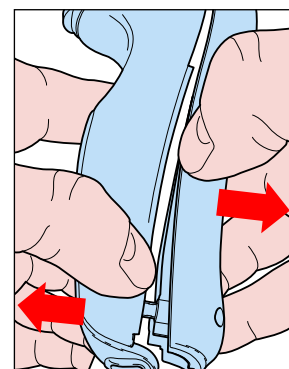


Fig. 1

## REPAIR INSTRUCTION

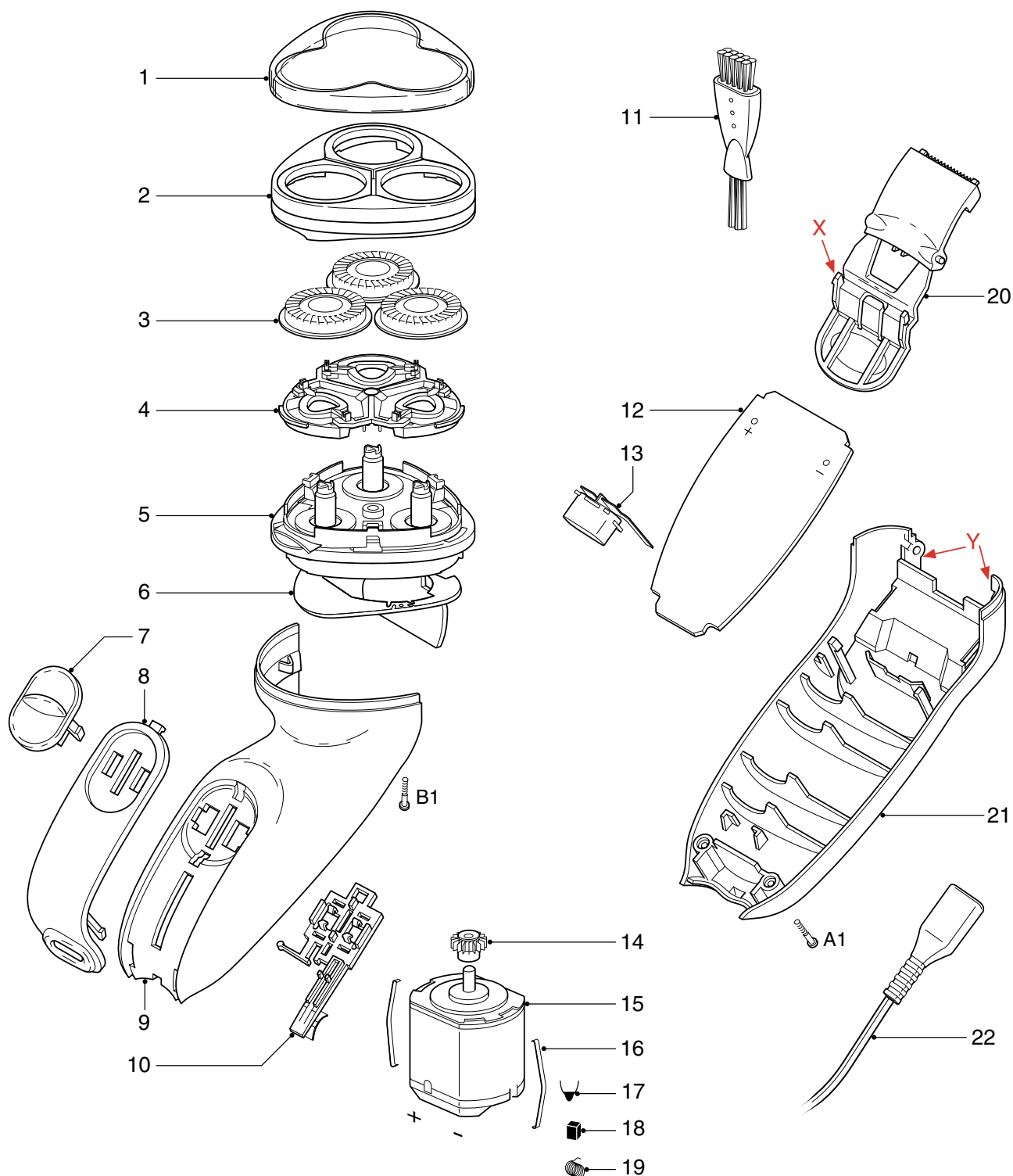
- No specific issues

## OPTIONAL (accessories)

- No specific issues

## EXPLODED VIEW &amp; PARTS LIST

HQ5413



| Pos | Service code   | Description           |
|-----|----------------|-----------------------|
| 1   | 4222 036 05430 | protecting cap        |
| 2   | 4222 036 09400 | bracket               |
| 3   | 4222 036 05450 | HQ4+ shaving head     |
| 4   | 4222 036 05460 | holder assy           |
| 5   | 4222 036 05450 | hair chamber complete |
| 6   | 4822 466 10937 | dust seal             |
| 7   | 4222 036 09410 | on/off knob           |
| 8   | 4222 036 05590 | panel EUR             |
| 9   | 4222 036 09430 | housing               |
| 10  | 4222 036 05510 | on/off slide assy     |
| 11  | 4822 479 30183 | cleaning brush        |
| 12  | 4222 036 05540 | printed circuit board |

| Pos | Service code   | Description          |
|-----|----------------|----------------------|
| 13  | 4222 036 05550 | inlet                |
| 14  | 4822 522 33605 | pinion               |
| 15  | 4822 361 30455 | motor assy           |
| 16  | 4822 492 71735 | motor spring         |
| 17  | 4222 036 05520 | capacitor Y5P 470 pF |
| 18  | 4822 362 40181 | carbon brush         |
| 19  | 4822 492 62703 | spring               |
| 20  | 4822 690 10218 | trimmer assy         |
| 21  | 4222 036 09440 | cover                |
| 22  | 4822 321 10095 | flex assy EUR        |
|     | 4822 502 30526 | screw (torx-slot)    |
|     | 4222 036 05570 | pouch EUR            |