

Service  
Service  
Service



Philips Consumer Lifestyle

# Service Manual

## PRODUCT INFORMATION

- This product meets the requirements regarding interference suppression on radio and TV.
- After the product has been repaired, it should function properly and has to meet the safety requirements as officially laid down at this moment.

## TECHNICAL INFORMATION

- Operating Voltage : 1,2 Volt
- Power supply : Rechargeable
- Shaving heads : 2 x HQ53
- SAP coding : HQ586

## DISASSEMBLY- AND RE-ASSEMBLY ADVISE

### Disassembly:

- Remove the shaving unit, to prevent damages during repairs
- Remove screws (item 19) (4x)
- Remove top cover
- Remove power supplier/detach connection pins (item 17) with a small screwdriver
- Set the trimmer coupling piece in the upright position (see figure 1)

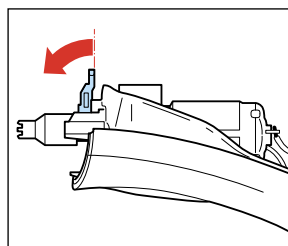


figure 1

- Unlock the peg clamping from the driving unit. (see figure 2) (A)
- Remove driving unit out of the housing (see figure 2) (B)
- Open the driving unit
- Remove pinion
- Remove screws (item 21) (2x) for disconnecting motor from frame
- To remove the trimmer out of the cover, open the trimmer, press outside cover together and take trimmer out of the cover.

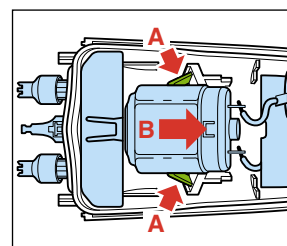


figure 2

### Assembly:

- The assembly must be carried out in the reverse order of what is described under disassembly
- When fitting the shaver it must be checked if wiring is correctly positioned

## REPAIR INSTRUCTION

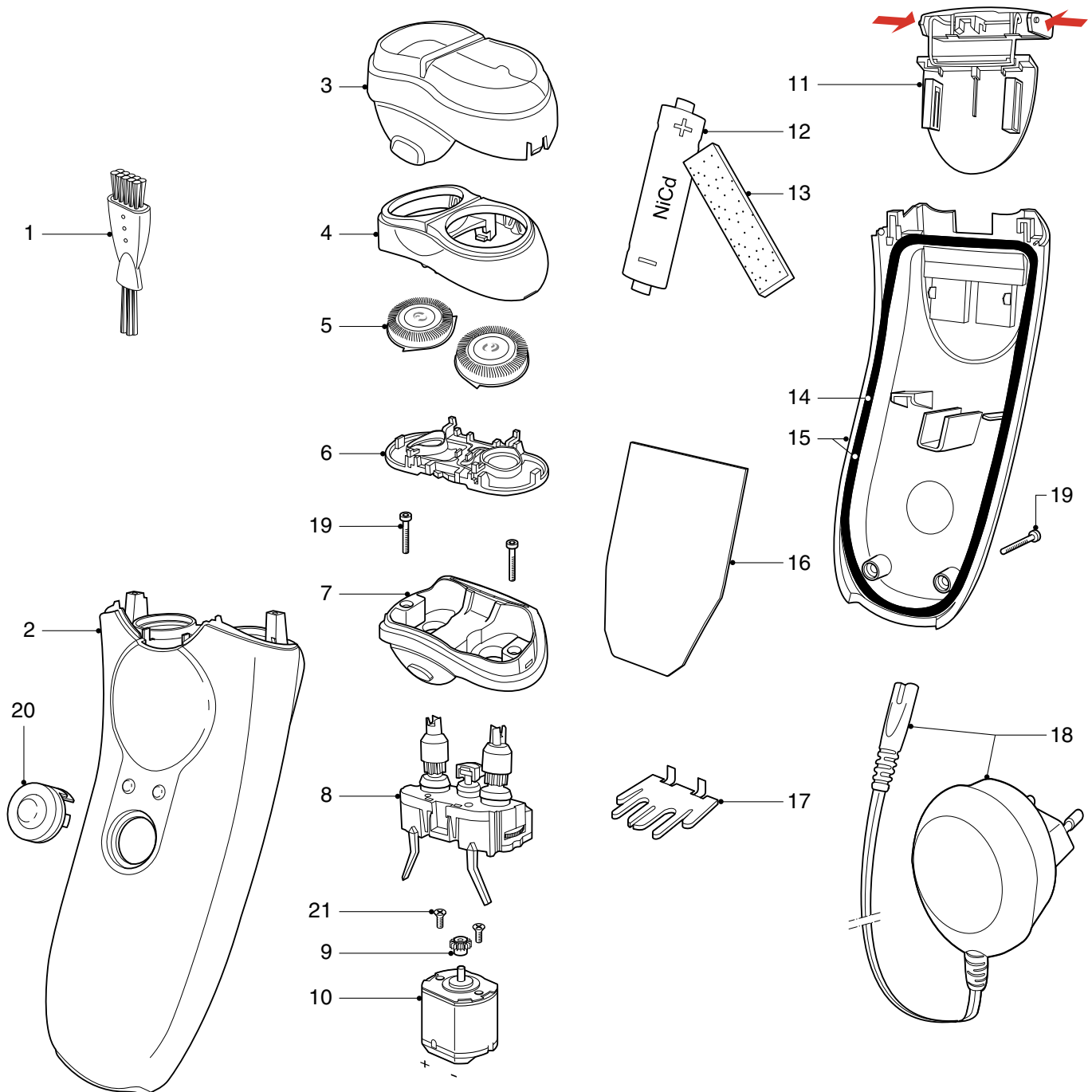
- No specific issues

## OPTIONAL (accessories)

- No specific issues

## PARTS LIST & EXPLODED VIEW

# HQ586



Pos	Service code	Description
1	4822 479 30183	cleaning brush
2	4222 036 08080	housing
	4222 036 12840	housing assy Icy Blue
3	4222 036 07830	protecting cap
4	4222 036 07840	bracket
5	4222 036 10360	HQ53 shaving heads
6	4222 036 07860	head holder assy
7	4222 036 07870	hairchamber assy
8	4222 036 07880	driving unit
9	4222 036 03610	pinion
10	4222 036 07720	motor assy
11	4222 036 07890	trimmer assy
12	4822 138 10633	1AA cell NiCd
13	4222 036 07850	tape
14	4222 036 07900	seal

Pos	Service code	Description
15	4222 036 08090	cover assy
	4222 036 08100	cover assy PRC
	4222 036 10330	cover assy KOR
16	4222 036 08110	power supplier
17	4222 036 07940	contact lip
18	4222 036 06790	power plug EU
	4222 036 04040	power plug PRC
	4222 036 08930	power plug JAP
	4222 036 06800	power plug CAN/ROW
19	4822 502 14545	screw
20	4222 036 07970	switch button
21	4222 036 07390	screw (motor)
	4222 036 08130	case