



Philips Domestic Appliances and Personal Care

Service Manual

PRODUCT INFORMATION

Shaving system

- 3-dimensional contour following system
- Lift & Cut system
- Individually floating heads
- Three Super Reflex Action shavingheads HQ55
- Silent power
- Hair collecting chamber

Power system

- Mains operation
- World-wide automatic voltage selection

Features

- Travel pouch
- Pop-up trimmer

Luxe

Safety information

- This product meets the requirements regarding interference suppression on radio and TV.
- After the product has been repaired, it should function properly and has to meet the safety requirements as officially laid down at this moment.

TECHNICAL INFORMATION

- Voltage : 100-240 V AC 50-60 Hz
- Power consumption : Motor depending
- Motor Voltage : 54 V
- Power system : Mains
- Shaving heads : HQ55 - 4222 036 08370
- SAP coding : HQ6445

DISASSEMBLY- AND RE-ASSEMBLY ADVISE

- Remove shaving unit, to prevent damages during repairs.
- Remove the screws A1 (2x).
- Remove cover. (See Fig. 1)
- To remove the trimmer, first disassemble the trimmer slide by pushing down the locking pegs (2 x "X" in exploded view) and move the slide slightly outwards.
- Make room between trimmer and cover with a small screwdriver ("Y" in exploded view).
- Remove screws B1 (2 x).
- The PC-board with motor and hairchamber can now be removed from the housing.
- Detach the motor clamping springs (item 17) on the bearing block with a small screwdriver

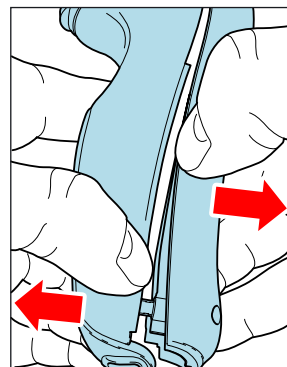


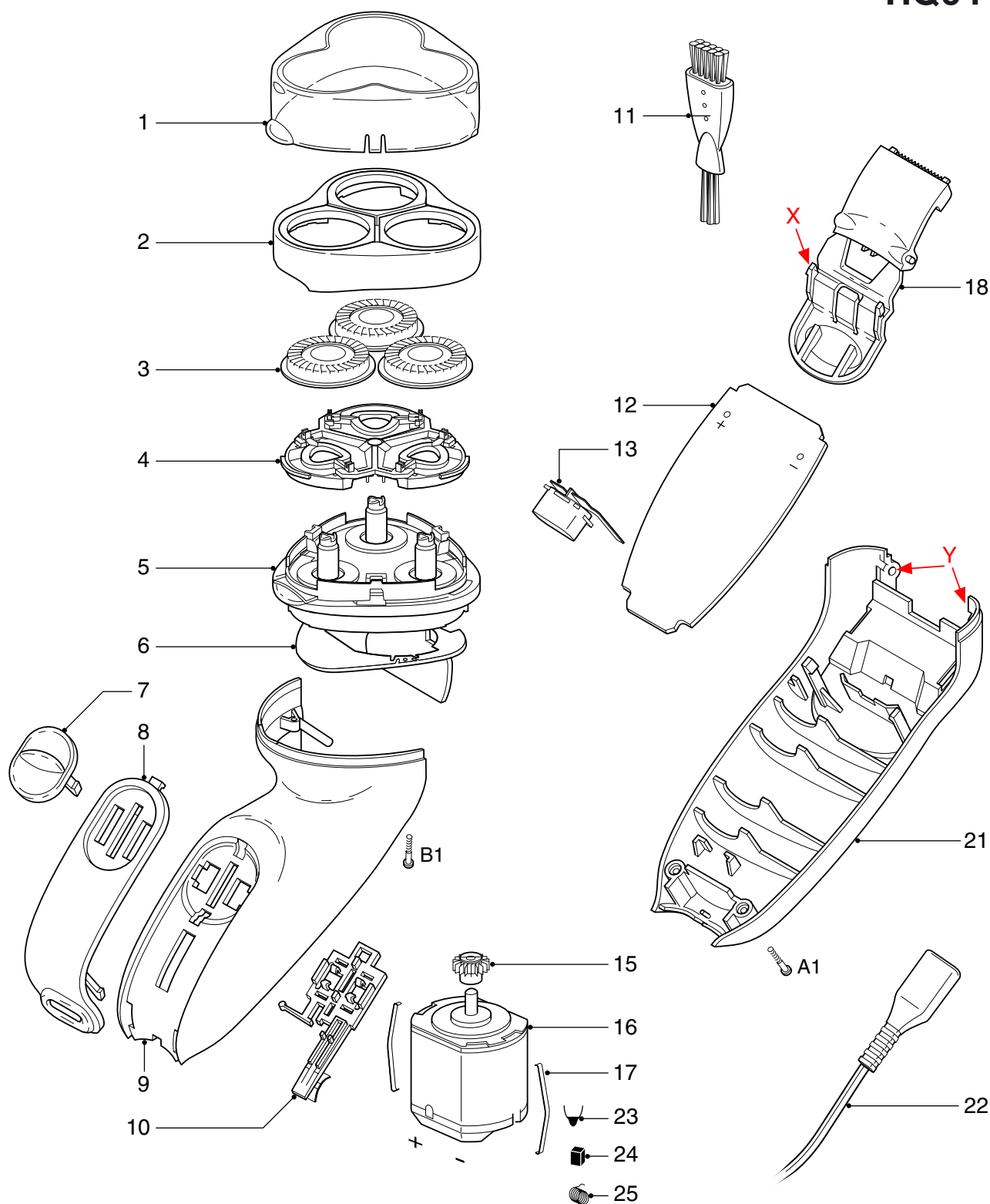
Fig. 1

REPAIR INSTRUCTION

- No specific issues

OPTIONAL (accessories)

- Pouch - 4222 036 08480



Pos	Service code	Description	
1	4222 036 05430	protecting cap	
2	4222 036 09010	bracket	
3	4222 036 08370	HQ55 shaving head	
4	4222 036 05460	holder assy	
5	4222 036 08380	hair chamber complete	
6	4822 466 10937	dust seal	
7	4222 036 08390	on/off knob	
8	4222 036 08440	panel	EUR
9	4222 036 05720	housing	
10	4222 036 05510	on/off slide assy	
11	4822 479 30183	cleaning brush	
12	4222 036 05540	printed circuit board	
13	4222 036 05550	inlet	

Pos	Service code	Description	
15	4822 522 33605	pinion	
16	4822 361 30455	motor assy	
17	4822 492 71735	motor spring	
18	4222 036 08420	trimmer assy	
21	4222 036 05730	cover	
22	4822 321 10095	flex assy	EUR
	4822 321 10096	flex assy	GBR
23	4222 036 05520	capacitor Y5P	470 pF
24	4822 362 40181	carbon brush	
25	4822 492 62703	spring	
	4822 502 30526	screw (torx-slot)	
	4222 036 08480	pouch	EUR