


**Philips Domestic Appliances and Personal Care**

Service Manual

PRODUCT INFORMATION

- This product meets the requirements regarding interference suppression on radio and TV.
- After the product has been repaired, it should function properly and has to meet the safety requirements as officially laid down at this moment.

TECHNICAL INFORMATION

- Input voltage : 100-240 V, 50/60 Hz
- Power consumption : max. 9 W
- Motor voltage : 2.4 V 
- Battery : 2x NiCd AA
- Battery capacity : approx. 700 mAh
- Charging indicator : 1x LED green
- Charging time : approx. 8 hours
- Charging current : 120 mA continuous
- Charging device : HQ600 external transformer
- Shaving heads : HQ167 - 4222 036 04250
- Shaving emulsion : HQ160 shaving emulsion
: HQ161 fresh gel
- Mains shaving : no
- SAP coding : HQ6705

DISASSEMBLY- AND RE-ASSEMBLY ADVISE

- Remove the shaving unit to prevent damage during repair.
- Remove the outer cover (item 27) and cartridge (item 28).
- Remove 5 A1 screws.

REPAIR INSTRUCTION

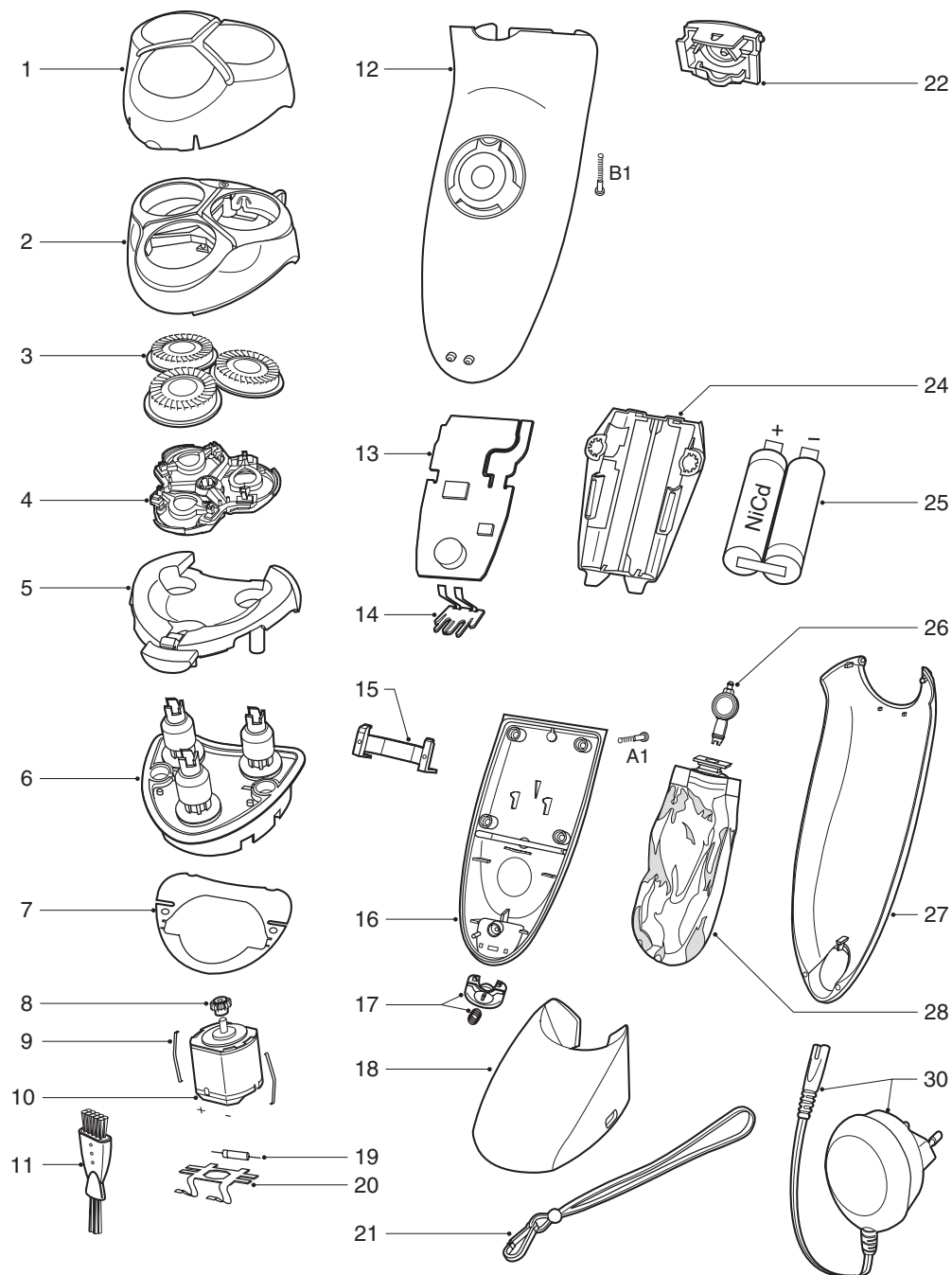
- After the cover (item 16) has been removed, it must be checked if its sealing has not been damaged.
- The cover (item 16) contains a sticker that is permeable to gas yet impermeable to water.
This sticker may not be removed under any circumstances.
- Unsolder the motor connector and remove the PCB.
- To replace the motor (item 10) or the driving unit (item 6), screws B1 must be removed first.
Then push the entire unit out of the housing (item 12) and check if its sealing is damaged.
- The entire driving unit (item 6) is supplied as a single part to guarantee optimal sealing of the gear shafts.
- A replacement of the pump button (item 22) is only possible after removal of the hair chamber (item 5).
- To guarantee that the shaver is completely watertight, only the original screws may be used.
- To charge the shaver only the original HQ600 power plug may be used.

OPTIONAL (accessories)

- No specific issues

PARTS LIST & EXPLODED VIEW

HQ6705



Pos	Service code	Description
1	4222 036 04140	protecting cap neptunus
2	4222 036 04260	head housing
3	4222 036 04250	HQ167 shaving head
4	4222 036 04270	retaining bracket
5	4222 036 04240	hair chamber
6	4222 036 04200	gearwheel unit
7	4222 036 04210	sealing plate
8	4822 522 10763	pinion
9	4822 492 71735	motor clamp
10	4822 361 21783	motor 2,4 V
11	4822 479 30183	cleaning brush
12	4222 036 05040	housing EUR
13	4222 036 05050	power modul
14	4822 265 11548	connector
15	4822 256 10454	holder
16	4222 036 05060	cover
17	4222 036 04190	release knob

Pos	Service code	Description
18	4222 036 04100	stand
20	4222 036 06700	motor connector
21		n/a
22	4222 036 04170	pump button
23		n/a
24	4222 036 04220	battery holder
25	4822 138 10334	NiCd pack AA
26	4822 360 10389	pump
27	4222 036 04150	outer cover
28	4222 036 04400	HQ160 shaving emulsion
	4222 036 04410	HQ161 fresh gel
29		n/a
30	4222 036 03690	power plug EUR
	4222 036 03790	power plug CAN
A	4822 502 14545	s.t.screw spec
B	4822 502 14544	s.t.screw 1.8 x 1.8/T8