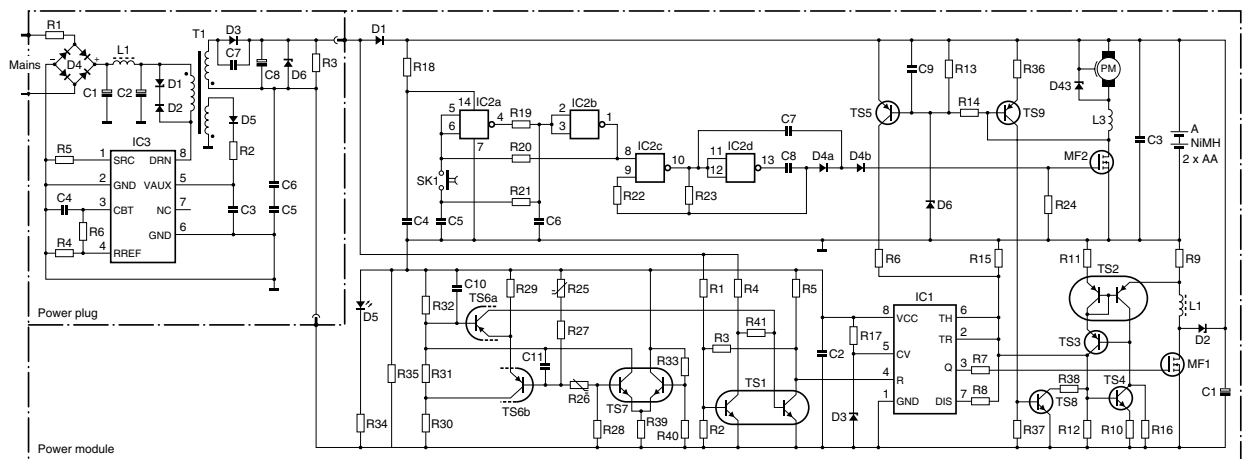




Philips Domestic Appliances and Personal Care

Service Manual



TIPS FOR REPAIR

- Remove the shaving unit to prevent damage during repair.
- Remove screws A1 (2x, of which 1 is under trimmer slide).
- After the cover (item 27) has been removed, it must be checked if the rubber seal (item 3) has not been damaged.
- The cover contains a sticker that is permeable to gas yet impermeable to water. This sticker may not be removed under any circumstances.
- Remove the metal brackets.
- Unsolder the motor connector and remove the PCB.
- To replace the motor (item 20) or the driving unit (item 16), screws B1 must be removed first.
- Then push the entire unit out of the housing (item 2) and check if its sealing is damaged.
- Detach the motor clamping springs (item 21) with a small screwdriver.
- The entire driving unit (item 16) is supplied as a single part to guarantee optimal sealing of the gear shafts.
- To guarantee that the shaver is completely watertight, only the original screws may be used.
- To charge the shaver only the original HQ6000 power plug may be used.

TECHNICAL DATA

Input voltage	: 100-240 V, 50/60 Hz
Power consumption	: max. 7 W
Motor voltage	: 2.4 V
Battery	: 2x NiMH AA
Battery capacity	: approx. 1100 mAh
Charging indicator	: 1x LED green - charge
Charging time	: approx. 1 hour
	: initial 4 hours
Charging current	: 1100/40 mA temp. dependent
Power supply	: HQ6000 external transformer
	: HQ6010 car cord
Shaving heads	: HQ6 - 4822 690 10214
Cleaning	: wet / dry
Comfort control	: fixed setting
	: 3-D contour following
Mains shaving	: yes

SAP CODING : HQ6832

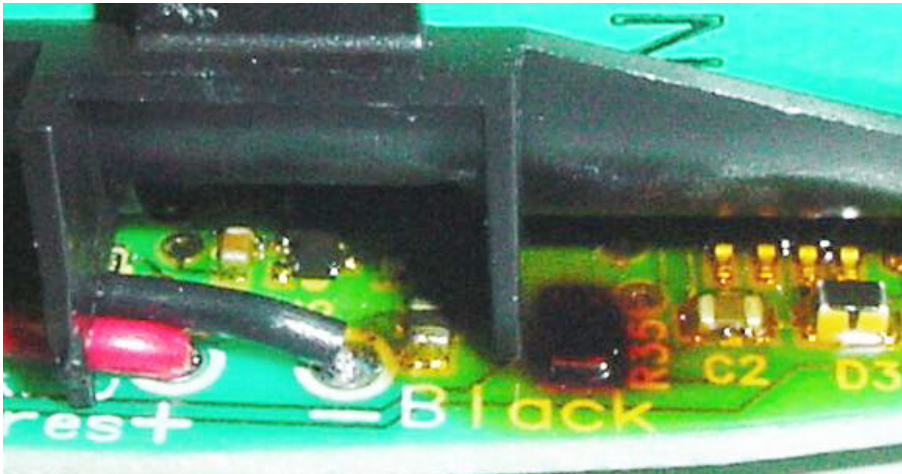


HQ6832/A

If the HQ6832/A shaver is supplied with a HQ8000 powerplug, remove R35 from the PCB.

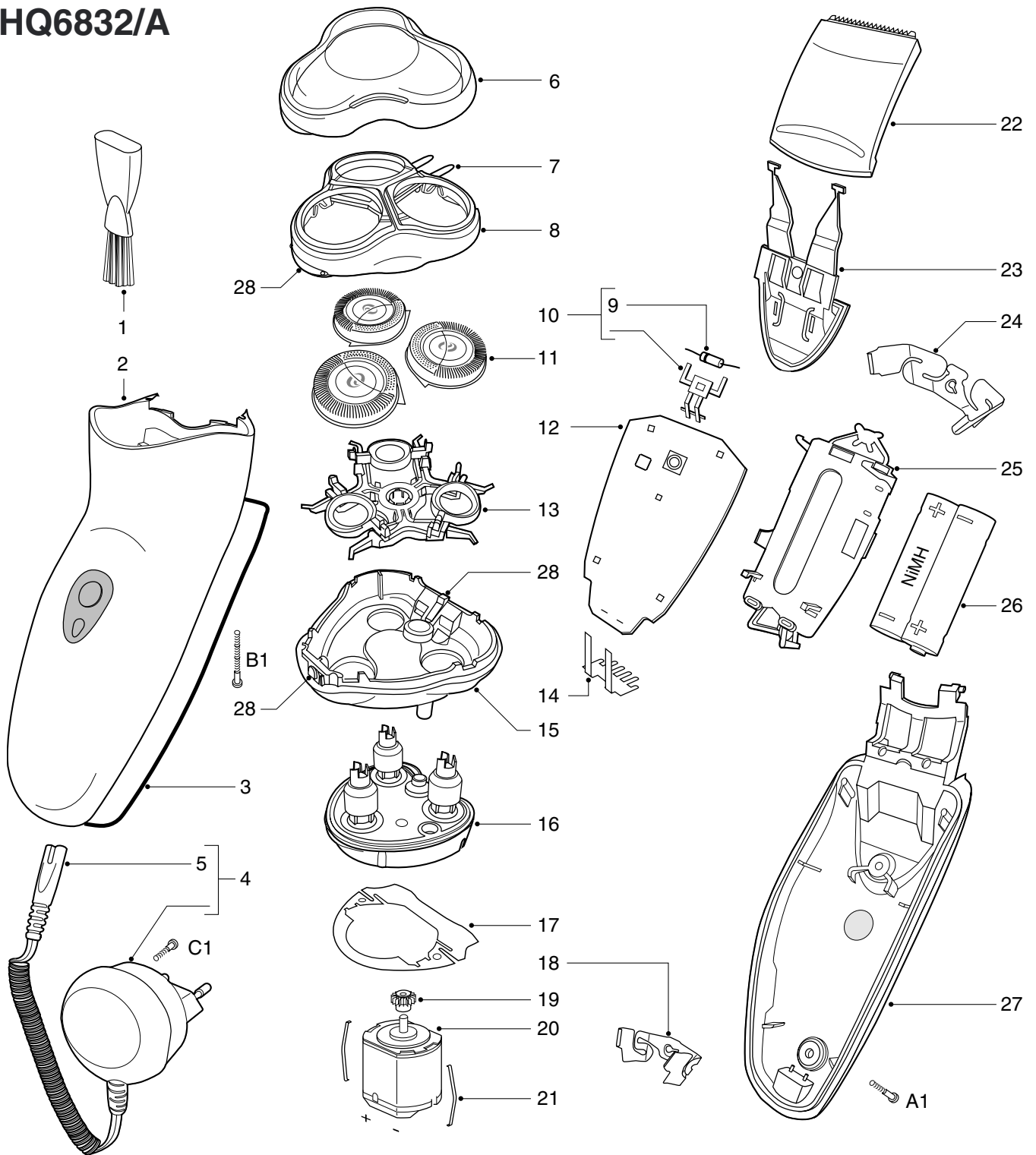
Removing R35 will not adversely affect the shaver's performance.

If the shaver has been supplied with a HQ8000 plug, R35 and its surrounding will look burned. See picture.



If the customer complaint can be related to battery capacity, also replace the battery.

HQ6832/A



- 1 4822 479 20261 cleaning brush
- 2 4222 036 04650 housing
- 3 4822 466 12232 rubber seal
- 4 4822 219 10711 power plug EU
- 4822 219 10717 power plug J
- 5 4222 036 03160 curled flex
- 6 4822 462 11177 protecting cap
- 7 4222 036 02950 hinge spring
- 8 4822 441 12327 head housing
- 9 4822 130 34167 BZX79-C6V2 Zener
- 10 4222 036 03200 motor connector
- 11 4822 690 10214 HQ6 shaving head
- 12 4822 214 13054 power module
- 13 4822 402 11319 retaining bracket
- 14 4822 265 11548 connecting pins

- 15 4822 442 01829 hair chamber
- 16 4822 522 10762 gearwheel unit
- 17 4822 466 12233 sealing plate
- 18 4822 402 11318 bracket small
- 19 4822 522 10763 pinion
- 20 4822 361 21783 motor 2.4V
- 21 4822 492 71735 motor clamp
- 22 4822 690 10216 trimmer
- 23 4822 463 11258 trimmer slide
- 24 4822 402 11317 bracket large
- 25 4222 036 03020 spacer AA/B
- 26 4822 138 10728 NiMH pack AA
- 27 4222 036 04580 cover
- 28 4222 036 02960 lock parts

- A 4822 502 14657 s.t.screw spec/T8
- B 4822 502 14544 s.t.screw 1.8x18/T8
- C 4822 502 30526 s.t.screw 1.8x10/T8
- 4822 600 10856 pouch PH
- 4222 036 01240 HQ6010 car cord