



Philips Domestic Appliances and Personal Care

Service Manual

PRODUCT INFORMATION

Shaving system

- 3-dimensional contour following system
- Lift & Cut system
- Individually floating heads
- Three Super Reflex Action shavingheads HQ55
- Silent power
- Hair collecting chamber

Power system

- Rechargeable
- Mains operation possible
- 1 hour charge time
- Up to 30 minutes cordless shaving time
- Quick charge in 6 minutes for 1 cordless shave
- World-wide automatic voltage selection

Features

- Travel pouch
- Pop-up trimmer

Luxe

Safety information

- This product meets the requirements regarding interference suppression on radio and TV.
- After the product has been repaired, it should function properly and has to meet the safety requirements as officially laid down at this moment.

TECHNICAL INFORMATION

- Voltage : 100-240 V AC 50-60 Hz
- Power consumption : Motor depending
- Motor Voltage : 1,2 V
- Power system : Rechargeable
- : corded operation possible
- Shaving heads : HQ55 - 4222 036 08370
- Charging indication : 1 led green
- SAP coding : HQ6849

DISASSEMBLY- AND RE-ASSEMBLY ADVISE

- Remove shaving unit, to prevent damages during repairs.
- Remove the screws A1 (2x).
- Remove cover. (See Fig. 1)
- To remove the trimmer, first disassemble the trimmer slide by pushing down the locking pegs (2 x "X" in exploded view) and move the slide slightly outwards.
- Make room between trimmer and cover with a small screwdriver ("Y" in exploded view).
- Remove screws B1 (2 x).
- The PC-board with motor and hairchamber can now be removed from the housing.
- Detach the motor clamping springs (item 17) on the bearing block with a small screwdriver

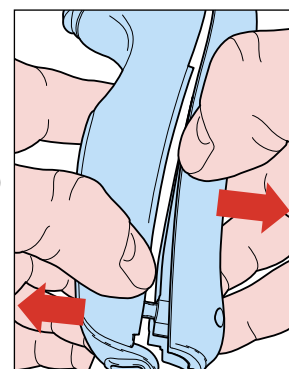


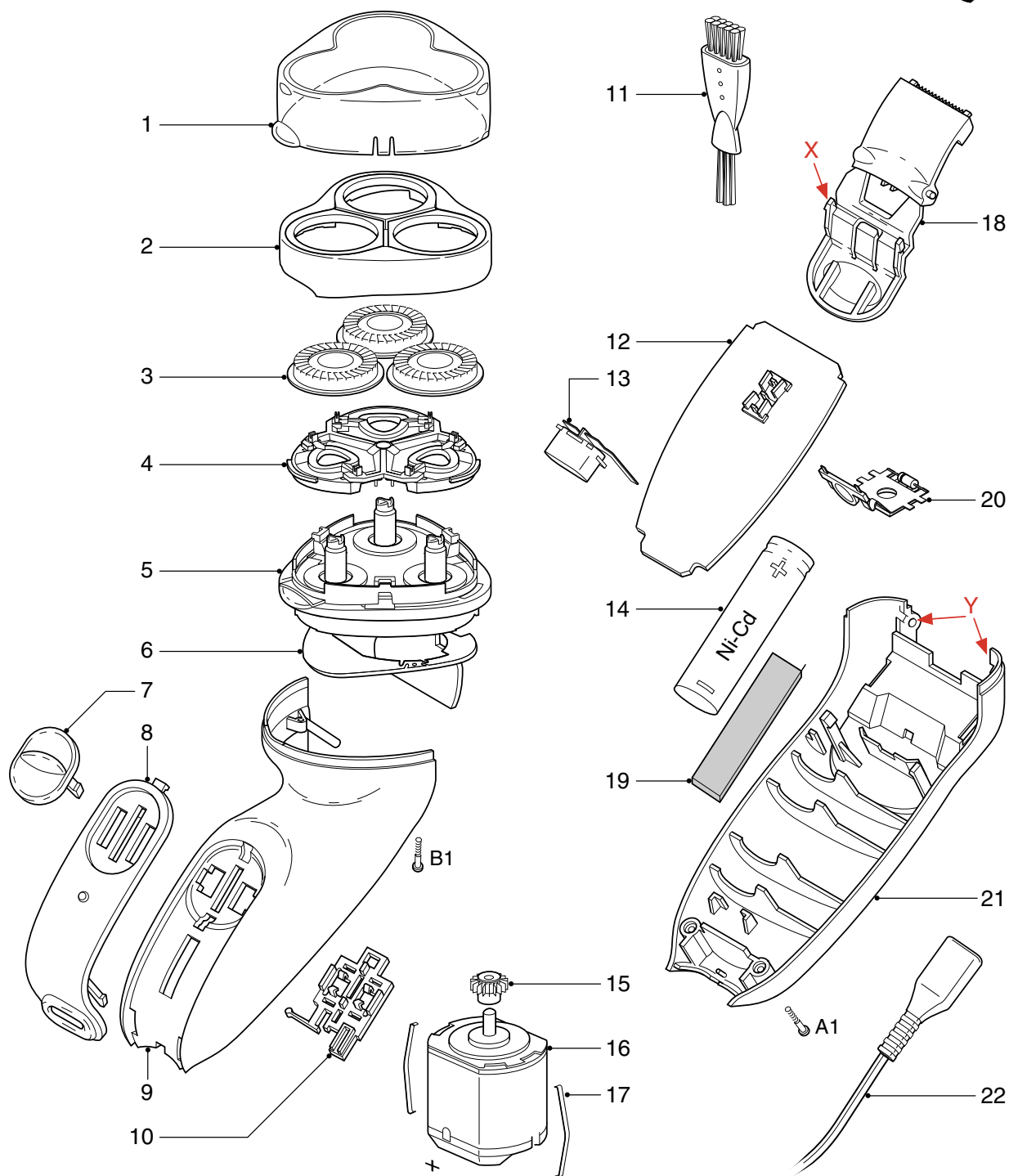
Fig. 1

OPTIONAL (accessories)

- Pouch - 4222 036 08450

EXPLODED VIEW & PARTS LIST

HQ6849



Pos	Service code	Description
1	4222 036 05430	protecting cap
2	4222 036 09010	bracket
3	4222 036 08370	HQ55 shaving head
4	4222 036 05460	holder assy
5	4222 036 08380	hair chamber complete
6	4822 466 10937	dust seal
7	4222 036 08390	on/off knob
8	4222 036 08590	panel
	4222 036 08600	panel
9	4222 036 08940	housing
10	4222 036 05650	on/off slide assy
11	4822 479 30183	cleaning brush
12	4222 036 08650	printed circuit board
13	4222 036 05550	inlet
14	4822 138 10633	AA NiCd cell

Pos	Service code	Description
15	4822 522 33605	pinion
16	4822 361 10959	motor assy
17	4822 492 71735	motor spring
18	4222 036 08420	trimmer assy
19	4822 466 12153	foam
20	4222 036 05670	connecting strip
21	4222 036 05730	cover
22	4822 321 10344	flex assy
	4822 321 10096	flex assy
	4222 036 02480	flex assy
	4822 321 10095	flex assy
	4822 502 30526	screw (torx-slot)
	4222 036 08450	pouch
	4222 036 08620	pouch

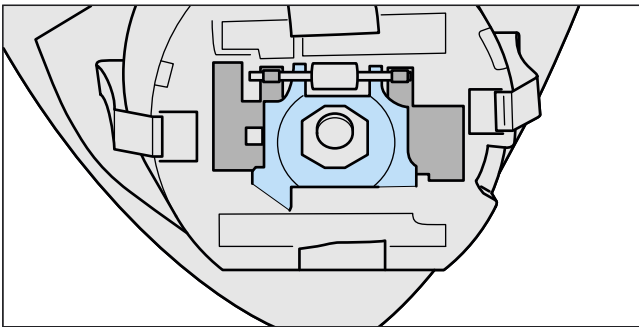
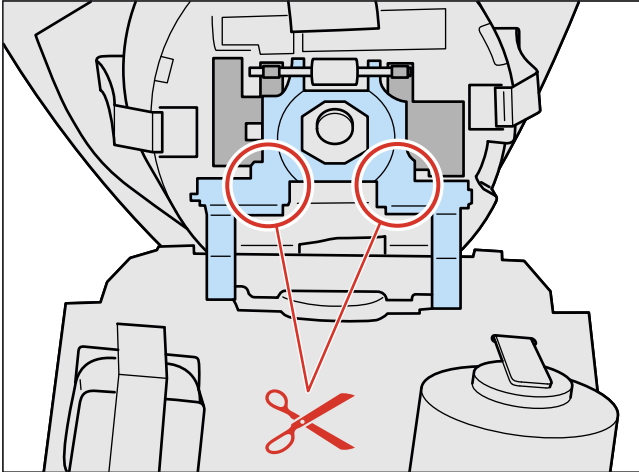
USA
GBR
KOR
EUR
EUR
EUR
EUR
NOR

Old to new PCB

You can use the PCB with service code 4222 036 13300

Give consideration to the following steps:

Cut the connecting strip



Place a new Battery on the PCB.

You can't use the old Battery (the new PCB is a one hour charging PCB).

Place the new PCB and connect the wires to the old connecting strip.