



Philips Domestic Appliances and Personal Care

Service Manual

SAP coding HQ 7415

HINTS FOR REPAIR:

- Remove shaving unit, to prevent damages during repairing.
- Remove screws A1 (2x), open trimmer for screw.
- Take cover from housing (trimmer must be closed).
- Remove bracket (14 and 21).
- The PCB-board can now be removed out of the housing.
- Remove the connecting strip from the motor by dis soldering.
- Remove screws B1 (2 x), now the motor and hairchamber can be removed out of the housing.
- Detach the motor springs (17) from the gearwheel unit with a small screwdriver.

ASSEMBLY:

- Think by assembly on right placing of the trimmer

GENERAL:

- Main shaver
- Constant motor voltage
- Electronic push on/off
- Washable

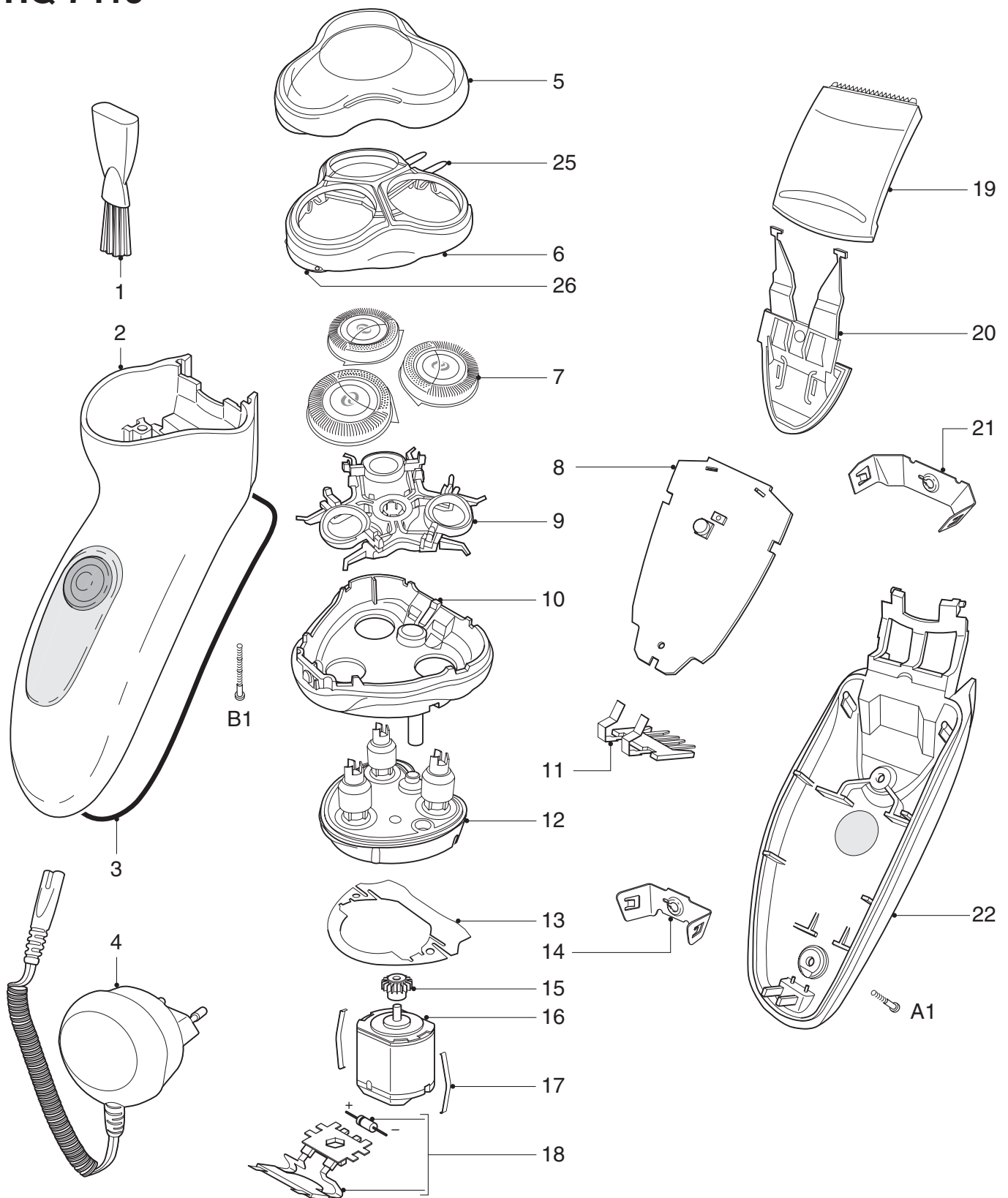
TECHNICAL DATA:

Voltage	: 100 - 240 Volt 50 - 60 Hz
Motor voltage	: 6,2 Volt
Shaving heads	: HQ7 - 4222 036 06570

This product meets the requirements regarding interference suppression on radio and TV.

After the product has been repaired, it should function properly and has to meet the safety requirements as officially laid down at this moment.

HQ 7415



1 4822 479 30183	cleaning brush	9 4822 402 11319	retaining bracket	19 4222 036 06630	trimmer assy
2 4222 036 06540	housing	10 4222 036 06600	hair chamber	20 4222 036 06640	trimmer slide assy
3 4822 466 12232	rubber seal	11 4822 265 11548	connecting pins	21 4222 036 06650	bracket large
4 4222 036 05791	power plug	12 4822 522 10762	driving unit	22 4222 036 06670	cover
4222 036 07250	power plug GBR	13 4822 466 12233	sealing plate	25 4222 036 02950	spring hinge
4222 036 04010	power plug CAN/ROW	14 4222 036 06610	bracket small	26 4222 036 07330	unlock knob
5 4222 036 06550	protecting cap	15 4822 522 10763	pinion	A1 4822 502 14657	S.t. screw spec/T8
6 4222 036 06560	bracket	16 4822 361 11177	motor	B 4822 502 14544	S.t. screw 1,8x18/T8
7 4222 036 06570	HQ7 shaving heads	17 4822 492 71735	motor clamp	4222 036 06680	pouch
8 4222 036 06580	power modul	18 4222 036 06620	connecting strip assy		