



Philips Domestic Appliances and Personal Care

# Service Manual

## PRODUCT INFORMATION


### Features

- Rechargeable shaver
- Constant motor voltage
- Electronic push on/off
- Washable
- NiCd cell 2 AA
- Charge time 8 hr
- Charging (mains) indication

### Safety information

- This product meets the requirements regarding interference suppression on radio and TV.
- After the product has been repaired, it should function properly and has to meet the safety requirements as officially laid down at this moment.

## TECHNICAL INFORMATION

- Input voltage : 100-240 V, 50/60 Hz
- Motor voltage : 2.4 V 
- Shaving heads : HQ6 - 4822 690 10214
- SAP coding : HQ7616

## DISASSEMBLY- AND RE-ASSEMBLY ADVISE

- Think by assembly on right placing of the trimmer.

## REPAIR INSTRUCTION

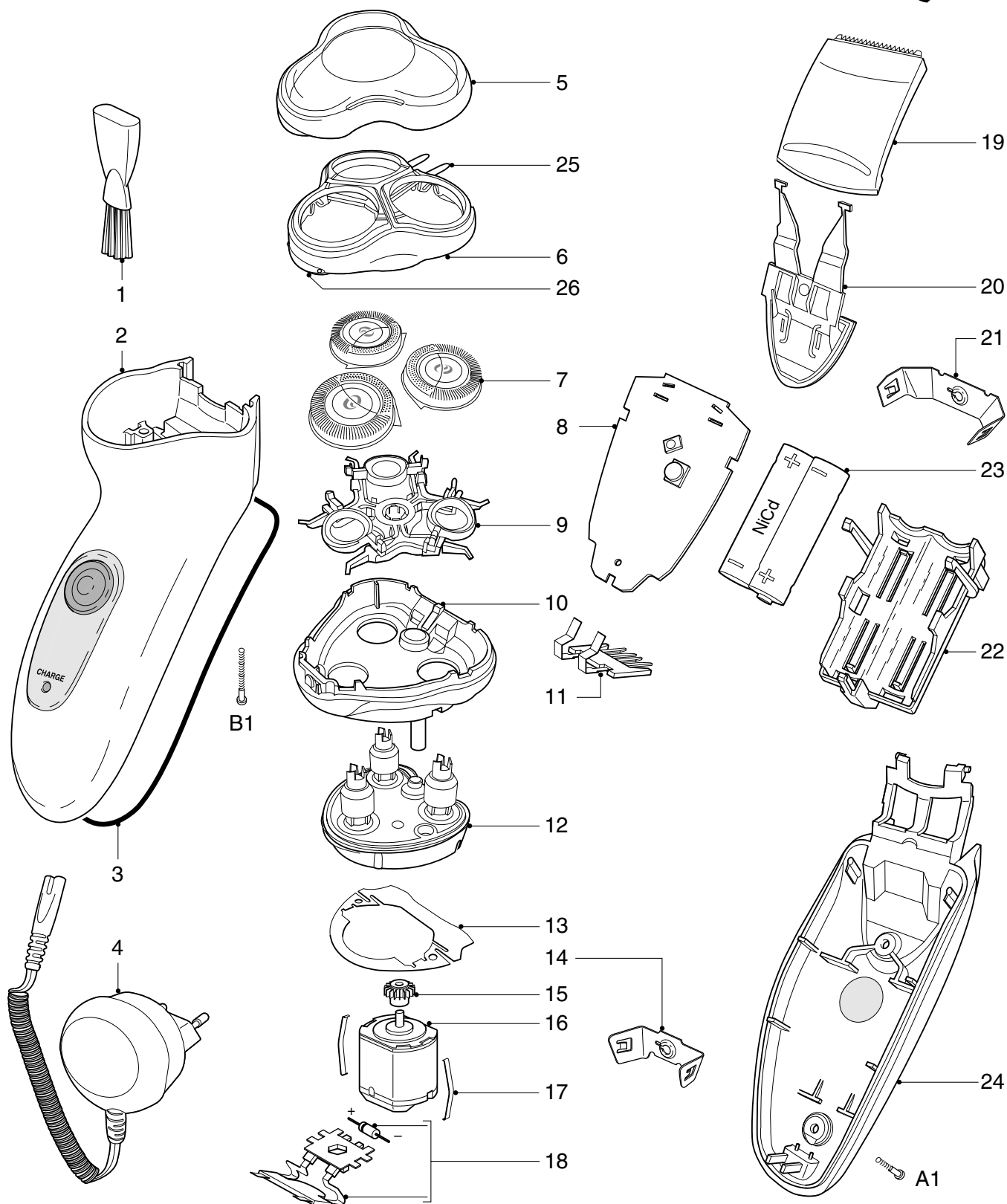
- Remove shaving unit, to prevent damages during repairing.
- Remove screws A1 (2x), open trimmer for screw.
- Take cover from housing (trimmer must be closed).
- Remove bracket (14 and 21).
- The PCB-board can now be removed out of the housing.
- Remove the connecting strip from the motor by dis soldering.
- Remove screws B1 (2 x), now the motor and hairchamber can be removed out of the housing.
- Detach the motor springs (17) from the gearwheel unit with a small screwdriver.

## OPTIONAL (accessories)

- No specific issues

# PARTS LIST & EXPLODED VIEW

# HQ7616



Pos	Service code	Description
1	4822 479 30183	cleaning brush
2	4222 036 10970	housing assy EUR
3	4822 466 12232	rubber seal
4	4222 036 04080	power plug EUR
	4222 036 04850	power plug Kor
	4222 036 06800	power plug Can/Tw/Ven
5	4222 036 06550	protecting cap
6	4222 036 06560	bracket
7	4222 036 06570	HQ7 shaving heads
8	4222 036 06690	power modul
9	4822 402 11319	retaining bracket

Pos	Service code	Description
10	4222 036 06600	hair chamber
11	4822 265 11548	connecting pins
12	4822 522 10762	driving unit
13	4222 036 04210	sealing plate
14	4222 036 06610	bracket small
15	4822 522 10763	pinion
16	4822 361 21783	motor
17	4822 492 71735	motor clamp
18	4222 036 06700	connecting strip assy
19	4222 036 06630	trimmer assy
20	4222 036 06640	trimmer slide assy

Pos	Service code	Description
21	4222 036 06650	bracket large
22	4222 036 06710	spacer AA
23	4222 036 06720	2-AA cell NiCd
24	4222 036 10980	cover
25	4222 036 02950	spring hinge
26	4222 036 07330	unlock knob
A1	4822 502 14657	S.t. screw spec/T8
B1	4822 502 14544	S.t. screw 1,8x18/T8
	4222 036 06680	pouch EUR
	4222 036 06750	pouch LE/ME

■ = changed