



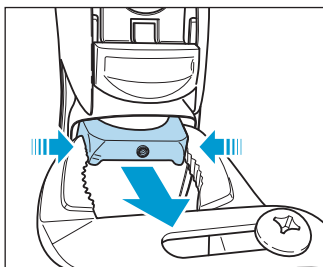
Philips Domestic Appliances and Personal Care

Service Manual

SAP coding HQ 8875

HINTS FOR REPAIR:

- Remove shaving unit, to prevent damages during repairing.
- Remove screws A1 (2x).
- Take cover from housing (trimmer must be opened).
- Remove bracket large (17).



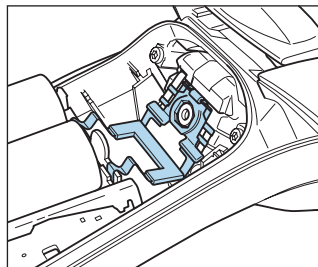
- The PCB-board can now be removed out of the housing.
- Remove the connecting strip from the motor by dis soldering.
- Remove screws B1 (2 x), now the motor and hairchamber can be removed out of the housing.
- Detach the motor springs (14) from the gearwheel unit with a small screwdriver.

This product meets the requirements regarding interference suppression on radio and TV.

After the product has been repaired, it should function properly and has to meet the safety requirements as officially laid down at this moment.

ASSEMBLY:

- Think by assembly on the hooks from the connecting strip assy.



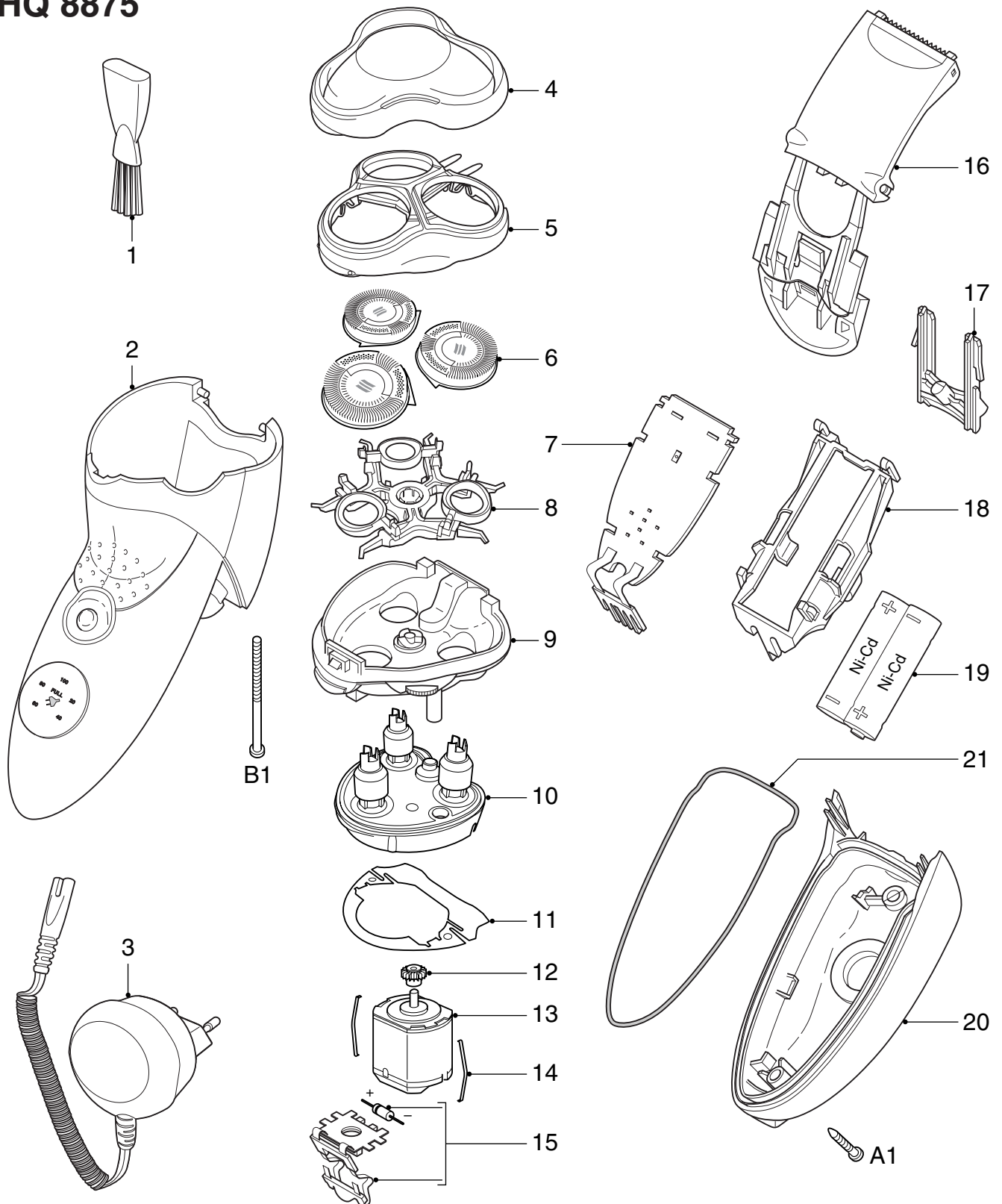
GENERAL:

- Rechargeable / Main shaver
- Constant motor voltage
- Electronic push on/off
- Washable

TECHNICAL DATA:

Voltage	: 100 - 240 Volt	50 - 60 Hz
Motor voltage	: 2,4 Volt	
Speed of cutters	: > 2100 r.p.m.	
Shaving heads	: HQ6 - 4222 036 05821	
Battery capacity indication	: 7 LED	
Battery full indication	: LED	
Battery low indication	: LED (red)	
Charge indication	: LED (green)	
Battery	: AA pack NiCd	

HQ 8875



1	4222 036 05771	cleaning brush	13	4822 361 21783	motor
2	4222 036 06191	housing	14	4822 492 71735	motor spring
3	4822 219 10711	power plug	15	4222 036 06001	connecting strip assy
	4222 036 04011	power plug Can/Row	16	4222 036 05871	trimmer assy
4	4222 036 05801	protecting cap	17	4222 036 05881	bracket large
5	4222 036 05811	bracket	18	4222 036 06141	spacer AA
6	4222 036 05821	HQ6 shaving heads	19	4222 036 06151	2-AA-pack NiCd
7	4222 036 06201	mains	20	4222 036 06211	cover
8	4222 036 05841	holder assy	21	4222 036 05911	rubber seal
9	4222 036 05851	hair chamber			
10	4222 036 05411	driving unit	A	4222 036 05921	screw J1-6
11	4822 466 12233	dust seal	B	4222 036 05931	screw 1ADU
12	4822 522 10763	pinion		4222 036 06221	pouch