



Philips Domestic Appliances and Personal Care

Service Manual

SAP coding HQ 8885

HINTS FOR REPAIR:

- Remove shaving unit, to prevent damages during repairing.
- Remove screws A1 (2x).
- Take cover from housing (trimmer must be opened).
- Remove bracket large (17). See Fig. 1
- The PCB-board can now be removed out of the housing.
- Remove the connecting strip from the motor by dis soldering.
- Remove screws B1 (2 x), now the motor and hairchamber can be removed out of the housing.
- Detach the motor springs (14) from the gearwheel unit with a small screwdriver.
- For removing the LCD you need a torx screwdriver, set it under the LCD bracket and turn the screwdriver. See Fig. 2

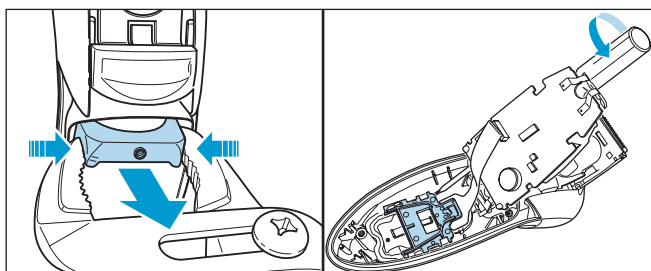


Fig.1

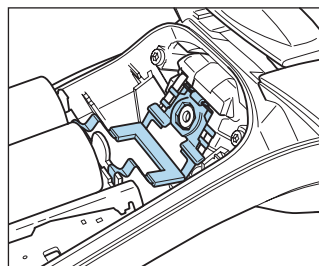
Fig. 2

This product meets the requirements regarding interference suppression on radio and TV.

After the product has been repaired, it should function properly and has to meet the safety requirements as officially laid down at this moment.

ASSEMBLY:

- Think by assembly on the hooks from the connecting strip assy.



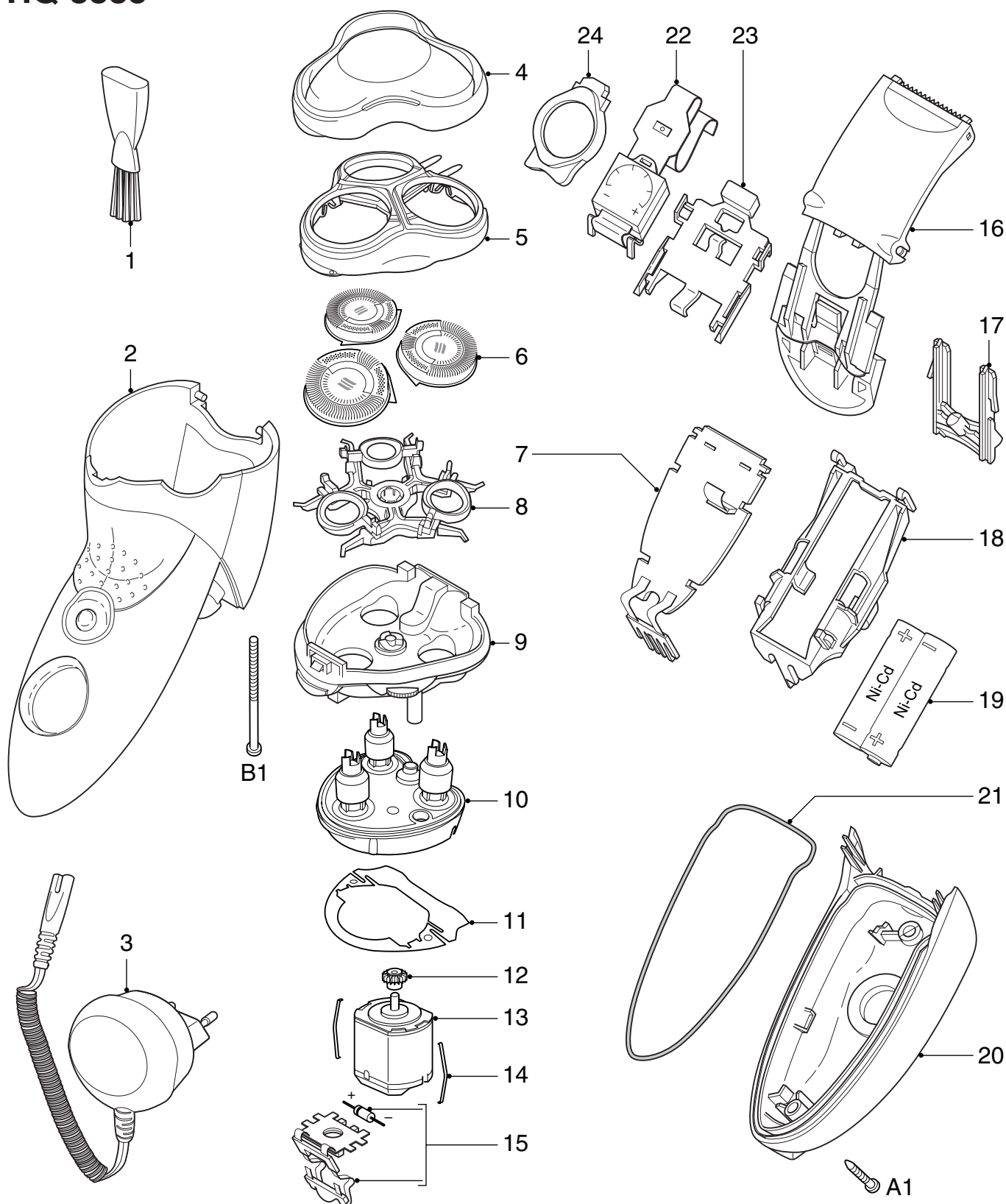
GENERAL:

- Rechargeable / Main shaver
- Constant motor voltage
- Electronic push on/off
- Washable

TECHNICAL DATA:

Voltage	: 100 - 240 Volt	50 - 60 Hz
Motor voltage	: 2,4 Volt	
Speed of cutters	: > 2100 r.p.m.	
Shaving heads	: HQ6 - 4222 036 05821	
Battery capacity indication	: LCD	
Battery full indication	: LCD	
Battery low indication	: LCD + audible	
Charge indication	: LCD	
Battery	: AA pack NiCd	

HQ 8885



1	4222 036 05771	cleaning brush	10	4222 036 05411	gearwheel unit	20	4222 036 06291	cover
2	4222 036 06271	housing	11	4822 466 12233	dust seal	21	4222 036 05911	rubber seal
3	4822 219 10711	power plug	12	4822 522 10763	pinion	22	4222 036 06301	LCD assy
	4222 036 04011	power plug Can/Row	13	4822 361 21783	motor	23	4222 036 06311	LCD bracket
4	4222 036 05801	protecting cap	14	4822 492 71735	motor spring	24	4222 036 06321	LCD reflector
5	4222 036 05811	bracket	15	4222 036 06001	conn. strip assy	A	4222 036 05921	screw J1-6
6	4222 036 05821	HQ6 shaving heads	16	4222 036 05871	trimmer assy	B	4222 036 05931	screw 1ADU
7	4222 036 06281	mains	17	4222 036 05881	bracket large		4222 036 06221	pouch
8	4222 036 05841	holder assy	18	4222 036 06141	spacer AA		4222 036 06331	stand
9	4222 036 05851	hair chamber	19	4222 036 06151	2-AA-pack NiCd			