



Philips Domestic Appliances and Personal Care

# Service Manual

## PRODUCT INFORMATION

### General:

- Rechargeable / Main shaver
- Constant motor voltage
- Electronic push on/off
- Washable

### Safety information

- This product meets the requirements regarding interference suppression on radio and TV.
- After the product has been repaired, it should function properly and has to meet the safety requirements as officially laid down at this moment.

## TECHNICAL INFORMATION

- Voltage : 100 - 240 Volt 50 - 60 Hz
- Motor voltage : 3,6 Volt
- Speed of cutters : > 2100 r.p.m.
- Shaving heads : HQ8 - 4222 036 05820
- Battery capacity indication : LCD
- Battery full indication : LCD
- Battery low indication : LCD + audible
- Charge indication : LCD
- Battery : AA pack NiMH (green)
- SAP coding : HQ8890

## DISASSEMBLY- AND RE-ASSEMBLY ADVISE

### Disassembly:

- Remove shaving unit, to prevent damages during repairing.
- Remove screws A1 (2x).
- Take cover from housing (trimmer must be opened).
- Remove bracket large (17). (see fig. 1)

- The PCB-board can now be removed out of the housing.
- Remove the connecting strip from the motor by dis soldering.
- Remove screws B1 (2 x), now the motor and hairchamber can be removed out of the housing.
- Detach the motor springs (14) from the gearwheel unit with a small screwdriver.
- For removing the LCD you need a torx screwdriver, set it under the LCD bracket and turn the screwdriver. (see fig. 2)

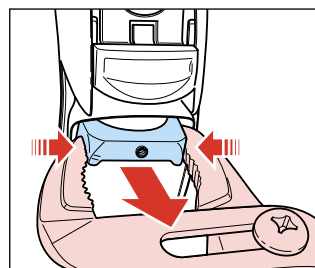


fig. 1

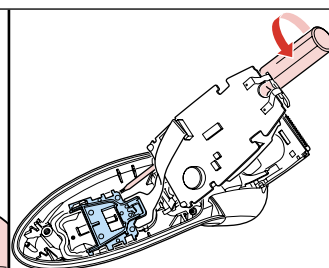


fig. 2

### Assembly:

- Think by assembly on the hooks from the connecting strip assy. (see fig. 3)

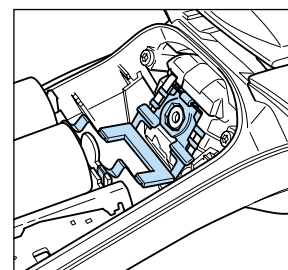


fig. 3

## REPAIR INSTRUCTION

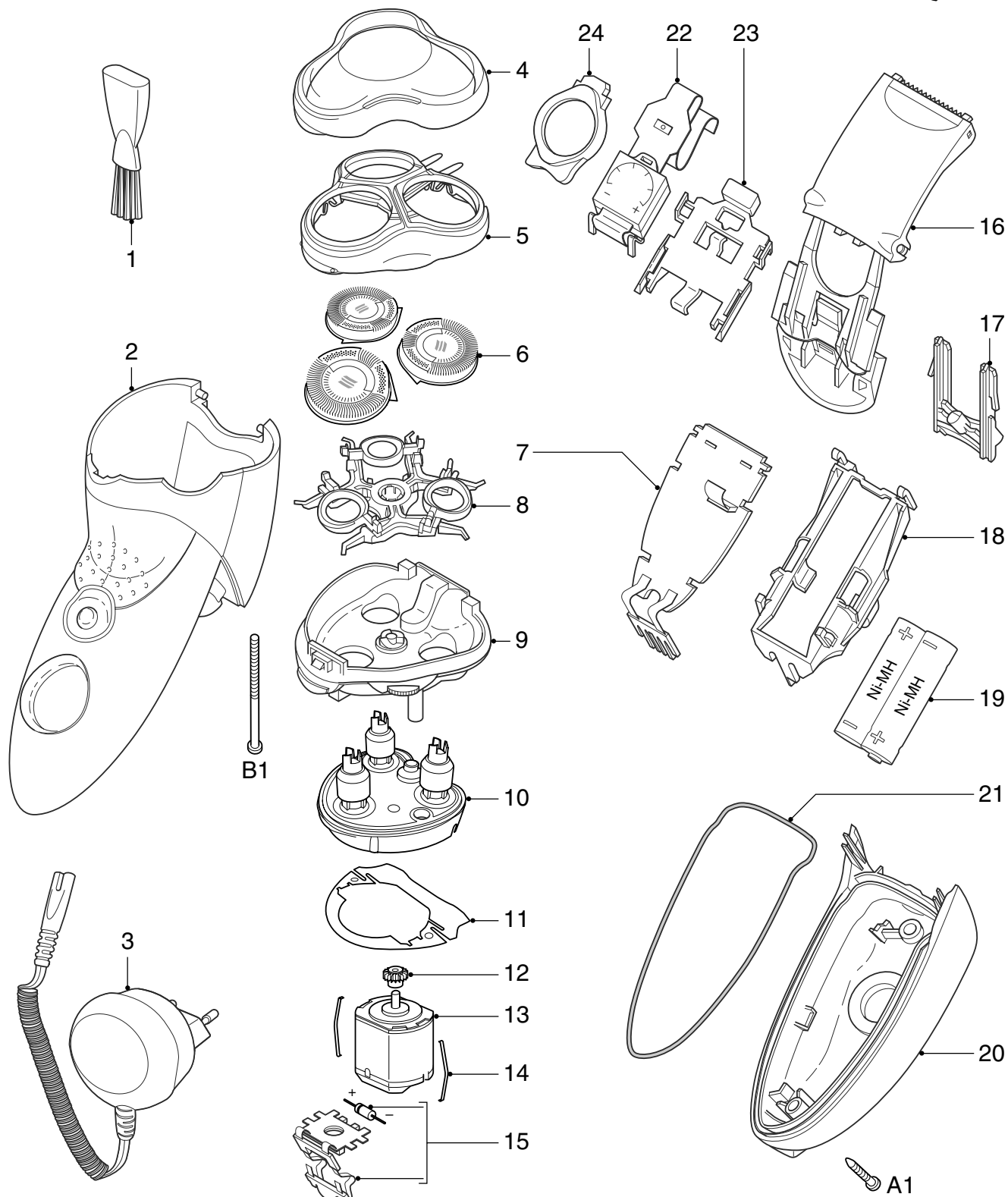
- No specific issues

## OPTIONAL (accessories)

- No specific issues

# PARTS LIST & EXPLODED VIEW

# HQ8890



Pos	Service code	Description
1	4222 036 05770	cleaning brush
2	4222 036 06340	housing
3	4222 036 06790	power plug EUR
	4222 036 03970	power plug GBR/ZAF
	4222 036 08930	power plug JAP
4	4222 036 05800	protecting cap
5	4222 036 05810	bracket
6	4222 036 05820	HQ8 shaving heads
7	4222 036 06360	mains
8	4222 036 05840	holder assy
9	4222 036 05850	hair chamber

Pos	Service code	Description
10	4222 036 05410	driving unit
11	4822 466 12233	dust seal
12	4822 522 10763	pinion
13	4822 361 21783	motor
14	4822 492 71735	motor spring
15	4222 036 06000	conn. strip assy
16	4222 036 05870	trimmer assy
17	4222 036 05880	bracket large
18	4222 036 06140	spacer AA
19	4822 138 10728	2-AA pack NiMH
20	4222 036 06290	cover

Pos	Service code	Description
21	4222 036 05910	rubber seal
22	4222 036 06300	LCD assy
23	4222 036 06310	LCD bracket
24	4222 036 06320	LCD reflector
A	4222 036 05920	screw J1-6
B	4222 036 05930	screw 1ADU
	4222 036 06220	pouch
	4222 036 06330	stand
	4222 036 10890	stand PH (Scuba)
	4222 036 10860	Clock

■ = changed