



Philips Domestic Appliances and Personal Care

Service Manual

SAP coding: HQC440

PRODUCT INFORMATION

General description:

2D ContourTracking System™

2D flexing guide comb offers maximum control and ensures perfect results every time.

Safety Lock

Safety Lock secures the selected length setting for increased accuracy and even cutting.

8 length settings (1-21 mm)

8 length settings allow a range of styling possibilities to suit the whole family

Materials used:

- housing : ABS
- combs : PA / PC
- others : PA / POM / SAN / steel

Features:

- lubrication for life** - Maintenance free cutting unit ensures consistent high performance
- Translucent guide comb** - For maximum visibility of the process
- 3D rounded teeth** - For ultimate skin protection
- Hygiene** - Hinged cutting lid allows easy cleaning
- Ultra light design** - Efficient and compact for optimal handling
- Styling comb, cleaning brush**

TECHNICAL INFORMATION:

Power supply	: AC
primary (EU)	: 220-240 V - 50/60 Hz
secondary (EU)	: 5,7 V - 1500 mA
primary (CDN / USA)	: 120 V - 60 Hz
secondary (CDN / USA)	: 5,7 V - 1500 mA

Dimensions F-box : 13,9 x 6,1 x 22,4 cm

Weight F-box : 0,6 kg

Weight product (without comb) : 103 g

REPAIR INSTRUCTIONS

- No specific issues

OPTIONAL (ACCESSORIES)

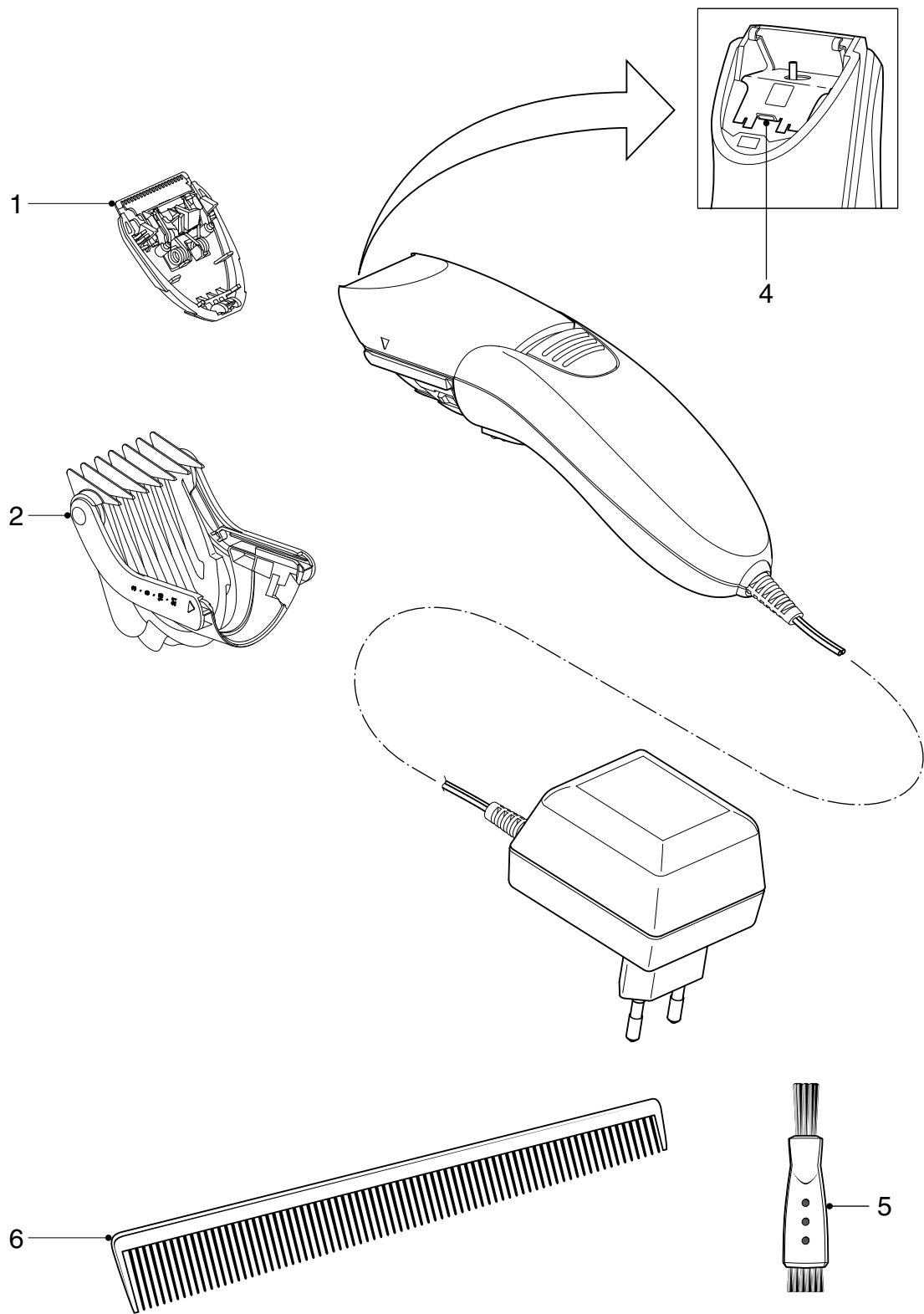
- No specific issues

Product meets the requirements regarding interference suppression on radio and TV.

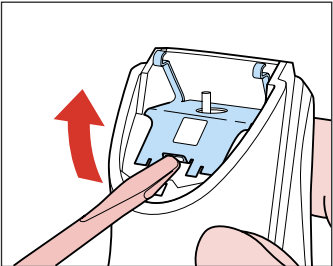
Never use again a deformed housing clamp (4). After the product has been repaired, it should function properly and has to meet the safety requirements as laid down and officially established at this moment.

EXPLODED VIEW

HQ-C440



DISASSEMBLY ADVISE



PARTS LIST

Pos	Service code	Description
1	4203 035 79340	Cutter
2	4203 035 79350	Comb
4	4203 035 71060	Housing clamp
5	4822 479 30183	Cleaning brush
6	4822 690 30433	Styling comb