



Philips Domestic Appliances and Personal Care

# Service Manual

SAP coding: HQC486

## PRODUCT INFORMATION

### General description:

#### 2D ContourTracking System™

2D flexing guide comb offers maximum control and ensures perfect results every time.

### Safety Lock

Safety Lock secures the selected length setting for increased accuracy and even cutting.

#### 15 length settings (1-41 mm)

15 length settings allow a range of styling possibilities to suit the whole family

### Materials used:

- housing : ABS
- combs : PA / PC
- others : PA / POM / SAN / steel

### Features:

#### lubrication for life

- Maintenance free cutting unit ensures consistent high performance

#### Translucent guide comb

- For maximum visibility of the process

#### 3D rounded teeth

- For ultimate skin protection

#### Hygiene

- Hinged cutting lid allows easy cleaning

#### Interactive CDrom

- The ultimate interactive way to help you style your hair

#### Ultra light design

- Efficient and compact for optimal handling

#### Barber set

- Styling comb, cleaning brush, scissors

#### Protective pouch

- Handy pouch for save storage or travel

## TECHNICAL INFORMATION:

Power supply : RC / AC  
Charging time : 12 h  
Cordless operation time : 35 min  
Charging indication : yes - LED on appliance

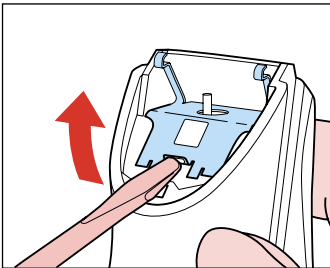
primary (EU) : 220-240 V - 50/60 Hz  
secondary (EU) : 1,3 V - 1500 mA  
primary (CDN / USA) : 120 V - 60 Hz  
secondary (CDN / USA) : 1,3 V - 1500 mA

Dimensions F-box : 19,5 x 8,1 x 24 cm

Weight F-box : 0,89 kg

Weight product (without comb) : 154 g

## DISASSEMBLY ADVISE



## REPAIR INSTRUCTIONS

- No specific issues

## OPTIONAL (ACCESSORIES)

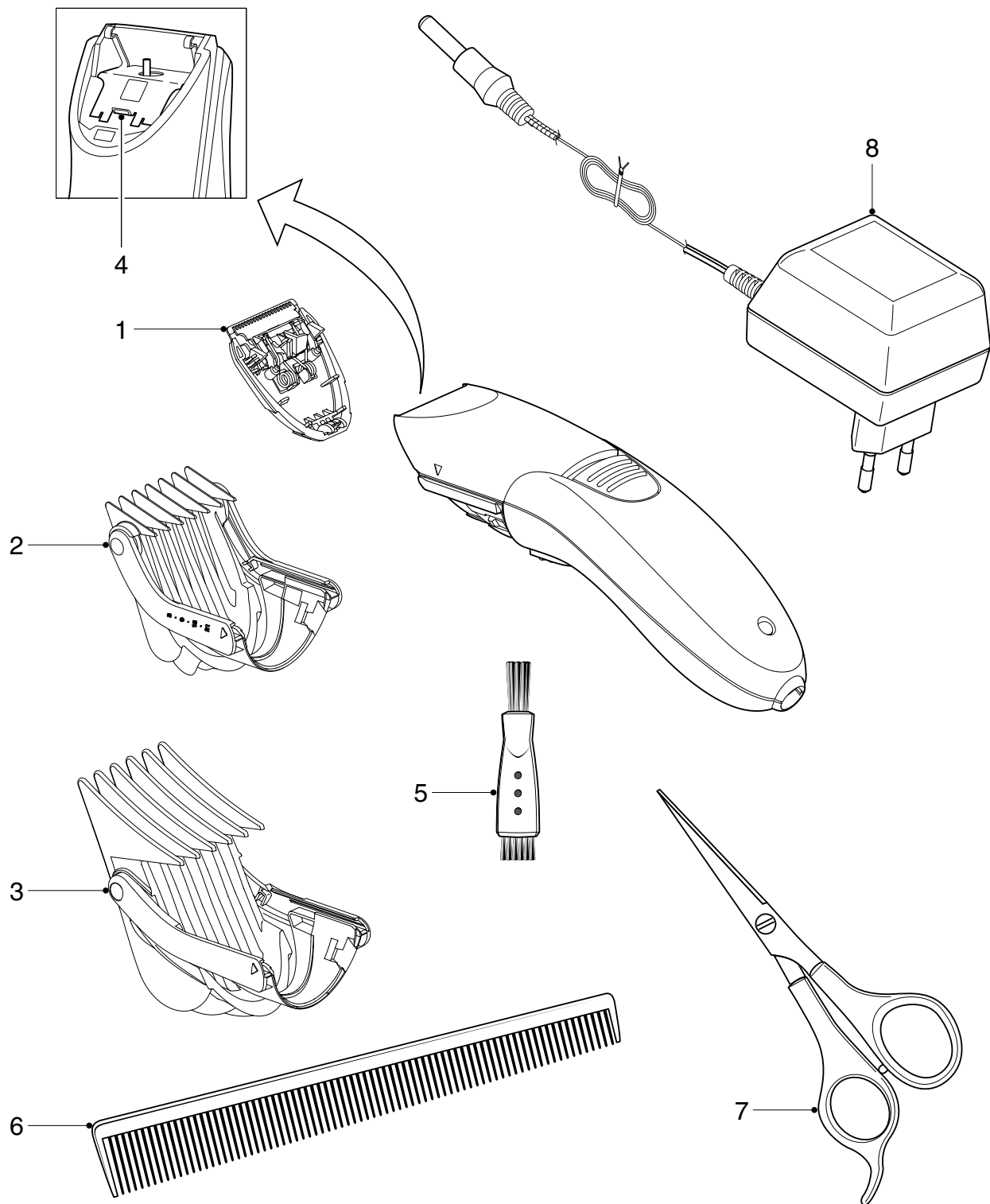
- No specific issues

Product meets the requirements regarding interference suppression on radio and TV.

Never use again a deformed housing clamp (4).  
After the product has been repaired, it should function properly and has to meet the safety requirements as laid down and officially established at this moment.

## NOTES :

- In order to guarantee the longest possible workinglife of the battery:
  - do not charge for more than 24 hours
  - do not keep the charging unit permanently plugged in
  - discharge the battery completely once a year by letting the motor run until it stops
- The appliance should be charged again, when not used for a long period



Pos	Service code	Description
1	4203 035 79340	Cutter
2	4203 035 79370	Small comb
3	4203 035 79360	Large comb
4	4203 035 71060	Housing clamp
5	4822 479 30183	Cleaning brush
6	4822 690 30433	Barbers comb

Pos	Service code	Description
7	4822 690 30434	Scissors
8	4822 690 30441	Adapter - EU
	4822 690 30442	Adapter - GB
	4822 690 30443	Adapter - USA
	4822 690 30444	Adapter - CANADA
	4822 219 10149	Adapter - AUS
	4822 219 10148	Adapter - JAPAN