

Service  
Service  
Service



Philips Domestic Appliances and Personal Care

# Service Manual

## PRODUCT INFORMATION

### Features :

- Adjustable comb attachment to set the beard length
- 9 positions, resulting beard length 1.5 - 18.0 mm
- Beard length indication window
- Zoom ring to set the comb to the requested position
- Pilot light, which will be on during charging
- Maintenance free cutting element: no oiling required

### Technical data :

Power system	: rechargeable
Batteries	: 1 x AA NiMh or 1 x AA NiCd
Charging period	: NiMh batteries : 12 hours NiCd batteries : 10 hours
Capacity	: NiMh batteries 60 minutes NiCd batteries 40 minutes

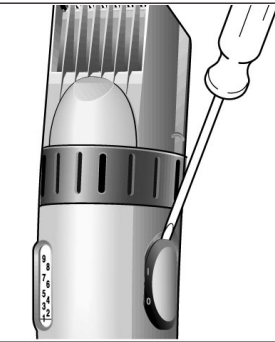
### NOTES :

- \* The charging stand can also be used to store the trimmer
- \* In order to guarantee the longest possible working life of the battery :
  - do not charge for more than 24 hours
  - do not keep the charging unit permanently plugged in
  - discharge the battery completely once a year by letting the motor run until it stops
- \* If the battery is empty and the consumer wants to trim his beard, the trimmer has to be charged for at least 1.5 hours to have enough power for one trim
- \* The appliance should be charged again, when not used for a long period

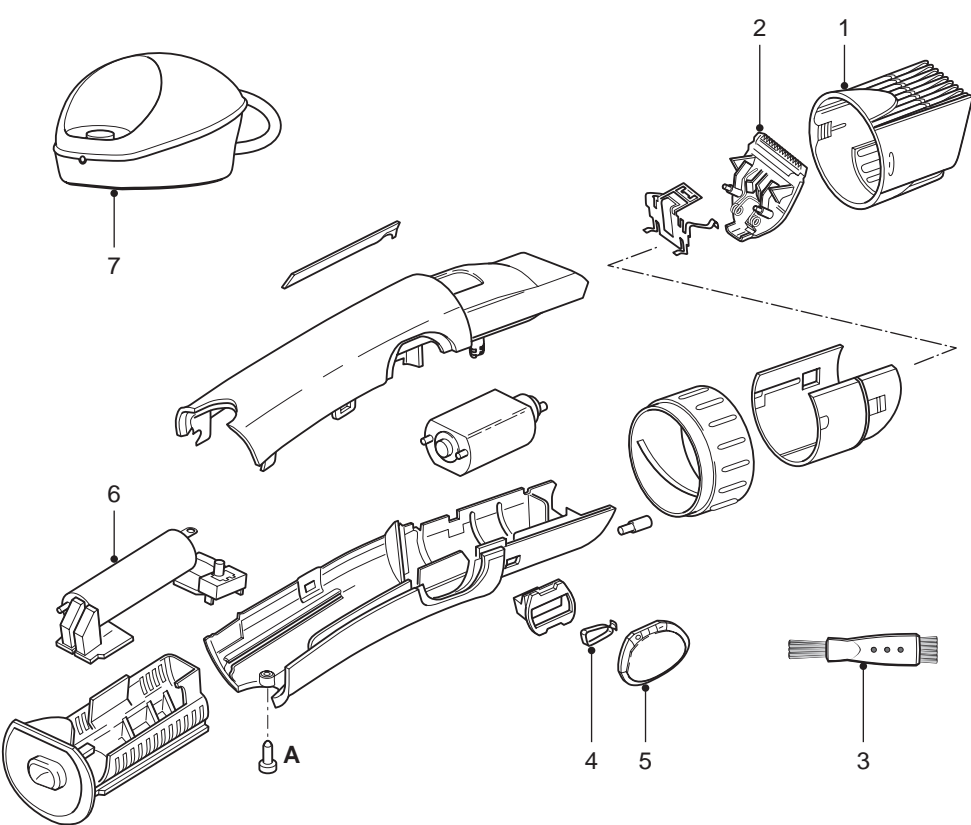
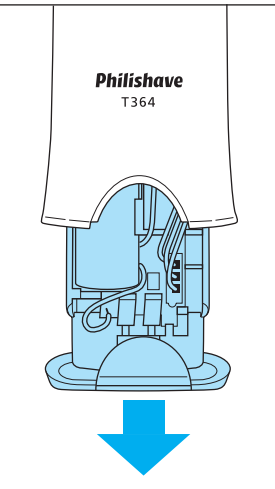
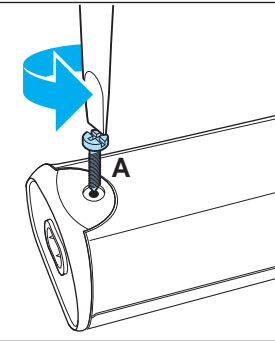
**Product meets the requirements regarding interference suppression on radio and TV.**



to replace **SPRING ON / OFF SWITCH (4)**

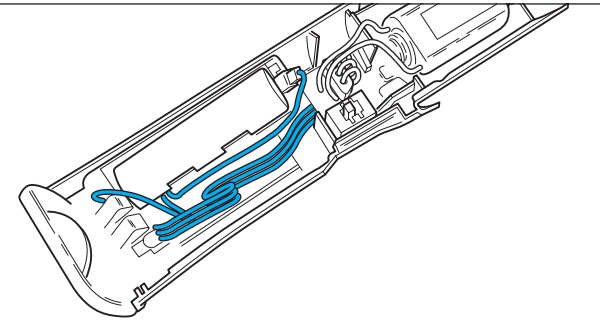


to replace **BATTERY (7)**  
remove **SCREW A**



Pos	Description	Service code
1	comb	4822 690 10171
2	cutter	4822 690 10174
3	cleaning brush	4822 479 30183
4	spring on/off switch	4822 492 71508
5	slide on/off switch	4822 277 11808
6	battery NiMh	4822 138 10551
	battery NiCd	4822 138 10336
7	adapter NiCd USA	4822 219 10284
	adapter NiCd CND	4822 219 10285
	adapter NiCd JPN	4822 219 10286
	adapter NiCd EURO	4822 219 10311
	adapter NiMh EURO	4822 219 10312
	adapter NiCd UK	4822 219 10313
	adapter NiCd Taiwan	4822 219 10315
	adapter NiCd Korea	4822 219 10316
	adapter NiCd Australia	4822 219 10314

Before reassembling the battery holder, make sure that the internal wiring is guided as shown in figure 1.



After the product has been repaired, it should function properly and has to meet the safety requirements as laid down and officially established at this moment.

Figure 1