

Service
Service
Service



Philips Domestic Appliances and Personal Care

Service Manual

PRODUCT INFORMATION

Features :

- Contour Tracking System; comb adapts to the contours of the face.
- Precision Zoom Lock; for precise adjustability of the comb in 9 lengths between 1.5 mm and 18 mm.
- Beard length indication window.
- Pop-up precision trimmer for moustache and contouring.
- Corded mains operation and cordless rechargeable operation possible.
- Charging indication.
- Maintenance free cutting element: no oiling required.
- Three dimensional rounded teeth at skin side for max. comfort.

TECHNICAL DATA

Power system : 1 hour rechargeable and mains

Rechargeable:

Batteries : 1 x AA NiCd
 Charging period : NiCd batteries: 1 hour
 Capacity : NiCd batteries: 40 minutes
 Batteryfull indication : light blinks when battery is fully charged

Mains:

Voltage : Automatic voltage selection
 (100 - 240 V / 50 - 60 Hz)

NOTES :

- * In order to guarantee the longest possible working life of the battery :
 - do not charge for more than 24 hours
 - do not keep the charging unit permanently plugged in
 - discharge the battery completely once a year by letting the motor run until it stops
- * If the battery is empty and the consumer wants to trim his beard, the trimmer has to be charged for at least 1.5 hours to have enough power for one trim
- * The appliance should be charged again, when not used for a long period

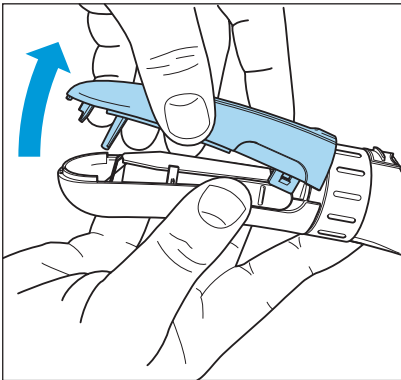
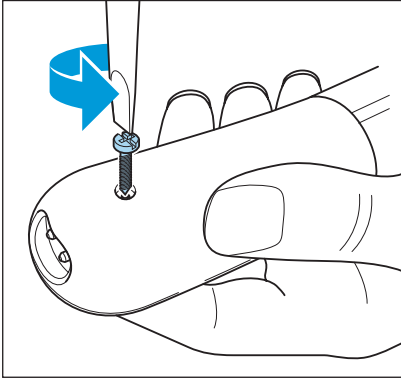
Product meets the requirements regarding interference suppression on radio and TV.



DISASSEMBLY ADVICE + PARTS LIST HQ-T 788

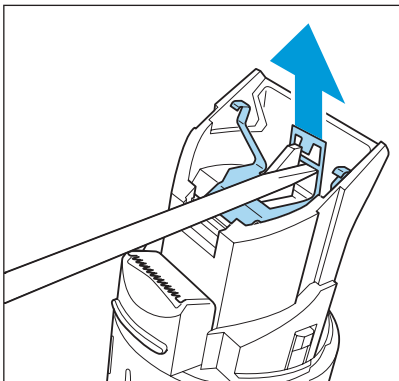
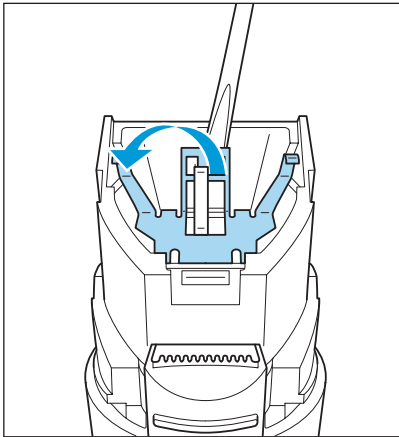
to replace **SPRING ZOOM RING (6)**

remove **COMB (1)**
SCREW A
COVER (7)
PROFILER (12)
COMB HOLDER (4)
ZOOM RING (5)



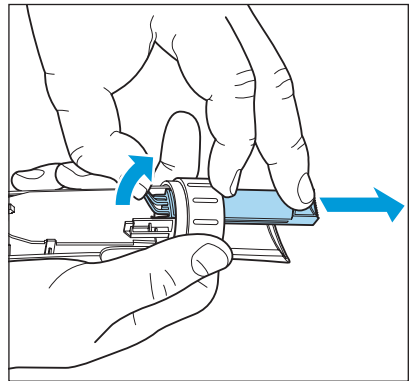
to replace **ON / OFF KNOB (8)**
BATTERY (10)
PCB (9)
MOTION CONVERTER (11)

remove **COMB (1)**
CUTTER (2)
HOUSING CLAMP (3)
COMBHOLDER (4)
SCREW A
COVER (7)
ZOOM RING (5)
PROFILER (12)
CAP B



to replace **PROFILER (12)**

remove **COMB (1)**
SCREW A
COVER (7)



Never use again a deformed housing clamp (3).

After the product has been repaired, it should function properly and has to meet the safety requirements as laid down and officially established at this moment.

pos	description	service code
1	comb	4203 035 76430
2	cutter	4203 035 76420
3	housing clamp	4203 035 76410
4	comb holder	4203 035 76360
5	zoomring	4203 035 76350
6	spring zoom ring	4203 035 71380
7	cover	4203 035 76720
8	on/off knob	4203 035 76470
9	PCB	4203 035 76490
10	battery NiCd	4822 138 10336
11	motion converter	4203 035 76480
12	profiler	4203 035 76460
13	cleaning brush	4822 479 30183
14	cord set (EURO)	4822 321 10095
	cord set (UK)	4822 321 10096
	cord set (CND)	4822 321 10097
	cord set (AUS/NZ)	4822 321 10148
	cord set (USA)	4822 321 10344

EXPLODED VIEW HQ-T 788

