

Service
Service
Service



Philips Consumer Lifestyle

Service Manual

PRODUCT INFORMATION

- Product meets the requirements regarding interference suppression on radio and television.
- After the product has been repaired, it should function properly and has to meet the safety requirements as laid down officially established at this moment.

TECHNICAL INFORMATION

- Power consumption : 600 W
- Voltage and frequency : 220 - 240 V / 50 - 60 Hz
- Normal Speed unloaded : 13.500 rpm
- Turbo Speed unloaded : 15.000 rpm

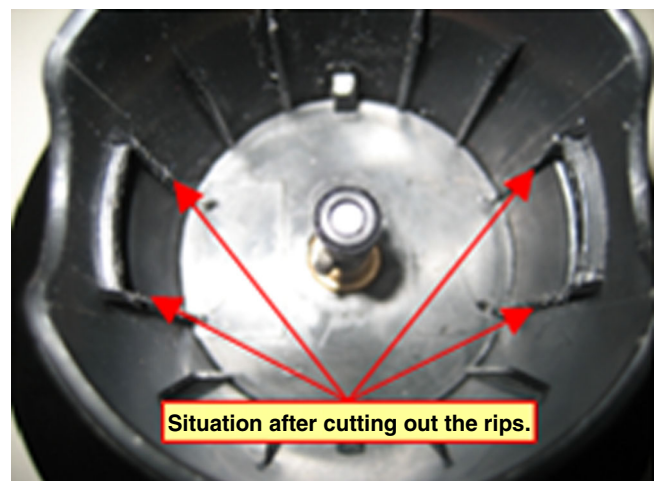
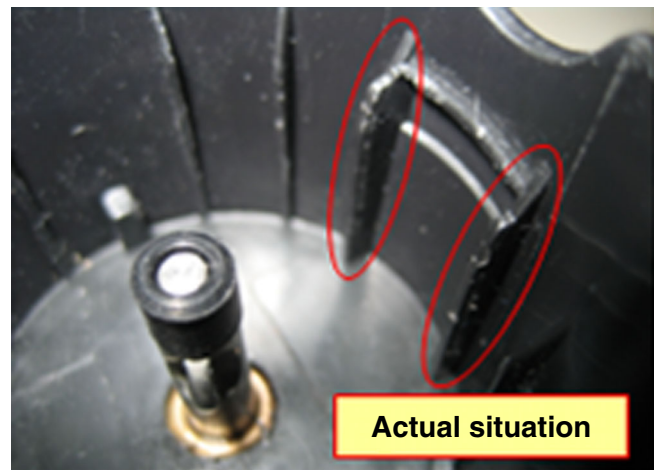
DISASSEMBLY- AND RE-ASSEMBLY ADVISE

- No specific issues.

OPTIONAL (accessories)

- No specific issues.

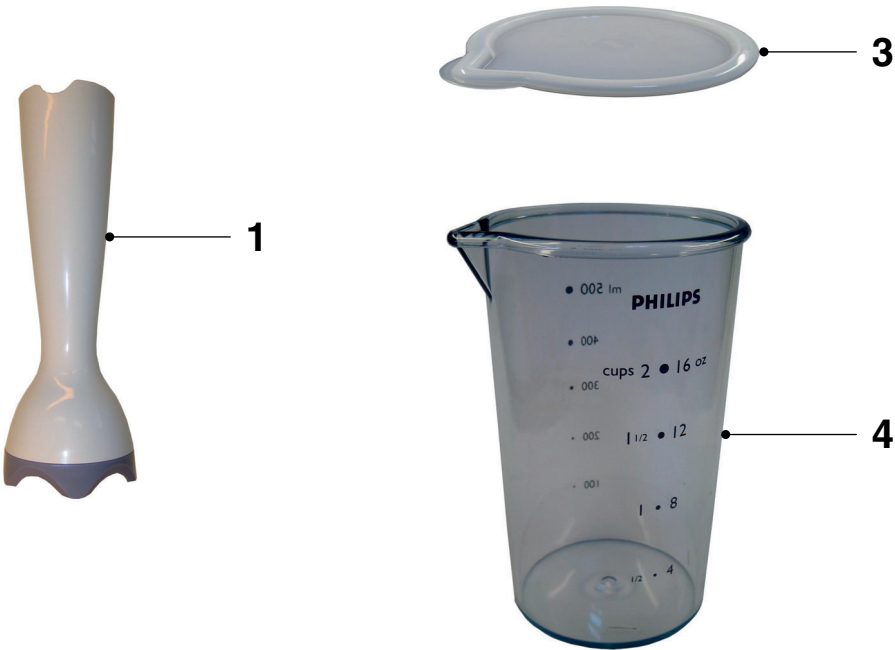
How to make “new” accessories of HRI36x and HRI37x compatible to older appliances of these types



Actual Power unit

Old Power unit





Pos	Service code	Description
1	4203 035 85550	Blender Bar
3	4203 065 51260	Beaker Lid 0,5 L
4	4203 065 66450	Beaker 0,5 L