

Service
Service
Service



Philips Consumer Lifestyle

Service Manual

PRODUCT INFORMATION

- Product meets the requirements regarding interference suppression on radio and television.
- After the product has been repaired, it should function properly and has to meet the safety requirements as laid down officially established at this moment.

TECHNICAL INFORMATION

- Power consumption : 600 W
- Voltage and frequency : 220 - 240 V / 50 - 60 Hz
- Normal Speed unloaded : 13.500 rpm
- Turbo Speed unloaded : 15.000 rpm

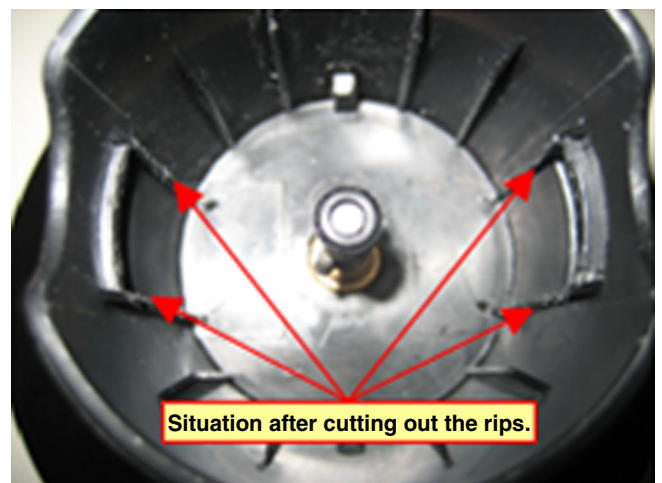
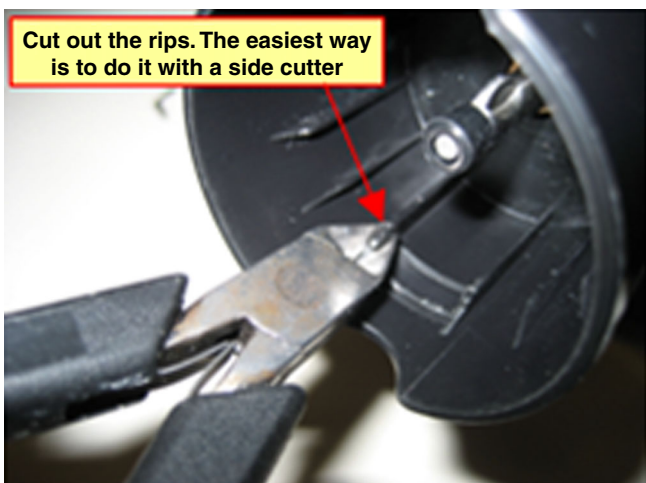
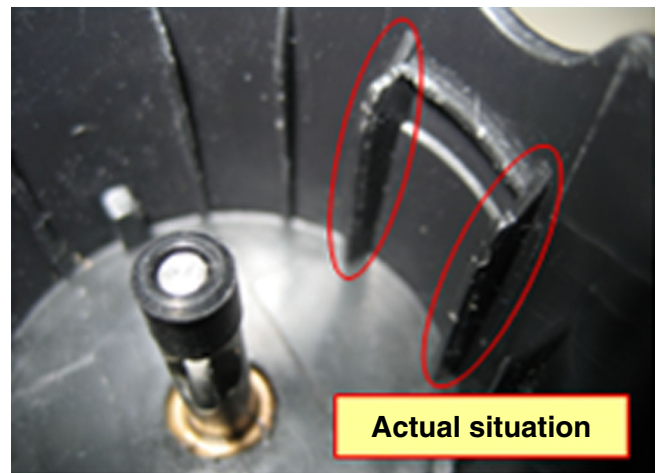
DISASSEMBLY- AND RE-ASSEMBLY ADVISE

- No specific issues.

OPTIONAL (accessories)

- No specific issues.

How to make “new” accessories of HRI36x and HRI37x compatible to older appliances of these types



Actual Power unit

Old Power unit





Pos	Service code	Description
1	4203 035 85550	Blender Bar new
2	4203 035 85560	Whisking Accessory
3	9965 000 39157	Beaker Lid
4	9965 000 39158	Beaker 1,0 L
5	4203 035 85570	Chopping Interface
6	9965 000 39161	Chopping Knife
7	9965 000 39162	Chopping Bowl

Only for Argentina / Turkey market:

Pos	Service code	Description
8	4203 035 90840	Motor Assy + Coupling
9	4203 035 90850	Print Plate Assy + Switch activation
10	4203 035 91470	Knobs and Spring Knobs
11	4203 035 91660	Screw Caps (2x) (Not shown)
		Power Unit Assy incl. Cordset (Turkey)

■ = changed