

**Philips Consumer Lifestyle**

# Service Manual

**PRODUCT INFORMATION**

- This product meets the requirements regarding interference suppression on radio and TV.
- After the product has been repaired, it should function properly and has to meet the safety requirements as officially laid down at this moment.

**TECHNICAL INFORMATION**


- Power consumption : 700 W
- Voltage and Frequency : 220 - 240 V / 50 - 60 Hz
- Vario Speed unloaded : from 8.000 rpm to 15.000 rpm
- Turbo Speed unloaded : 18.000 rpm
- Volume size:
  - Large chopper : max. 700 ml

**DISASSEMBLY- AND RE-ASSEMBLY ADVISE**

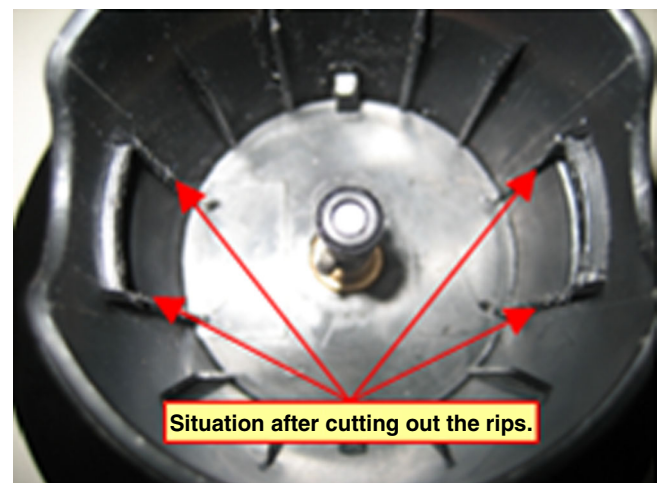
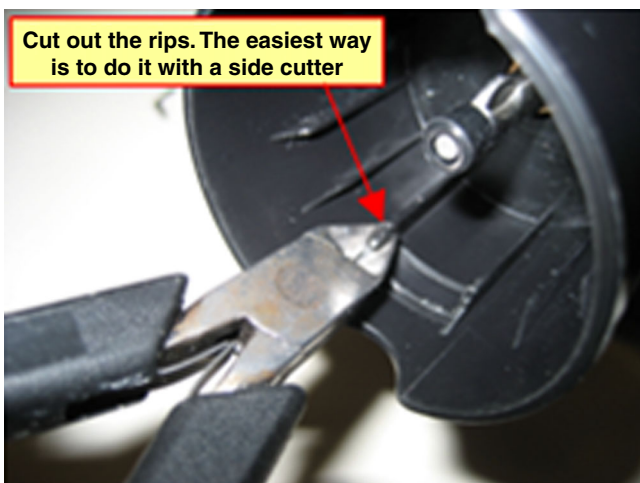
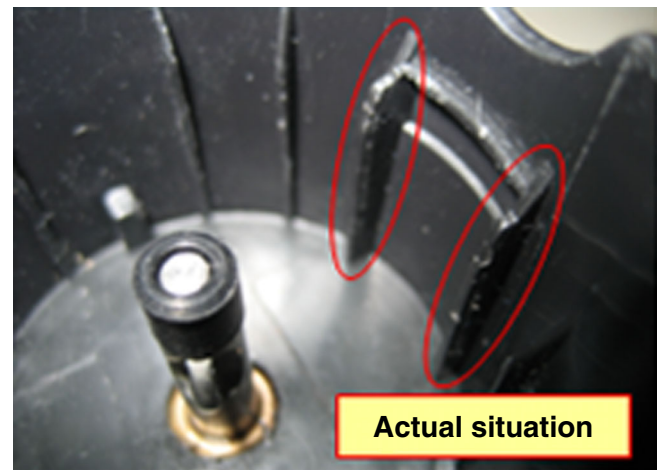
- No specific issues

**OPTIONAL (accessories)**

- No specific issues

 = changed

How to make “new” accessories of HRI36x and HRI37x compatible to older appliances of these types



Actual Power unit

Old Power unit





Pos	Service code	Description
1	4203 035 84460	Blender Bar new
2	4203 065 66350	Beaker incl. Lid
3	4203 035 85620	Chopping Interface large
4	4203 035 54100	Chopping Knife large
5	4203 035 54120	Chopping Bowl large