

Service
Service
Service



HR 1560
HR 1560/B
HR 1561
HR 1561/B

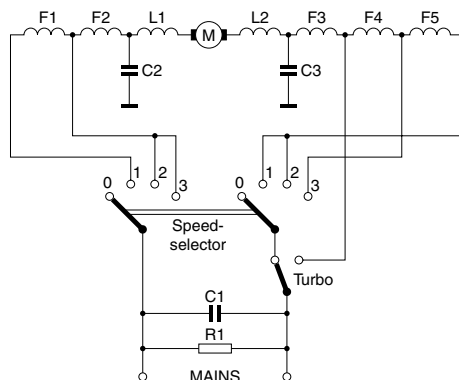
Philips Domestic Appliances and Personal Care

Service Manuals 4322 277 00372 and 4322 277 00375
are herewith cancelled

Service Manual

PRODUCT INFORMATION

HR 1560/61	: 3 speed mixer + turbo
HR 1560/61/B	
Weight appliance	: 1000 gr
Colour appliance	: Ivory - Blue
Dimensions	: 180 x 90 x 160 mm
Motor	: Series wound Statically and dynamically balanced Self lubricated
Transmission ratio between rotor spindle and gearwheel	: 21½ : 1
Power HR 1560/61	: 220 Watt 220-240 V, 50-60 Hz
HR 1660/61/B	: 350 Watt 220-240 V, 50-60 Hz
Cordlength	: 1,5 m
Speeds beaters	: Switch position 1 860 rpm Switch position 2 750 rpm Switch position 3 900 rpm Turbo position 1000 rpm



SERVICE INFORMATION

Mounting gearwheels

When mounting the gearwheels make sure that the cams of the gearwheels are situated at the front of the beaters. The angle between the beaters must 45°.

So when carrying out a repair be sure that the gearwheels are mounted correctly (see Fig. 1).

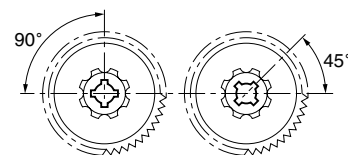


Fig. 1

Lubrication

Use graphite grease code no. 4822 390 20004 to grease the appliance on the following points:

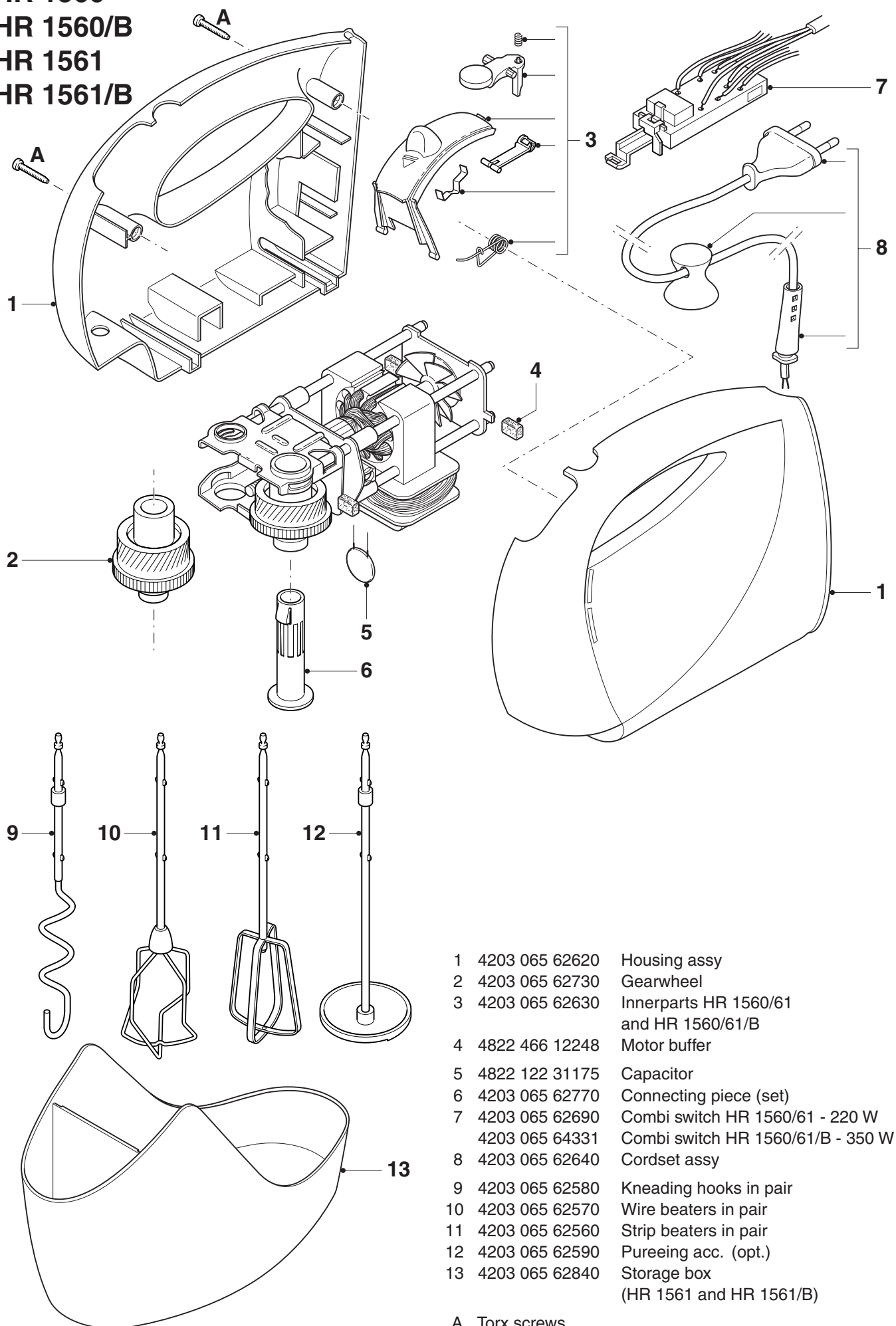
1. Spaces between the teeth of the wormwheels.
2. Both sides of the wormwheel shaft.

Motor

The motor cannot operate properly when, due to contamination, carbon brush is unable to move freely in guide bush and consequently cannot be pressed against the commutator.

Type plate : **HR 1560/61**
or
HR 1560/61/B

HR 1560
HR 1560/B
HR 1561
HR 1561/B



- | | | |
|----|----------------|--|
| 1 | 4203 065 62620 | Housing assy |
| 2 | 4203 065 62730 | Gearwheel |
| 3 | 4203 065 62630 | Innerparts HR 1560/61 and HR 1560/61/B |
| 4 | 4822 466 12248 | Motor buffer |
| 5 | 4822 122 31175 | Capacitor |
| 6 | 4203 065 62770 | Connecting piece (set) |
| 7 | 4203 065 62690 | Combi switch HR 1560/61 - 220 W |
| | 4203 065 64331 | Combi switch HR 1560/61/B - 350 W |
| 8 | 4203 065 62640 | Cordset assy |
| 9 | 4203 065 62580 | Kneading hooks in pair |
| 10 | 4203 065 62570 | Wire beaters in pair |
| 11 | 4203 065 62560 | Strip beaters in pair |
| 12 | 4203 065 62590 | Pureeing acc. (opt.) |
| 13 | 4203 065 62840 | Storage box (HR 1561 and HR 1561/B) |

A Torx screws