



Philips Domestic Appliances and Personal Care

Service Manual

PRODUCT INFORMATION

HR1720/AC = Basic Blender
 HR1721/AC = HR1720/AC + Mill accessory HR2944
 HR1724/AC = HR1720/AC + Soyabean / Fruitfilter HR2938
 HR1727/AC = HR1720/AC + Mill accessory HR2944
 + Soyabean / Fruitfilter HR2938

TECHNICAL INFORMATION

- Motor power : 350 W
- Voltage : 220 - 240 V / 50 - 60 Hz
110 - 120 V / 50 - 60 Hz
- Speeds : 2 speed + pulse
speed 1 unloaded : 16000 rpm
speed loaded : 19000 rpm
(= pulse)
- Blender jar capacity : 1.5 l total - 1.25 l effective
- Dimensions F-box : 340 x 195 x 280 mm
- Weight : 1.77 kg

Materials used:

- Jar : Plastic
- Housing : PP
- Blade : Stainless steel

DISASSEMBLY- AND RE-ASSEMBLY ADVISE

- For disassembly- and re-assembly of the motor, see page 3-3

REPAIR INSTRUCTIONS

Inspection after repair:

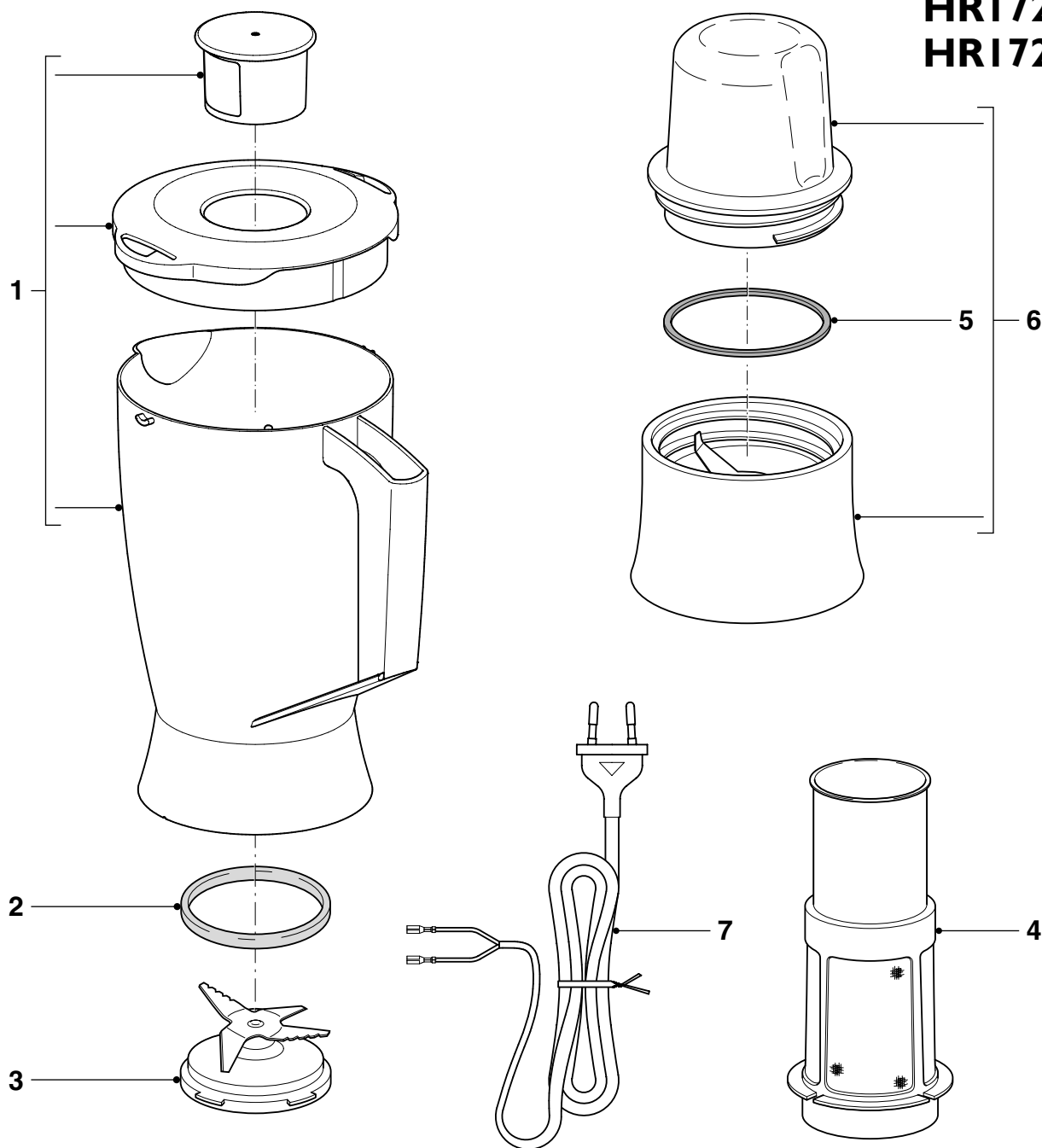
Test the safety interrupter by mounting and dismounting the blender jar, while the appliance is switched on.

OPTIONAL (accessories)

- No specific issues

PARTS LIST + EXPLODED VIEW

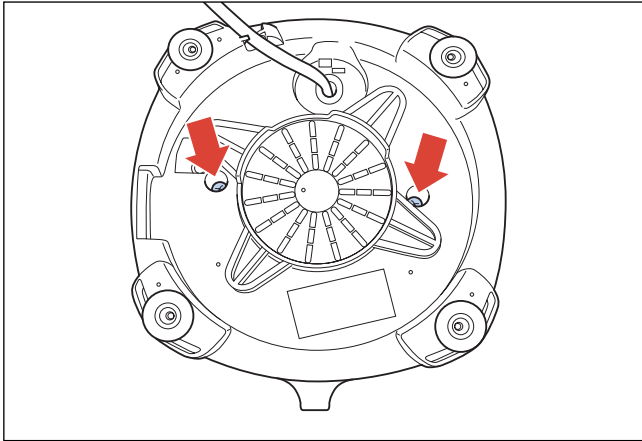
HR1720/AC
HR1721/AC
HR1724/AC
HR1727/AC



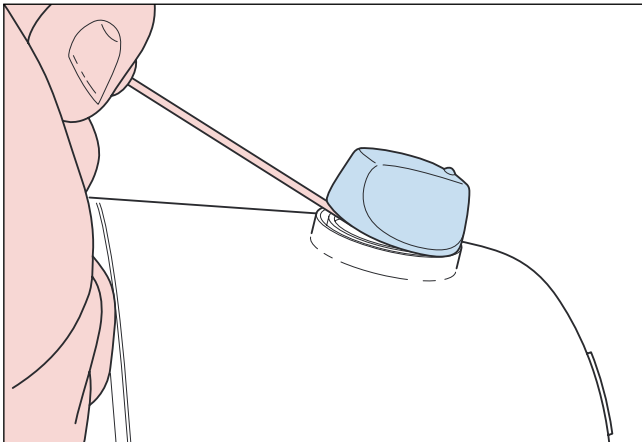
Pos	Service code	Description
1	9965 000 23147	Blender jar assy
2	9965 000 23151	Sealing ring - blender knife assy
3	9965 000 23152	Blender knife assy
4	9965 000 23158	Soyabean filter assy (HR1724 + HR1727)
5	9965 000 23156	Sealing ring - mill assy (HR1721 + HR1727)
6	9965 000 23157	Mill assy (HR1721 + HR1727)
7	9965 000 23153	Cordset - EU
7	9965 000 23154	Cordset - China
7	9965 000 23155	Cordset - Taiwan
10	9965 000 26688	Motor 220-240 V / 50-60 Hz (see next page)
	9965 000 26689	Motor 110-120 V / 50-60 Hz (see next page)

DISASSEMBLY- AND RE-ASSEMBLY ADVISE

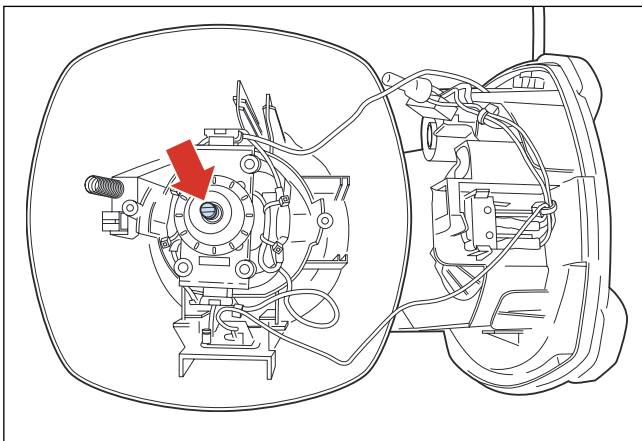
HRI720/AC
HRI721/AC
HRI724/AC
HRI727/AC



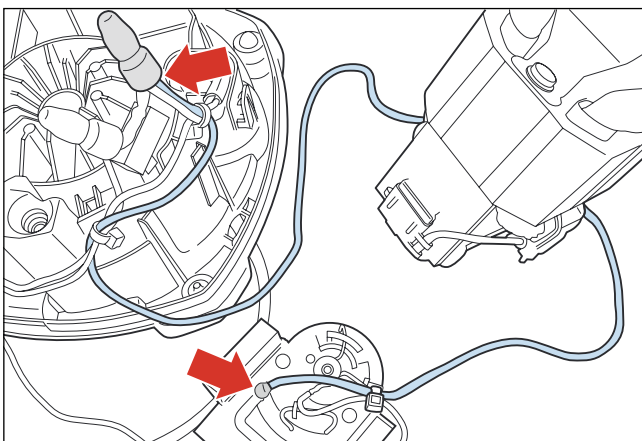
- Unplug the appliance from the mains!
- Unscrew the two Phillips screws.



- Remove the switch knob by using a screw driver.



- Unscrew the blender coupling (left-handed thread!) by holding the motor axle with a slotted screwdriver.



- Disconnect the two motorwires from the soldered point on the switch and from the crimped connection to the mains cord.
- To reassemble the appliance, do the steps backwards.