



Philips Domestic Appliances and Personal Care

# Service Manual

MSH coding 8834 342 00000

## PRODUCT INFORMATION

### GENERAL

The HR 4342 is suitable for rooms / areas with a floor surface of up to approx. 40 m<sup>2</sup>.

The air cleaner cleans the air effectively by catching 90% of the gases and 95% of the particles produced by smoking.

This is done by 3 filters :

- Foam pre-filter : The foam pre - filter catches the larger dust particles floating in the air such as fluff and hairs.
- HEPA filter HR4940 : This filter takes out all smaller airborne particles.
- Carbon filter : The carbon filter with activated carbon granulates (HR4941) effectively absorbs the smoke gases.

**This Product meets the requirements regarding interference suppression on radio and T.V.**

## FEATURES

**Speed control:** With 3 speed settings.

**Safety lock:** Prevents the customer from opening the front cover whilst the air cleaner is switched on.

The front cover can only be opened, if the switch has been set to the "0" position.

**Over heating safety device:** The overheating safety device comes into operation when the motor becomes too hot. To indicate that the appliance is still in "ON" position and connected to the mains, the pilot light remains on.

If this happens :  
 – Switch off the motor.  
 – After approx. 15 min. the air cleaner can be switched on again.

## TECHNICAL DATA

Voltages	: 220 - 240 Volt	: 60 Watts
Filters	: 2 carbon filters	
Life time filters	: carbon filters	: 3 months
	Hepa filter	: 6 months
Flow rate	: 160 m <sup>3</sup> /hr	
Surface filter surface	: 1 m <sup>2</sup>	
Room / area size	: Max. 40 m <sup>2</sup>	



## POSSIBLE COMPLAINTS

### 1) The motor makes an irritating noise.

- Check if :
- The carbon filters are positioned properly in the air cleaner.
  - : – The filters have to be cleaned or replaced.
  - : – The fan has been properly fitted and can be rotated freely by hand.

### 2) The overheating device comes into operation.

- Check :
- If the filters are blocked and nothing is obstructing the air inlet and air outlet openings.
  - : That the fan has been fitted properly and can rotated freely by hand.

In case these problems still remains, replace the motor (item 13) and belonging buffers (item 13A).

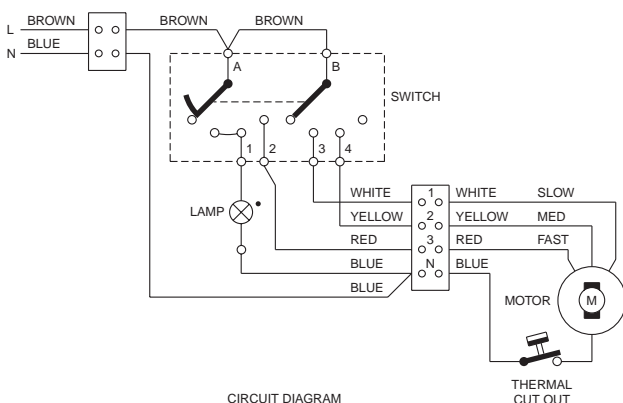
## MAINTENANCE

**Pre-filter** : Wash or vacuum clean the foam pre-filter at least every 2 months.  
Fluff and /or hairs can also be removed by using a soft brush.  
Replacement filters are available under service code 4822 480 10086

**NEVER USE WET FILTERS.**

**HEPA filter** : For a proper operation, replace this filters at least every six months.  
Replacement HEPA filters are available under type number HR 4940 and service code 4822 480 10085.

**Carbon filter** : Replace the carbon granules at least every 3 months.  
New carbon granules are available under type number HR 4941 and service code 4822 390 10139



## PARTS LIST HR 4342/A

POS.	DESCRIPTION	SERVICE CODE
1	Front cover white	4822 458 10673
	Front cover grey	4822 458 10674
2	Carbon container	4822 418 10132
3	HEPA filter HR 4940	4822 480 10085
4	Control panel white	4822 466 12195
	Control panel grey	4822 466 12196
5	Switch knob white	4822 310 11289
	containing : switch knob	5
	spring	101
5	Switch knob purple/grey	4822 310 11302
	containing : switch knob	5
	spring	101
6	Safety lock	4822 310 11291
	containing : interlock slide	6
	interlock spring	102
7	Neon assy	4822 310 10969
	containing : neon light	7
	lens	103
8	Rotary switch	4822 273 10367
9	Top grill white	4822 458 10672
	Top grill grey	4822 458 10675
10	Front housing white	4822 310 11303
	containing : front housing	10
	hole plug	105
	foot (2x)	107
10	Front housing grey	4822 310 11304
	containing : front housing	10
	hole plug	105
	foot (2x)	107
11	foam	4822 480 10086
12	Fan assy	4822 310 10973
	containing : fan	12
	lock washer	108
	M6 shakeproof washer	109
	nut M6 hex. zinc. plate	110
	nut cover hexagone	111
13	Motor	4822 361 11162
13A	Motor buffer	4822 310 10981
	containing : motor mounting	112
	retaining bracket	113
	spacer	115
14	Back housing white	4822 310 11305
	containing : back housing	14
	foot (2x)	107
14	Back housing grey	4822 310 11306
	containing : back housing	14
	foot (2x)	107
15	Motor cover white	4822 442 01752
15	Motor cover grey	4822 442 01755
16	Carbon granules HR 4941	4822 390 10139

**D.F.U. Europa** 4822 736 16823

**D.F.U. Rest of the world** 4822 736 16864

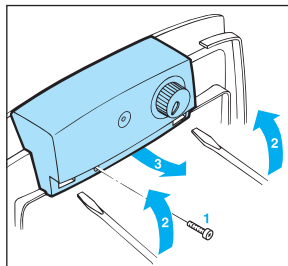
Parts, with numbers from 100 and higher, cannot be ordered separately.

## DISASSEMBLY ADVICE

remove **Front cover 1**  
 remove **Carbon containers 2**  
 remove **Hepa filter 3**

### CONTROL PANEL 4

remove **Screw A-1**  
 remove **Panel 4**



### SWITCH KNOB 5

### SAFETY LOCK 6

### PILOT LAMP 7

### SWITCH 8

### FRONT HOUSING 10

### FAN 12

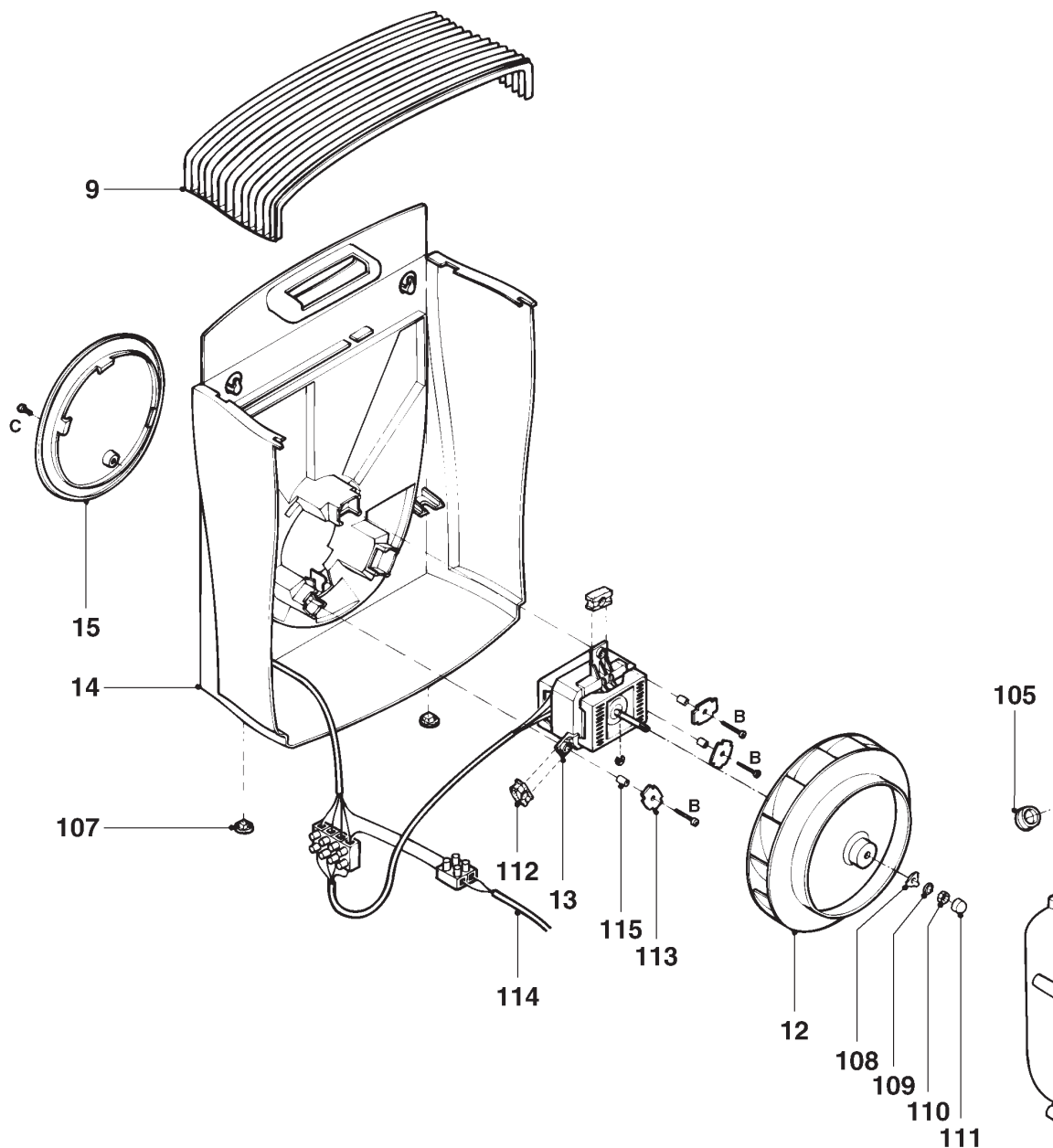
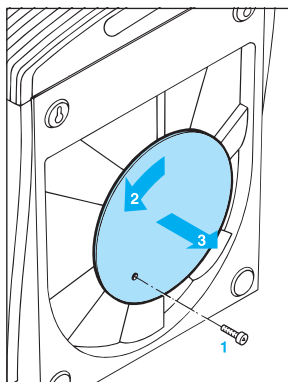
### MOTOR 13

remove **Front cover 1**  
 remove **Screw A (4 x)**  
 remove **Panel 4** (See above)  
 remove **Screw A-2**  
 remove **Front housing 10**

### CORDSET 114

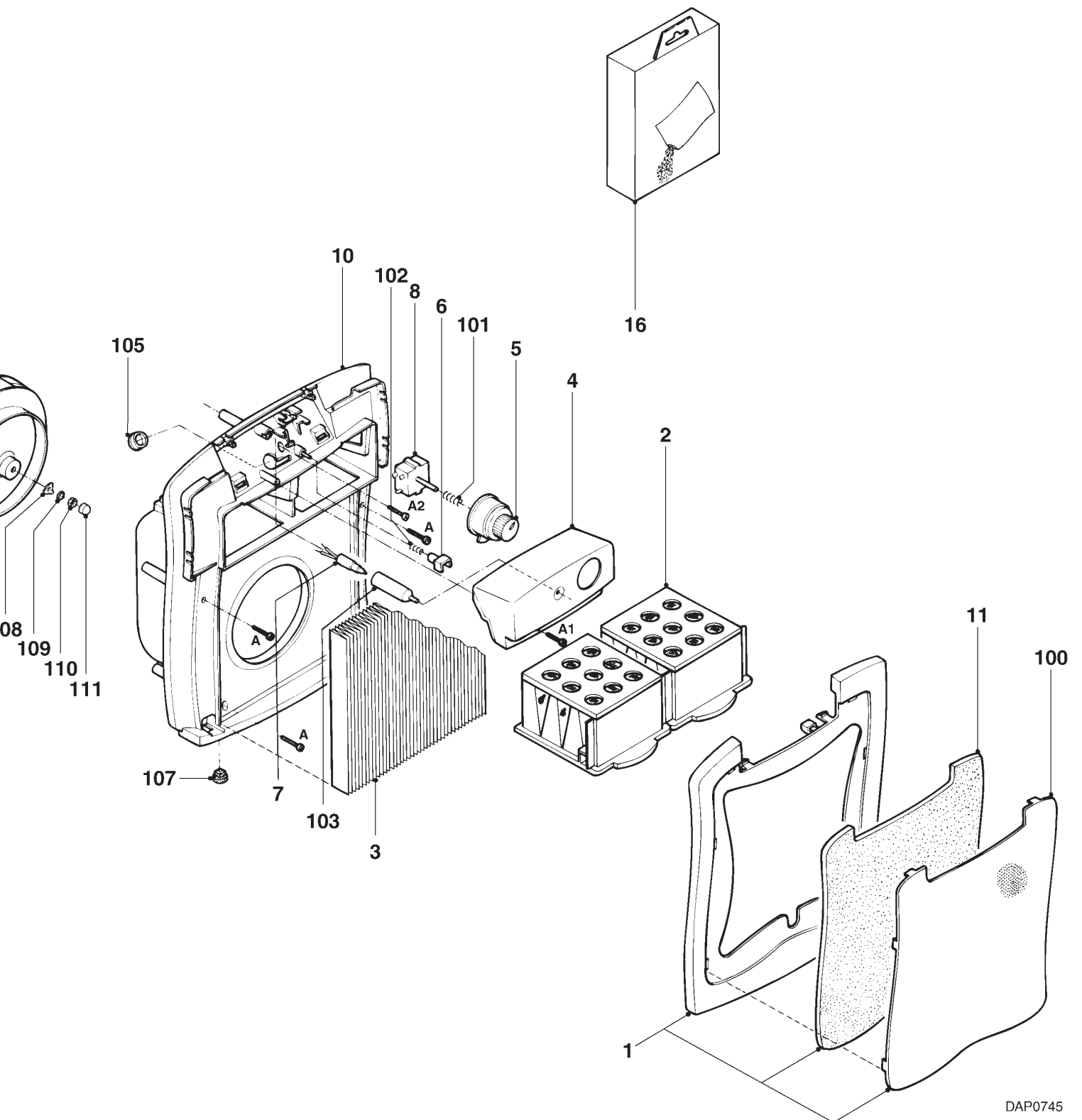
### REAR COVER 15

remove **Screw C**  
 remove **Cover 15**



**NOTE :** After the product has been repaired, it should function properly and has to meet the safety requirements and legal regulations as laid down and officially established at this moment.

SCREWS : A, A-1, A-2 : 3.5 x 16 (6x)  
 B : 3.5 x 25 (3x)  
 C : 3.5 x 16 TRI-WING



DAP0745