



Philips Consumer Lifestyle

Service Manual

PRODUCT INFORMATION

Features

- Click & Go
- Powerful (800 W)
- Large bowl
(3,6 L dry, 1,8 L liquid capacity)
- Easy Clean button
- 2 speeds and pulse function
- Graphics on the appliance
- Suction feet
- Cord Storage
- : Easy assembly and disassembly system.
- : Capable of handling even the toughest tasks.
- : Capable of processing large batches at once.
- : Easy cleaning of chopper bowl, which is also dishwasher safe.
- : Optimally adjusting the speed to the job.
- : Quickly choosing the right accessory for the job.
- : Keeping the appliance perfectly stable and safe during operation.
- : Adjusting the cord length to the specific situation.

Accessories

- Extra thick, break resistant Blender Jar
(2,0 L dry, 1,5 L liquid capacity)
- Stainless steel metal blade
- Plastic insert holder
- Stainless steel slicing insert medium
- Stainless steel shredding insert medium
- Stainless steel shredding insert fine
- Stainless steel granulating disc
- Plastic kneading accessory
- Metal balloon beater
- Citrus press
- Plastic pusher
- : Blending, pureeing and shaking of fruits, dairy, batters, soups, vegetables, meat and fish.
- : Chopping, blending, pureeing, and mixing of meat, fish, vegetables, dairy, fruits and nuts.
- : Disc-shaped space-saving tool holder for different inserts.
- : Slicing vegetables and fruits.
- : Shredding vegetables, fruits and cheese.
- : Shredding vegetables, fruits and cheese very fine.
- : Granulating vegetables and fruits.
- : Kneading all kinds of dough (up to 1,3 kg dough) and mixing cake batters (up to 0,8 kg of batter).
- : For all kinds of whipping, whisking and emulsifying jobs.
- : For making large quantities (1,8L) of citrus juice in a short time.
- : Pushing the ingredients in the bowl during the process.
- : The pusher has a hole, so that oil can gradually be added.

Safety

- Automatic resettable thermal cut off
- Built-in safety lock
- Brake system
- : Protecting the motor against overheating.
- : Detects whether lid & bowl are assembled.
- : Stops the accessories within 1,5 seconds.

TECHNICAL INFORMATION

HR7740/80

- Motor : Universal, radio/TV interference suppressed
- Power consumption : 800 Watt max
- Voltage and frequency : 220 V - 240 V, 50 Hz
- Cord set : 100 cm, double insulated with moulded on plug
- Speed setting : 2 speeds & pulse
- Bowl capacity : 3,6 L dry ingredients, 1,8 L liquid ingredients
- Blender capacity : 2,0 L dry ingredients, 1,5 L liquid ingredients

Materials used

- Bowl, lid, blender jar, blender cup, safety cap : SAN
- Housing, blender lid, pusher, inlay bowl and blender handle, citrus press (sieve and cone), kneading accessory : PP
- Balloon Beater : Metal Balloon, POM housing
- Insert holder : ABS

Colours

- White with orange and yellow accents, clear transparent bowl and jar.


Preliminary data	No. of pcs	Weight (kg)	Dimensions (mm)
- F-box	1	5,90	390 x 290 x 400

Please be informed, that due to a change at the motor (Pos. 21) from week 626 onwards the new motors have only two wires, which have to be soldered to the PCB. The motors before week 626 had 5 wires. For soldering the 2 wires (red and the black coloured) to the PCB, please have a look on page 8 at „Soldering of Motor wires on PCB“.

PARTS LIST

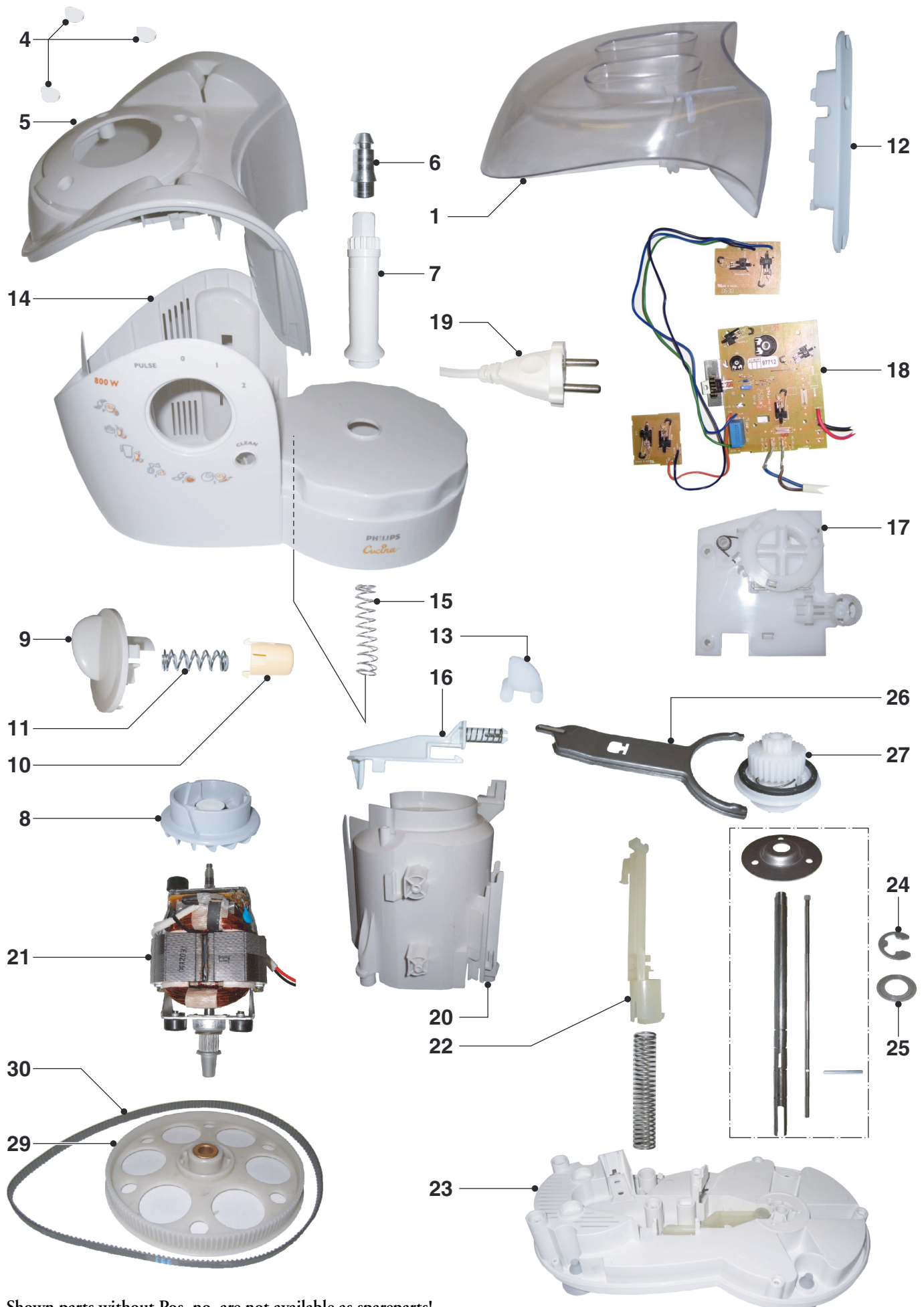
Pos	Service code	Description
1	4203 065 65480	Housing Cap
4	4203 065 65150	Screw cap (3 pcs.)
5	4203 065 65140	Housing Top
6	4203 065 65310	Coupling Toolholder
7	4203 065 65320	Toolholder
8	4203 035 85300	Blender Coupling
9	4203 065 65240	Power Knob
10	4203 065 65250	Quick Clean Knob
11	4203 065 65270	Spring - Quick Clean Knob
12	4203 065 65330	Cordset Holder
13	4203 065 65180	Detection Lever - Jar
14	4203 065 65360	Housing HR7740
15	4203 065 65390	Spring Bowl Detection
16	4203 065 65190	Horizontal Lever
17	4203 065 65220	PCB Frame Assy HR7730-40
18	4203 065 65210	PCB Assy HR7735-40
19	4203 065 64020	Cordset EU
	4203 065 64000	Cordset UK
	4203 065 65400	Cordset Swiss
20	4203 065 65170	Airtunnel
21	4203 065 65450	Motor Assy
22	4203 065 65290	Decoupling lever
23	4203 065 65300	Bottom Assy
24	4203 065 65780	Retaining Ring
25	4203 065 65770	Washer

Pos	Service code	Description
26	4203 065 65420	Coupling Fork
27	4203 065 65440	Coupling Assy
29	4203 065 65410	Toothed Wheel Assy
30	4203 065 65460	Belt
35	4203 065 65620	Pusher Chopper Bowl
36	4203 065 65610	Chopping Bowl Lid
37	4203 065 65630	Rubber Sealing Ring
38	4203 065 65600	Chopper Bowl
40	4203 065 65520	Citrus Press Cone
41	4203 065 65530	Citrus Press Sieve
45	4203 065 65560	Stopper lid - Jar
46	4203 065 65550	Jar Lid
47	4203 065 65540	Blender Jar Assy
50	4203 065 61540	Slicing Insert medium
52	4203 065 61560	Shredding Insert medium
53	4203 065 61550	Shredding Insert fine
54	4203 065 61570	Granulating Insert (Reibekuchen)
55	4203 065 65510	Insert Holder Assy
60	4203 065 93941	Balloon Beater Assy
62	4203 065 65500	Plastic Kneader
63	4203 065 65490	Chopping Knife Assy

 = changed

EXPLODED VIEW

HR7740/80



Shown parts without Pos. no. are not available as spareparts!

EXPLODED VIEW



HR7740/80





To repair something inside the foodprocessor:

1. Remove the screw of the cord holder.



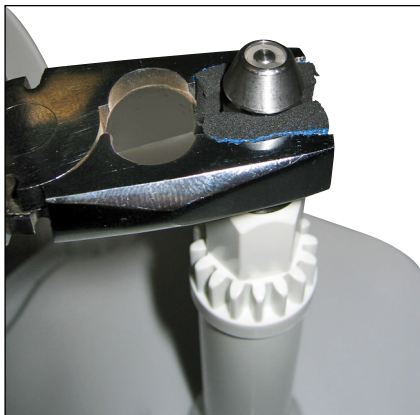
To remove the Top Housing:

1. Push a screwdriver through the 3 Screw Caps to remove them.
2. Use a screwdriver Torx T15 to remove the 3 screws from the Top Housing.

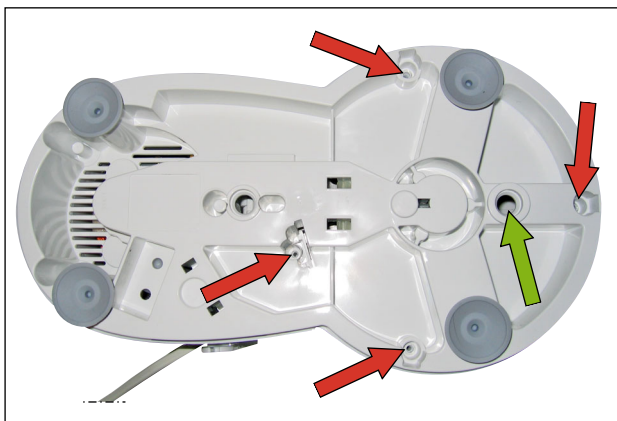


To remove the Housing:

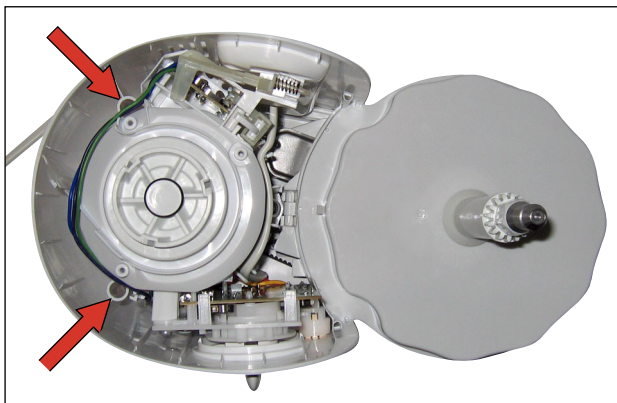
1. Remove the Toolholder coupling by turning it counterclockwise with protected tongs to prevent the coupling from damages (You can use e.g. foam rubber).



2. Remove the 4 screws on the bottomside of the foodprocessor.
The green arrow shows you the hole, where you can stick through a pin to fixate the acc. drive wheel, when you want to remove the blender coupling. After that you can turn the blender coupling clockwise 'for removing it.



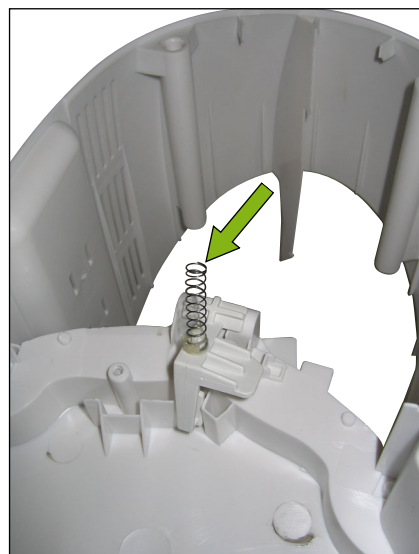
3. Remove the 2 last screws (marked with the red arrows).
After this you can remove the housing.



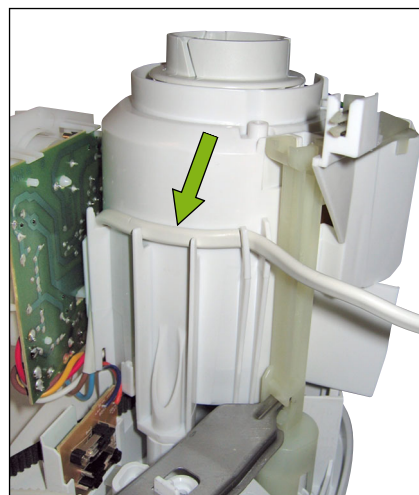
- In this situation, you could replace for example the cord set or the PCB.



- Be sure, that you don't loose the Spring – Bowl detection on the bottomside of the housing!

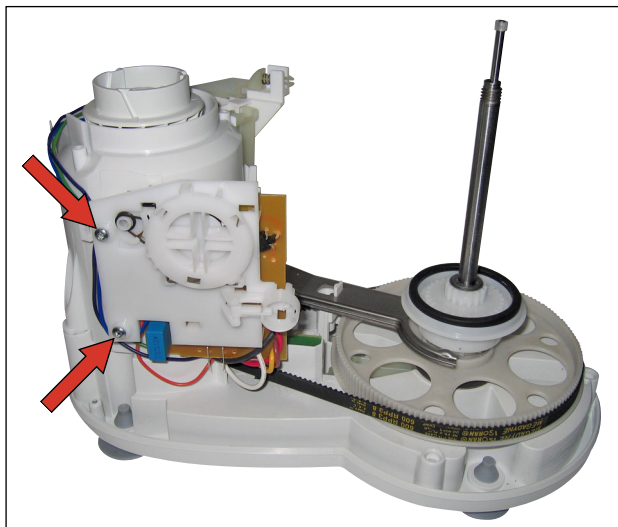


- Be sure, that a replaced cord set is also placed in the designed cable guide.



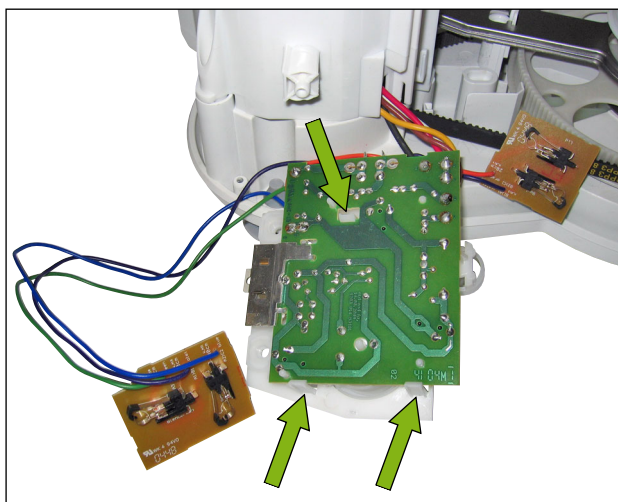
To remove the PCB's:

1. Remove the 2 screws to loosen the Main PCB.



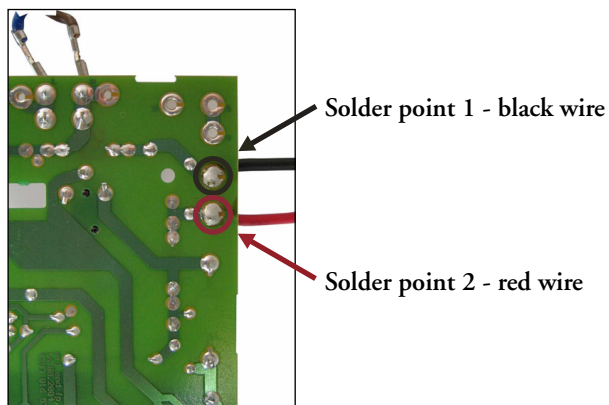
To remove the PCB Frame:

1. Release the 3 snaphooks, which hold the PCB on the frame.



Soldering of Motor wires on PCB:

- Here you can see the colours of the Motor wires and their soldering points on the PCB.



To remove the upper part of the coupling:

1. Remove the retaining ring with a screwdriver.



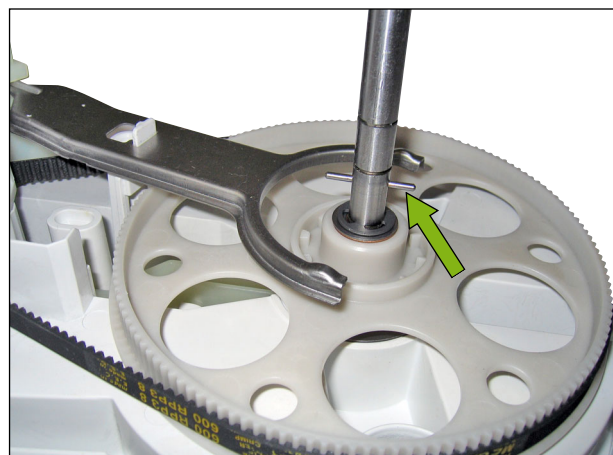
To remove the lower part of the coupling:

1. Remove the retaining ring with a screwdriver.



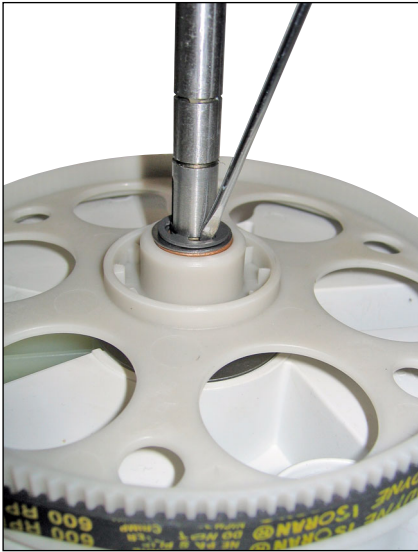
In this situation you can exchange for example the coupling fork.

If you want to exchange the toothed wheel, you have to remove the coupling fork and also the small axle from the „click & go“ system (green arrow).



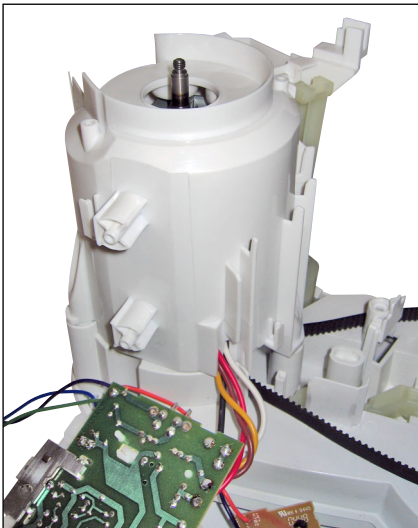
To remove the toothed wheel:

1. Remove the retaining ring with a screwdriver.



To replace the Motor:

1. Remove the 3 screws from the Airtunnel.



After removing the Airtunnel, you can exchange the motor, the belt or the belt tension.

