



Philips Domestic Appliances and Personal Care

Service Manual

PRODUCT INFORMATION

General:

- Rechargeable
- World wide automatic voltage selection
- Washable
- Charge indication
- Battery low indication
- Battery full indication
- Travel lock

Safety information

- This product meets the requirements regarding interference suppression on radio and TV.
- After the product has been repaired, it should function properly and has to meet the safety requirements as officially laid down at this moment.

TECHNICAL INFORMATION

- | | |
|-----------------|-------------------------------|
| - Voltage | : 100 - 240 Volt / 50 - 60 Hz |
| - Shaving heads | : HS85 |
| - Charging time | : 4 hours |
| - Shaving time | : 40 minutes |
| - SAP coding | : HS8040 |

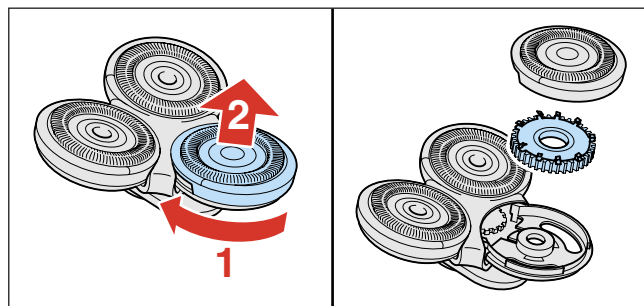
DISASSEMBLY- AND RE-ASSEMBLY ADVICE

- Remove shaving unit, to prevent damaging during repairing.
- Remove the 2 screws on top of the shaver.
- Remove the additive tubes and the IM cap.

REPAIR INSTRUCTION

Cleaning shaving heads

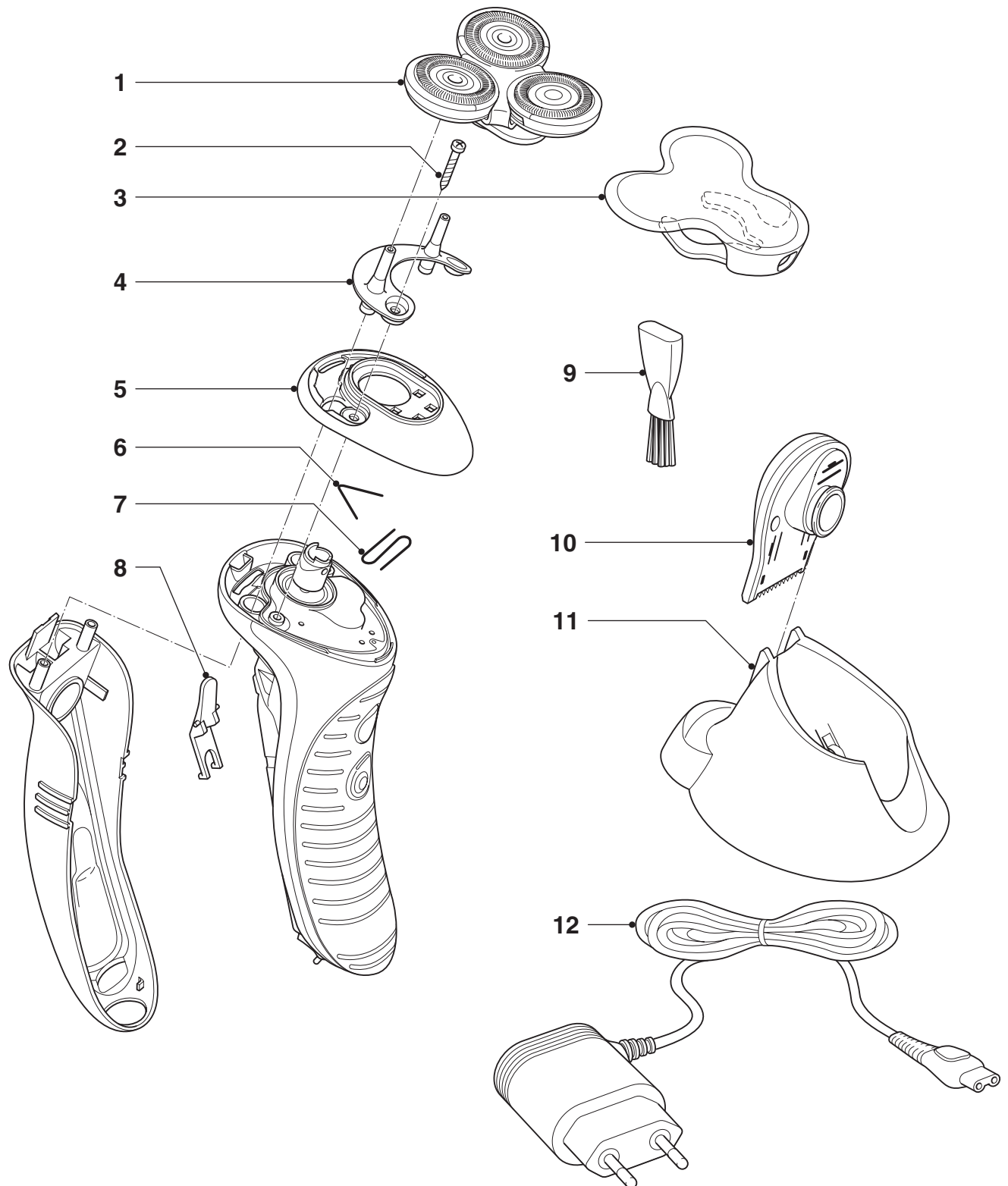
- Turn head clockwise and take off.
- Take cutter out and clean it with the brush.



- Place cutter back.
- Place head back and fix it by turning the head anticlockwise.

OPTIONAL (accessories)

- Pouch : 4222 036 14360



Pos	Service code	Description
1	4222 036 14220	Shaving unit
2	4822 502 14545	Screw
3	4222 036 14210	Protecting cap
4	4222 036 14230	Additive tubes
5	4222 036 14250	IM cap assy
6	4222 036 14280	V-spring
7	4222 036 14270	Z-spring
8	4222 036 14290	Additive lever
9	4222 036 02770	Brush

Pos	Service code	Description
10	4222 036 14300	Trimmer assy
11	4222 036 14320	Stand ME
12	4222 036 04080	Power plug U1 EUR
	4222 036 04090	Power plug U1 GBR
	4222 036 04850	Power plug U1 KOR
	4222 036 05110	Power plug U1 CAN/TW
	4222 036 05160	Power plug U1 NOR
	4222 036 14360	Pouch