

Service
Service
Service



Philips Consumer Lifestyle

Service Manual

PRODUCT INFORMATION

Safety:

- After the product has been repaired, it should function properly and has to meet the safety requirements as laid down and officially established at this moment.

TECHNICAL INFORMATION

- No specific issues

DISASSEMBLY- AND RE-ASSEMBLY ADVISE

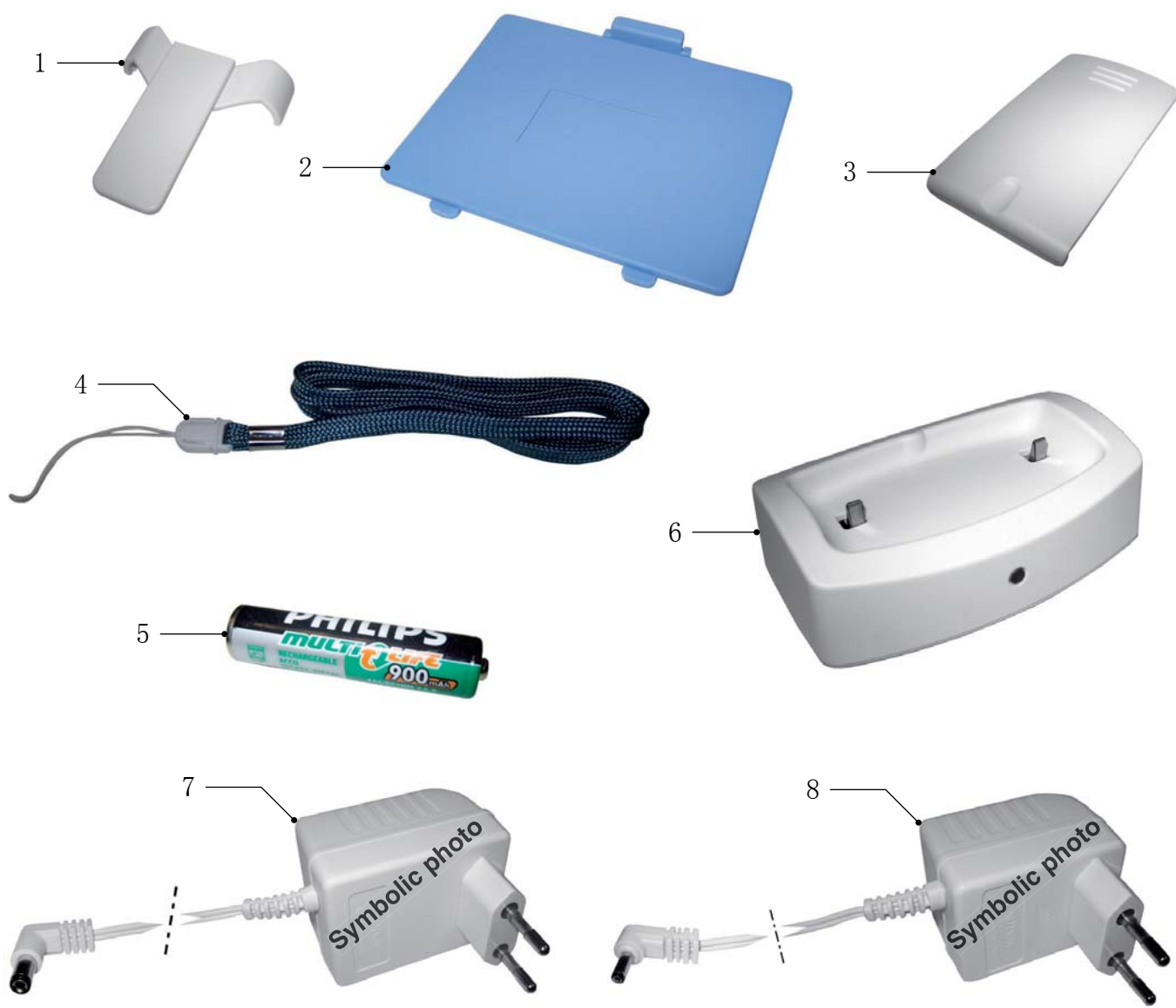
- No specific issues

REPAIR INSTRUCTIONS

- No specific issues

OPTIONAL (accessories)

- No specific issues



Pos	Service Code	Description		
1	420303584760	BELT CLIP		
2	420303584780	BATTERY COVER	Baby Unit	US Version
2	996510035442	BATTERY COVER	Baby Unit	EU/UK Version
3	996510035452	BATTERY COVER	Parent Unit	US Version
3	420303584770	BATTERY COVER	Parent Unit	EU/UK Version
4	420303584790	Neck Strap		
5	996510035449	Battery Pack	US Version	
5	996510035451	Battery	EU/UK Version	
6	996510035444	Charger	EU/UK Version	
6	996510035454	Charger	US Version	
7	996510035445	Adapter	Baby Unit	EU Version
7	996510035447	Adapter	Baby Unit	UK Version
7	996510035453	Adapter	Baby Unit	US Version
8	996510035446	Adapter	Parent Unit	EU Version
8	996510035448	Adapter	Parent Unit	UK Version
8	996510035443	Adapter	Parent Unit	US Version