

Service
Service
Service



Philips Consumer Lifestyle

ServiceManual

PRODUCT INFORMATION

- This product meets the requirements regarding interference suppression on radio and TV.
- After the product has been repaired, it should function properly and has to meet the safety requirements as officially laid down at this moment.

TECHNICAL INFORMATION

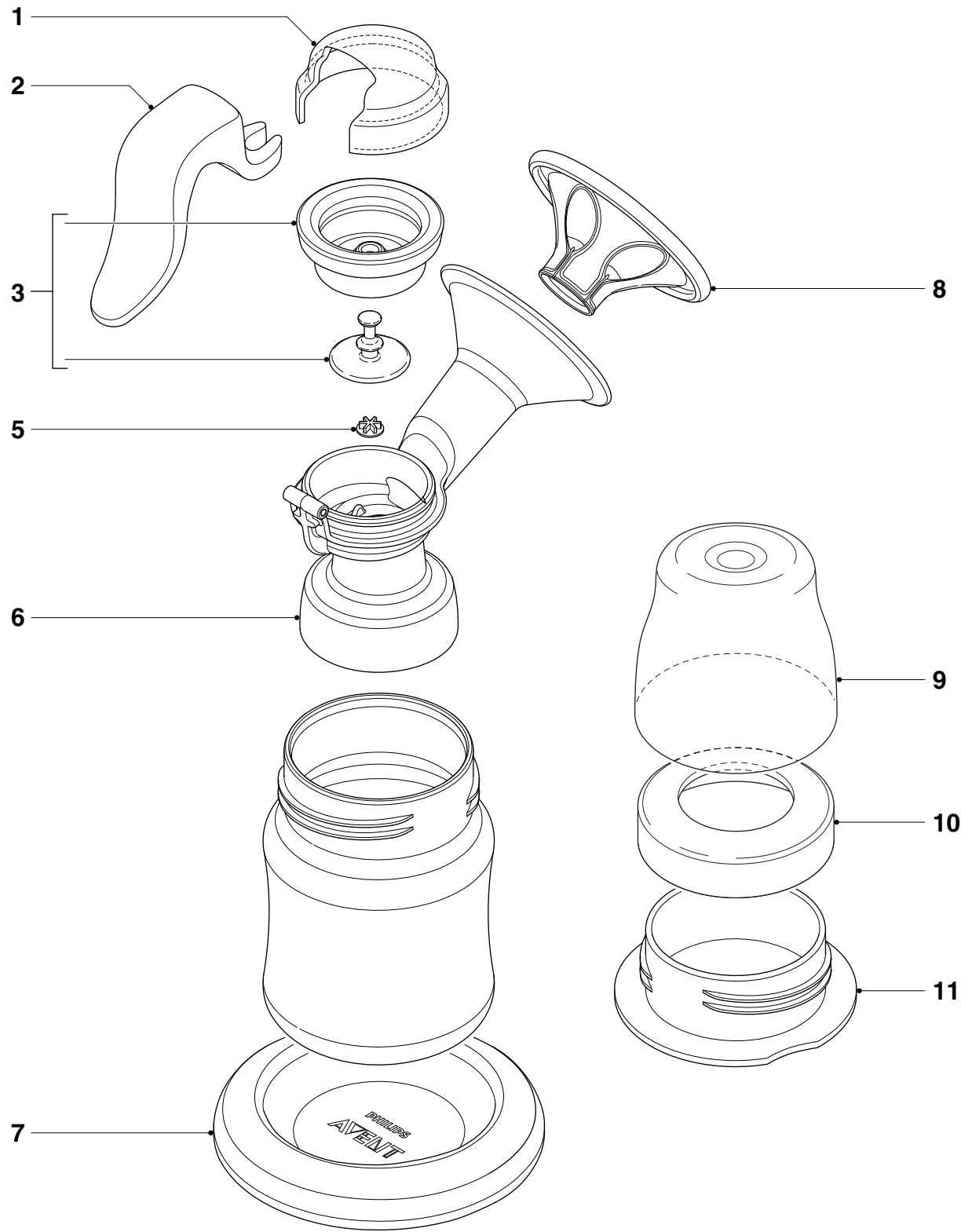
- SAP coding : SCF300

ACCESSORIES

- No specific issues

OPTIONAL (accessories)

- No specific issues



Pos	Service code	Description
1	4213 334 10050	Manual B/Pump Cap Bulk
2	4213 334 15090	ISIS Handle (Diaph Bpump) Bulk
3	4213 334 40000	B/Pump Diaphragm/Stem Bulk
5	4213 334 40200	ISIS B/P Valve White Bulk
6	4213 334 15210	ISIS B/Pump Body Pes Bulk

Pos	Service code	Description
7	4213 334 15220	Funnel Cover / Stand Bulk
8	4213 334 40070	PC01 ISIS Pump Massage Cushion Bulk
9	4213 330 00010	Dome Lids Bulk
10	4213 330 00000	Bottle Screw Ring White Bulk
11	4213 334 15200	Travel Cover / Sealing Base Bulk