

Service  
Service  
Service



Philips Consumer Lifestyle

# Service Manual

## PRODUCT INFORMATION

### General:

- Rechargeable total body grooming system
- World wide automatic voltage selection
- Washable
- 5 integrated length setting
- Cordless use only

### Safety information

- This product meets the requirements regarding interference suppression on radio and TV.
- After the product has been repaired, it should function properly and has to meet the safety requirements as officially laid down at this moment.

## TECHNICAL INFORMATION

- Mains : Voltage - Input : 100 - 240 V / 50 - 60 Hz
- Output : 15 V
- Power system : Rechargeable
- Batteries : NiMh
- Charging time : 8 hours
- Capacity : up to 50 minutes
- Motor voltage : 2,4 Volt

## REPAIR INSTRUCTION

- No specific issues

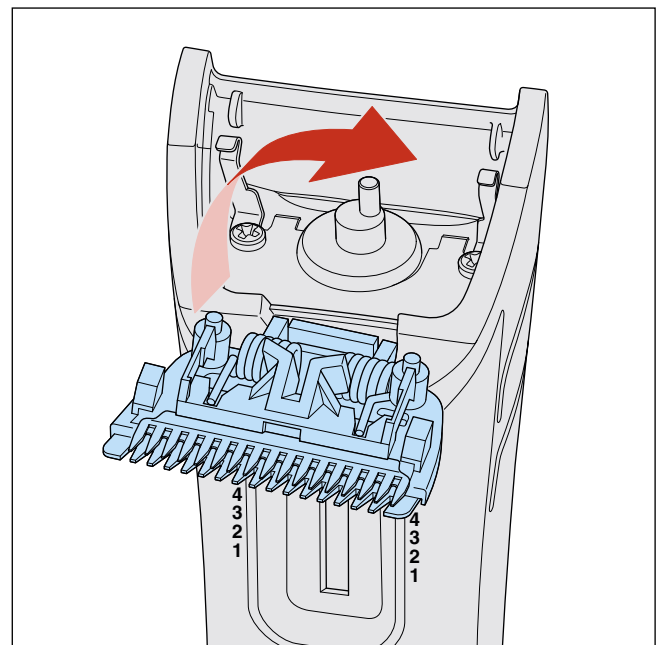
## OPTIONAL (accessories)

- No specific issues

## DISASSEMBLY- AND RE-ASSEMBLY ADVICE

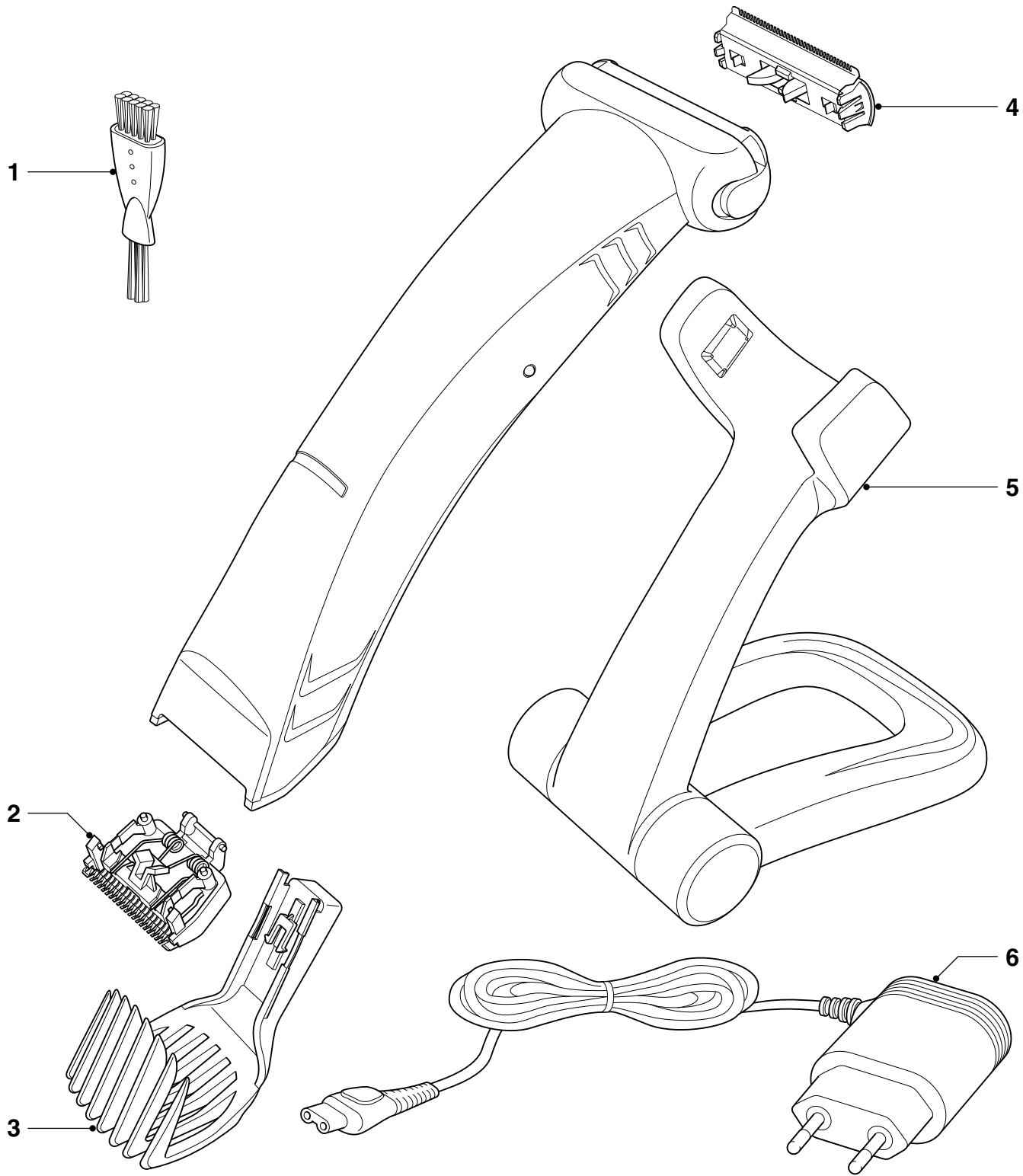
### Disassembly

1. Remove comb.
2. Open trimmer.
3. Remove trimmer by turning the trimmer to the left or the right. (see picture)



### Re-assembly

- Do this opposite.



Pos	Service code	Description
1	4222 036 02770	Brush
2	4222 036 17461	Cutter
3	4222 036 17471	Comb
4	4203 035 51110	Shaving unit
5	4222 036 17481	Stand
6	2722 171 90065	Power Plug EU
	2722 171 90075	Power Plug US