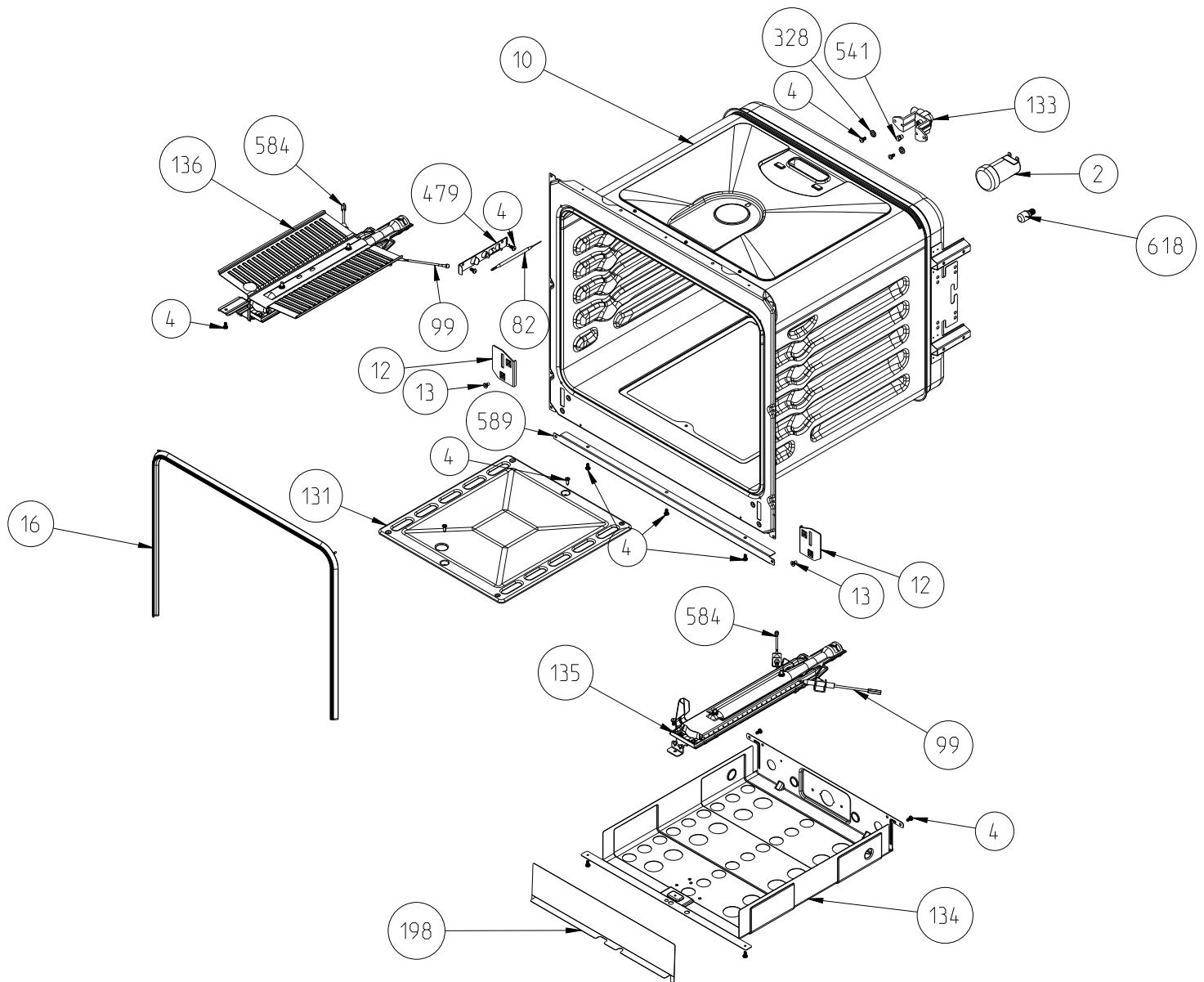


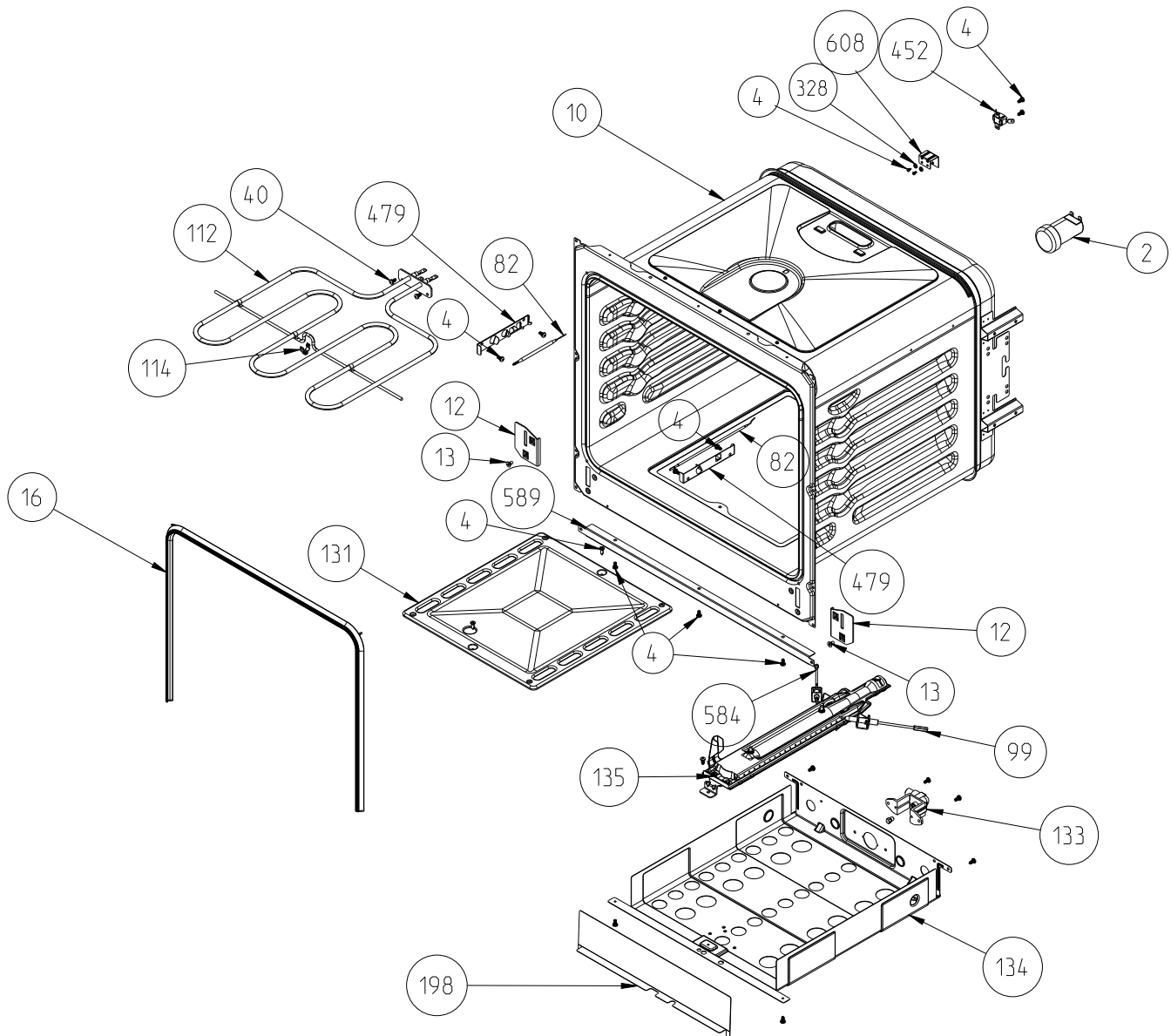
# 90 CM FREE STANDING BOTTLE COMPARTMENT COOKER CAVITY ASSEMBLY



**GAS OVEN GAS GRILL CAVITY ASSEMBLY**

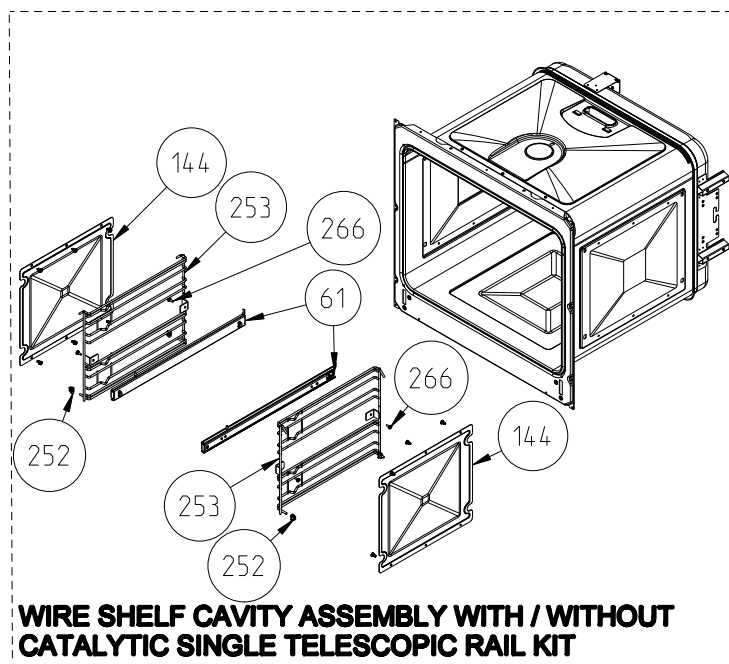
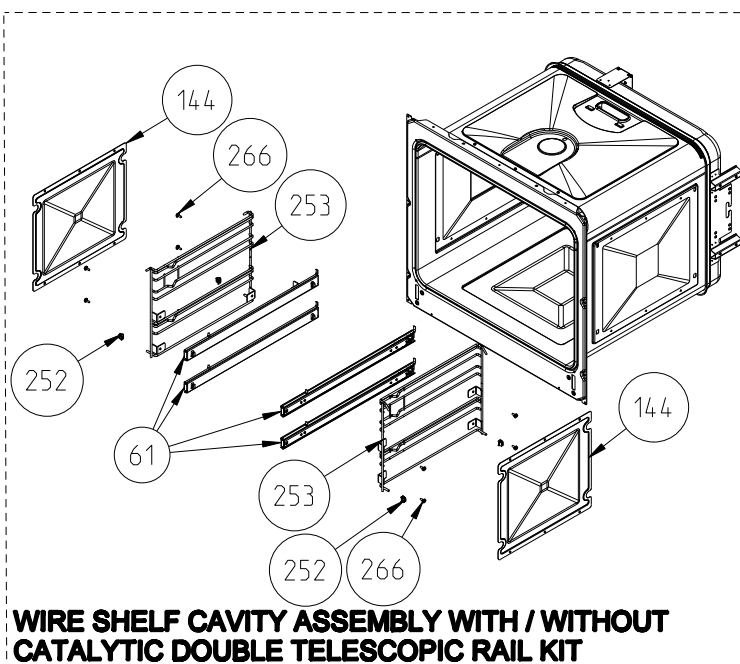
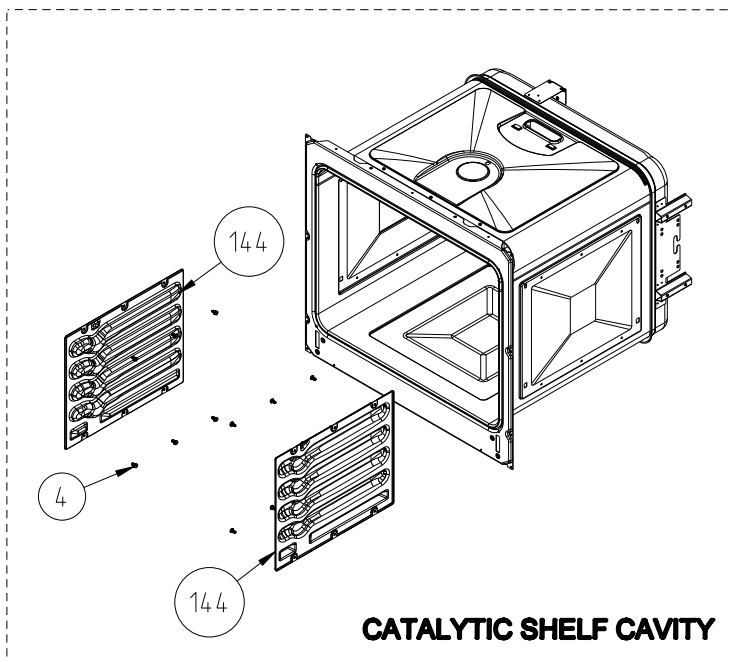
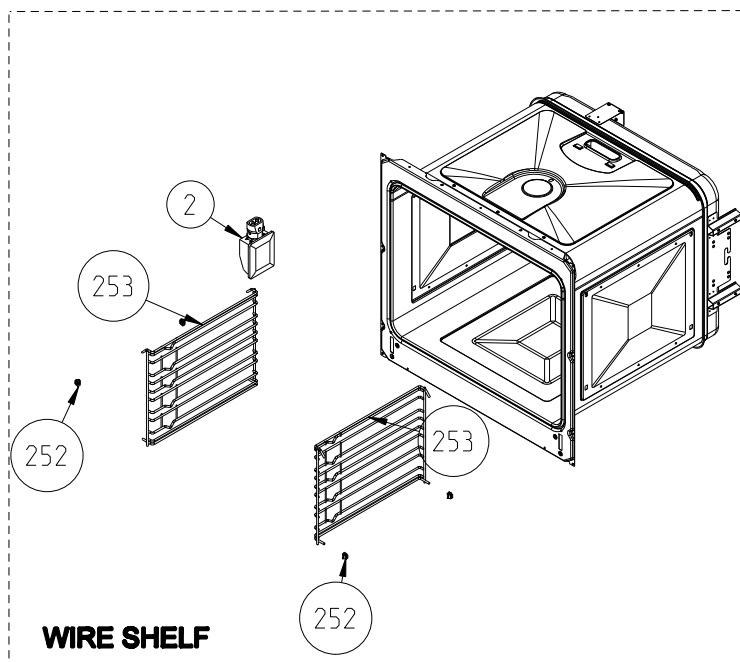
The exploded views given in this document are generic. They include all possible versions of the product. For specific part codes, please refer to the bom list of regarding model.

# 90 CM FREE STANDING BOTTLE COMPARTMENT COOKER CAVITY ASSEMBLY



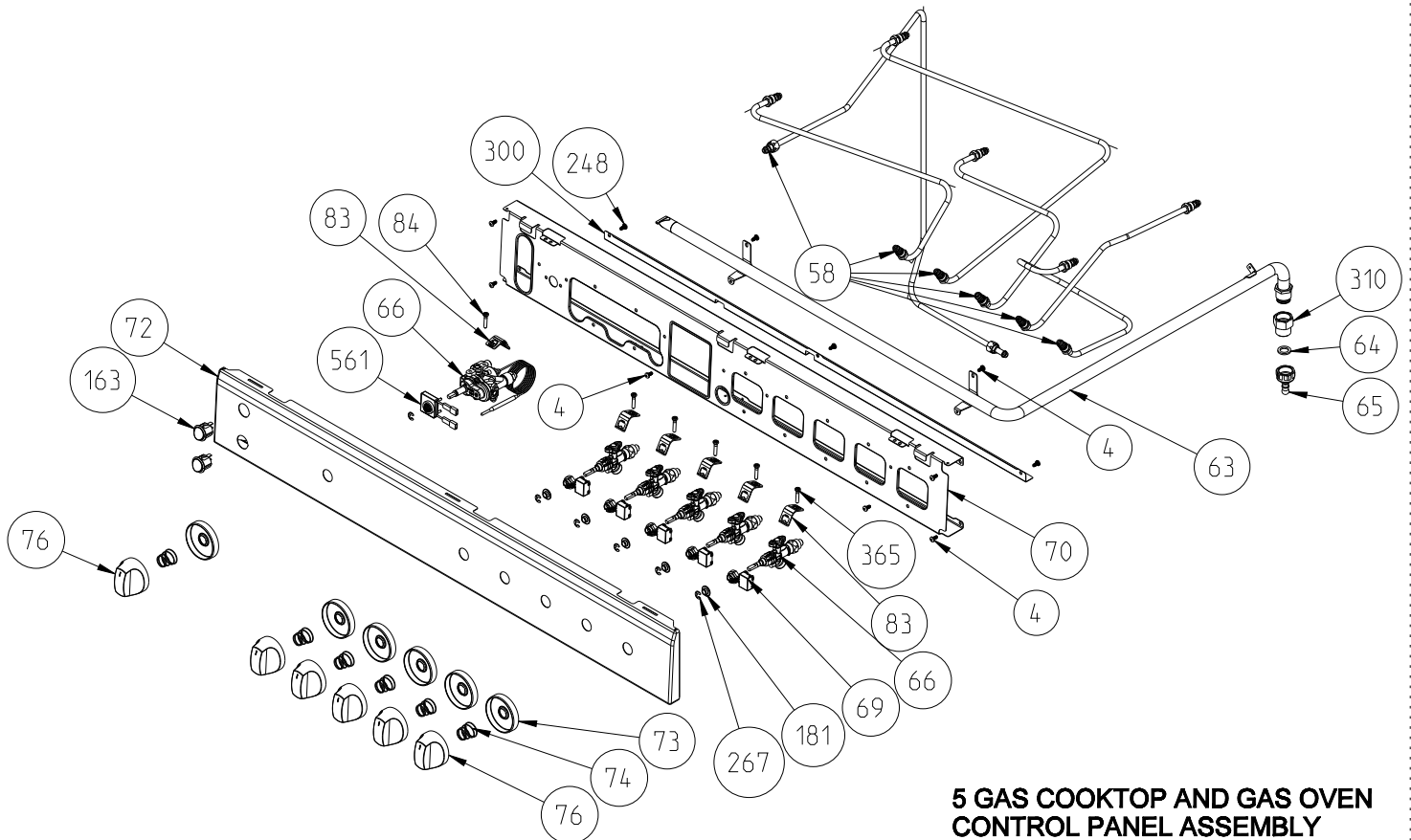
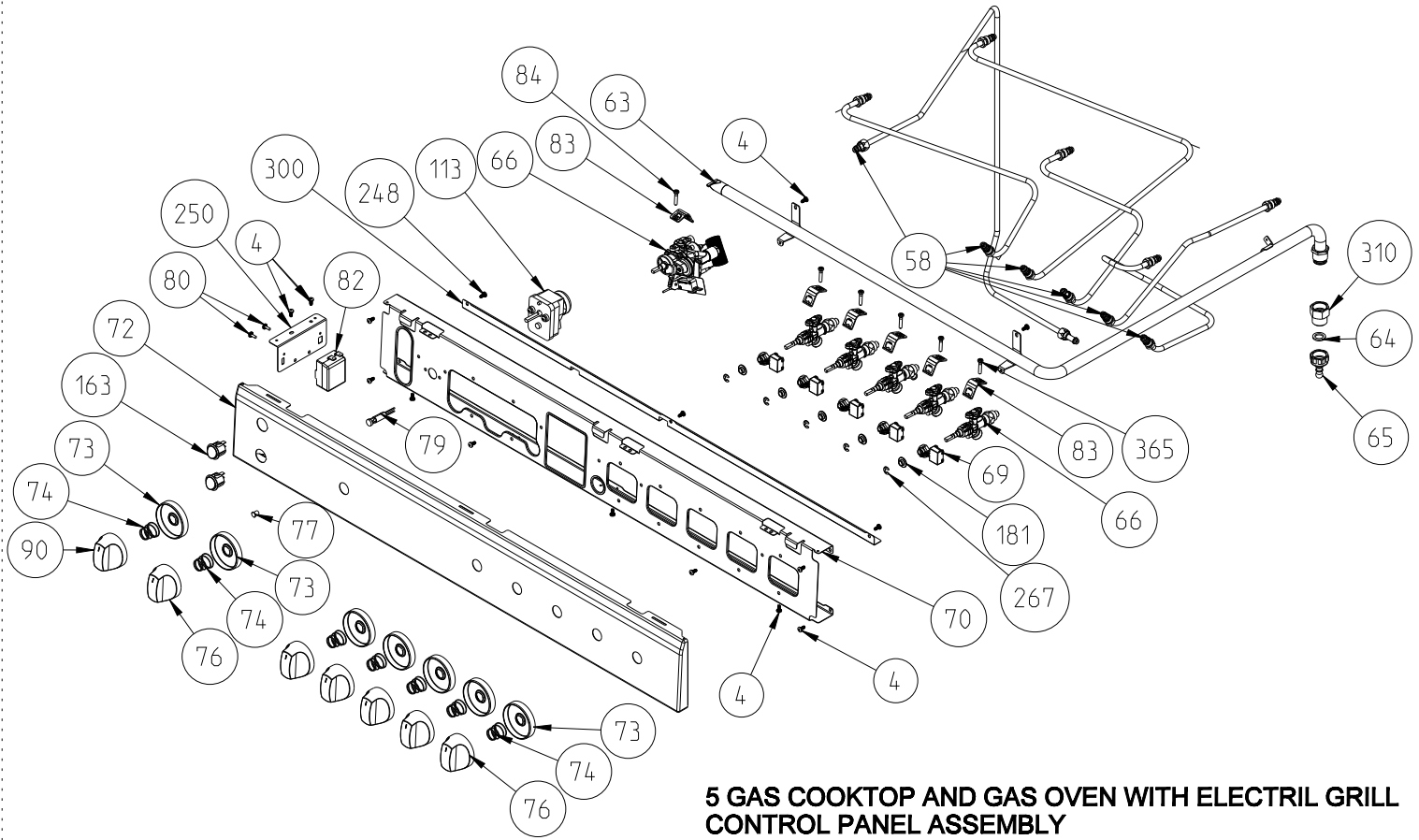
**GAS OVEN AND ELECTRIC GRILL CAVITY ASSEMBLY**

# 90 CM FREE STANDING BOTTLE COMPARTMENT GAS COOKER CAVITY ASSEMBLY



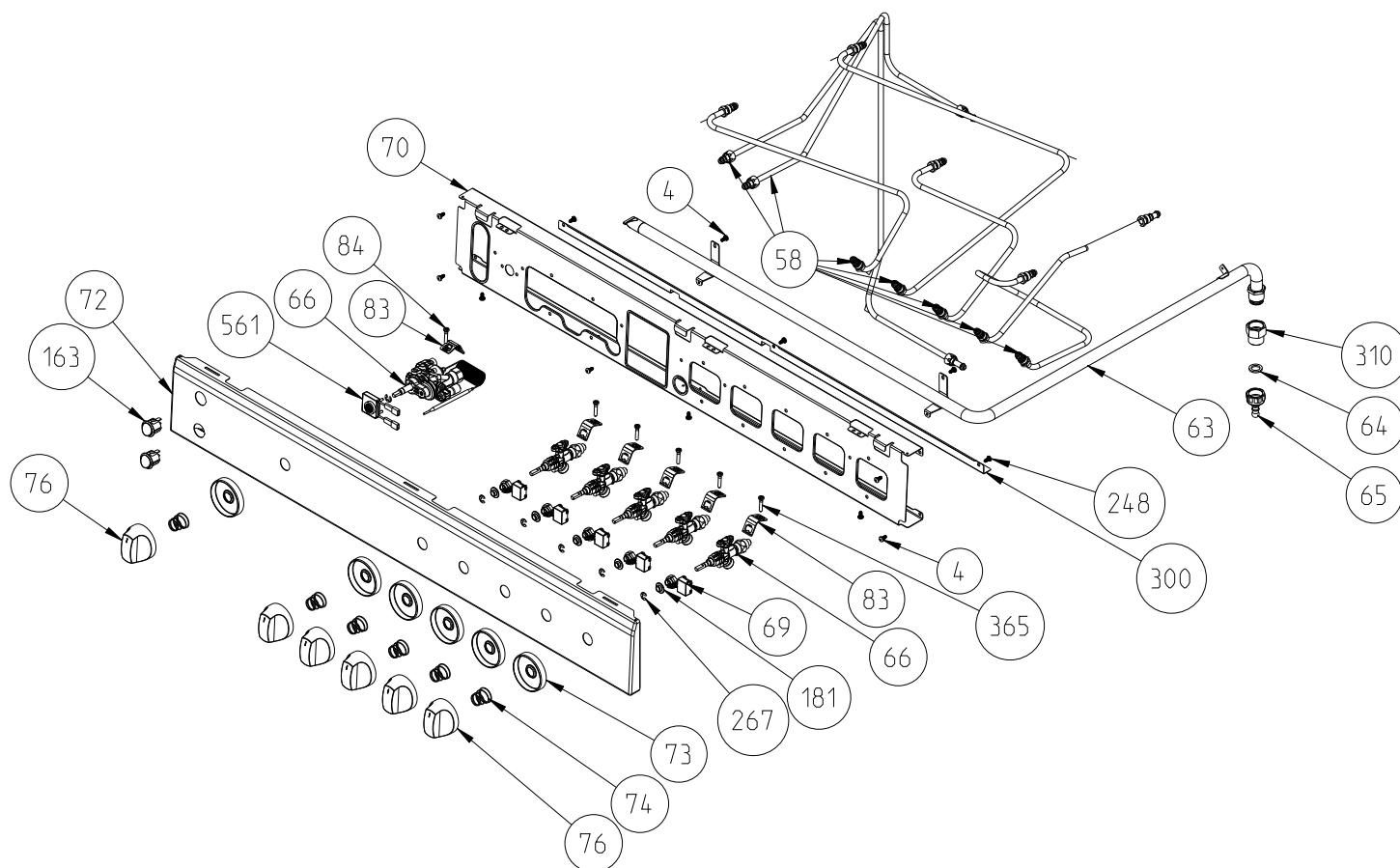
The exploded views given in this document are generic. They include all possible versions of the product. For specific part codes, please refer to the bom list of regarding model.

# 90 CM FREE STANDING COOKER BOTTLE COMPARTMENT CONTROL PANEL ASSEMBLY

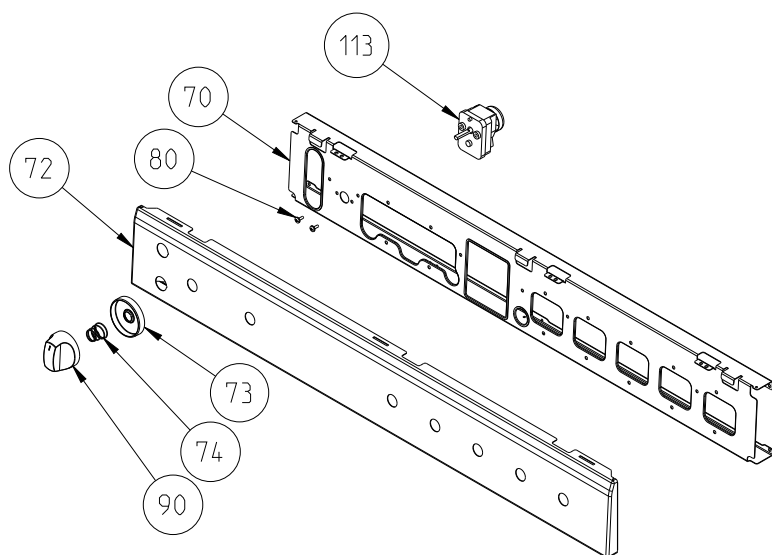


**"The exploded views given in this document are generic.They include all possible versions of the product. For specific part codes,please refer to the bom list of regarding model."**

# 90 CM FREE STANDING COOKER BOTTLE COMPARTMENT CONTROL PANEL ASSEMBLY



## 5 GAS COOKTOP AND GAS OVEN WITH GAS GRILL CONTROL PANEL ASSEMBLY

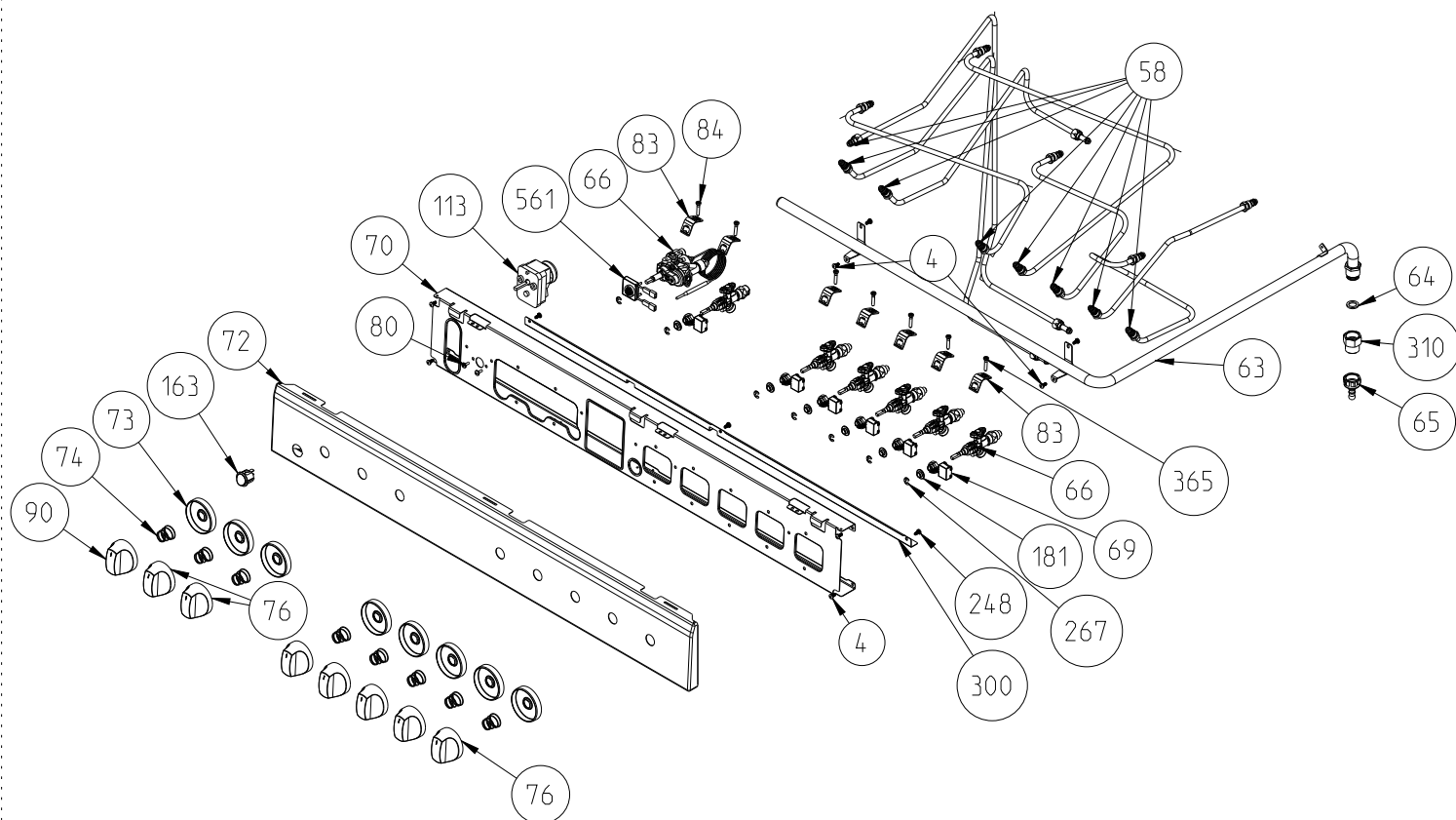


### MECHANIC TIMER (OPTIONAL)

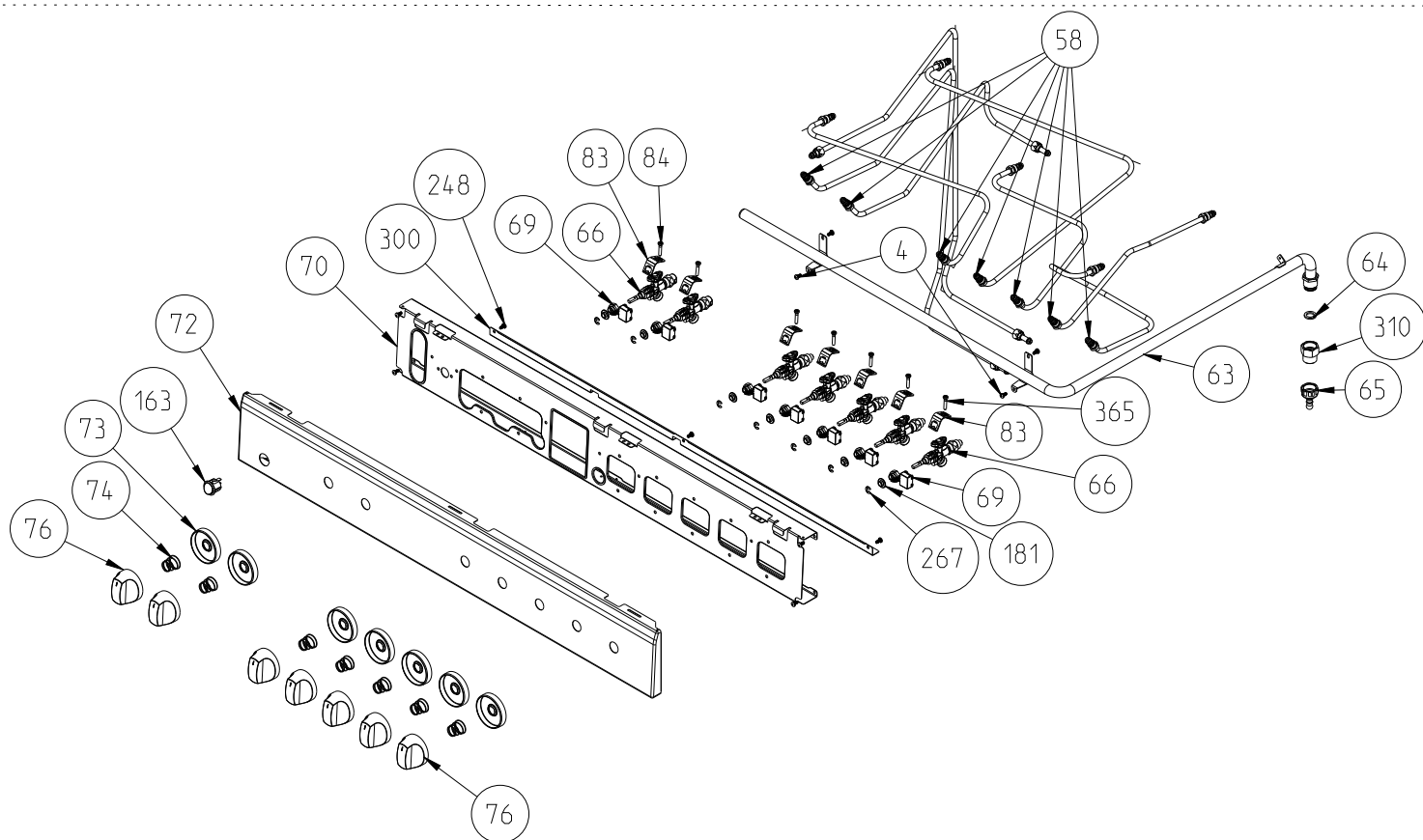
"The exploded views given in this document are generic.They include all possible versions of the product.  
For specific part codes,please refer to the bom list of regarding model."

17.SEPTEMBER.2013

# 90 CM FREE STANDING COOKER BOTTLE COMPARTMENT CONTROL PANEL ASSEMBLY



**5 GAS COOKTOP WITH OVEN THERMOSTAT (SEPERATE KNO B CONTROL)**

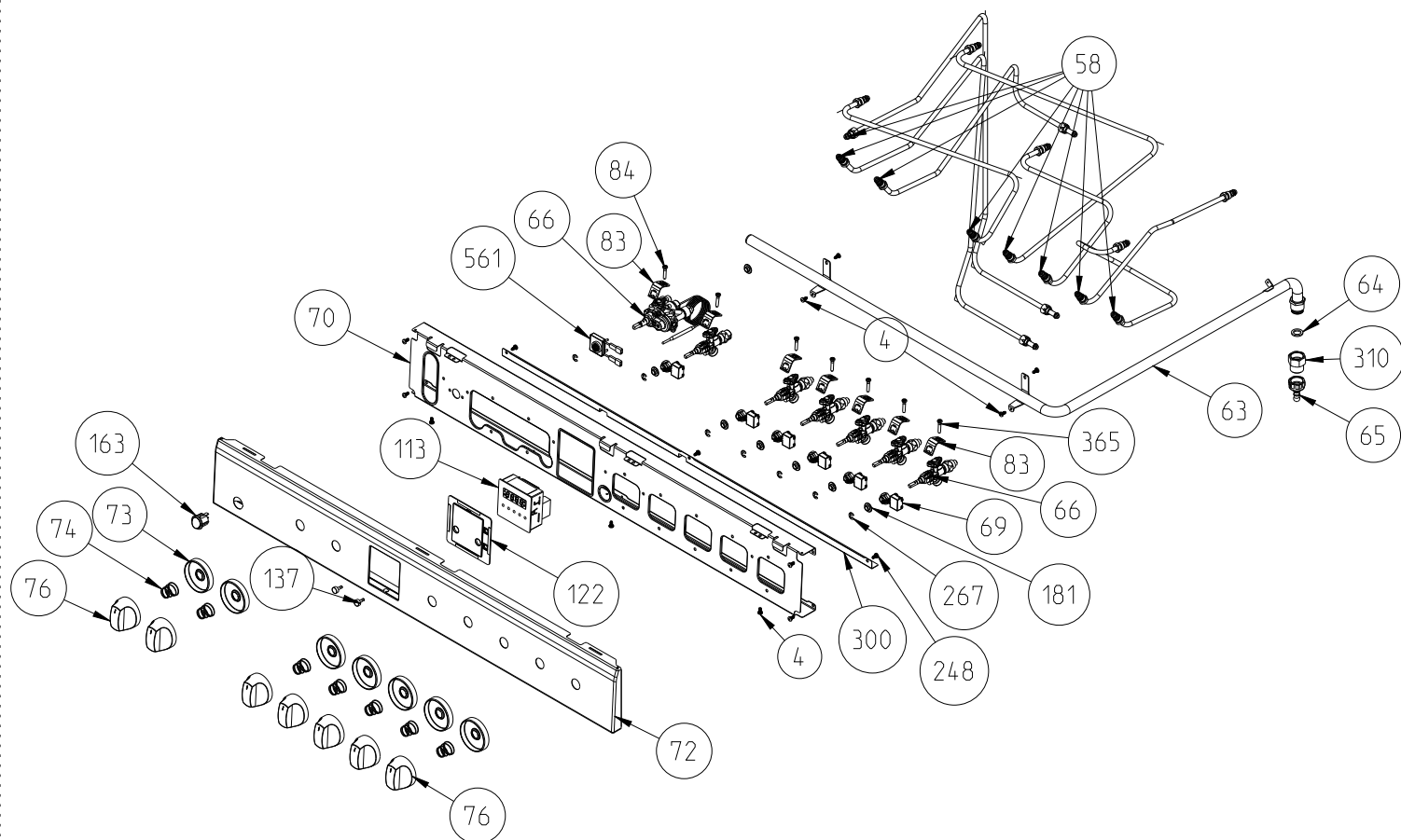


**5 GAS COOKTOP WITHOUT OVEN THERMOSTAT (SEPERATE KNO B CONTROL)**

"The exploded views given in this document are generic. They include all possible versions of the product.  
For specific part codes, please refer to the bom list of regarding model."

17. SEPTEMBER. 2013

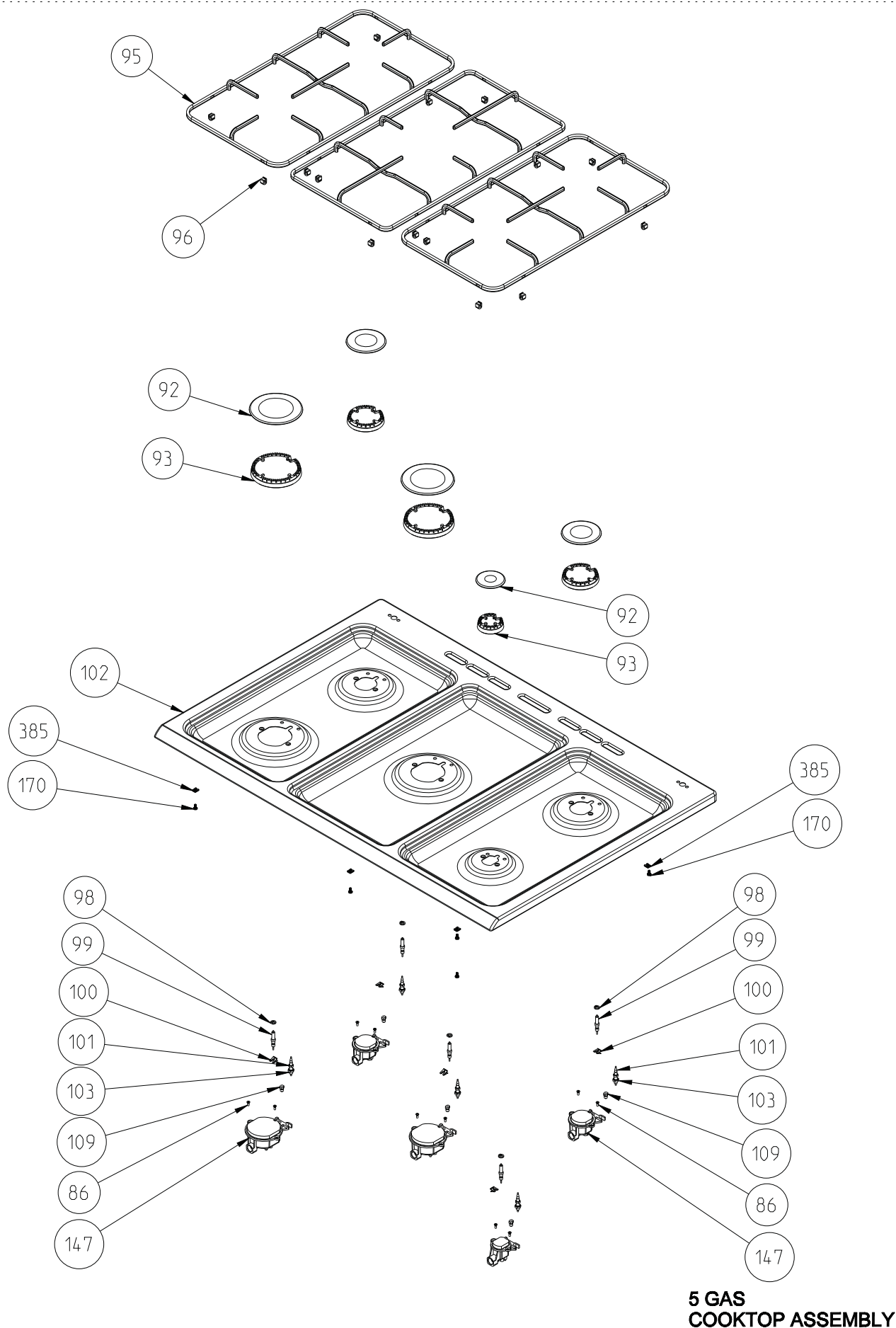
# 90 CM FREE STANDING COOKER BOTTLE COMPARTMENT CONTROL PANEL ASSEMBLY



**5 GAS COOKTOP WITH OVEN THERMOSTAT (SEPERATE KNO B CONTROL ,DIGITAL TIMER)**

"The exploded views given in this document are generic.They include all possible versions of the product.  
For specific part codes,please refer to the bom list of regarding model."

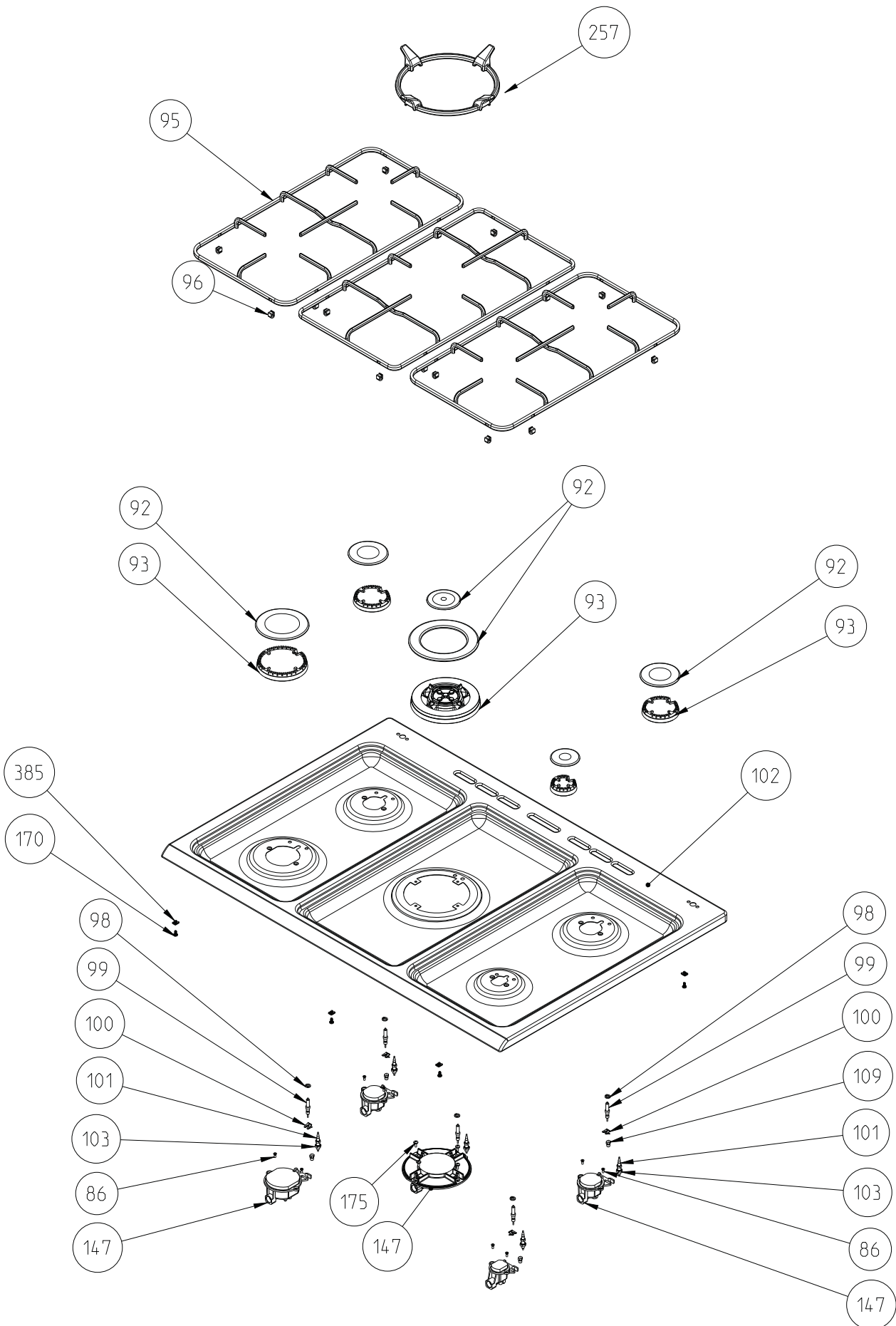
# 90 CM FREE STANDING GAS COOKER COOKTOP ASSEMBLY



**5 GAS  
COOKTOP ASSEMBLY**

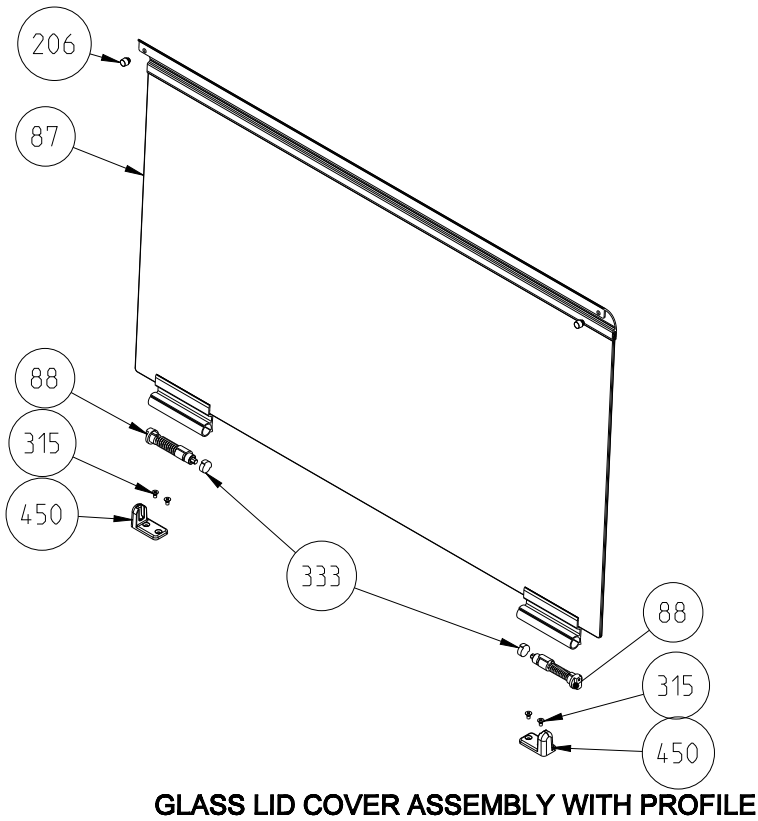
"The exploded views given in this document are generic. They include all possible versions of the product. For specific part codes, please refer to the bom list of regarding model."

# 90 CM FREE STANDING GAS COOKER COOKTOP ASSEMBLY

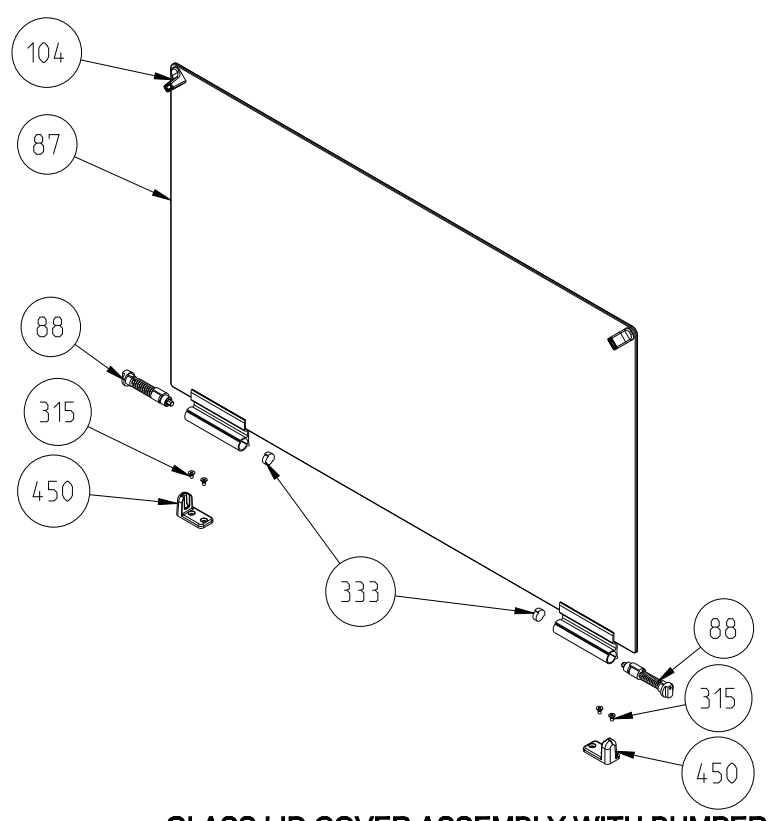


**"The exploded views given in this document are generic.They include all possible versions of the product. For specific part codes,please refer to the bom list of regarding model."**

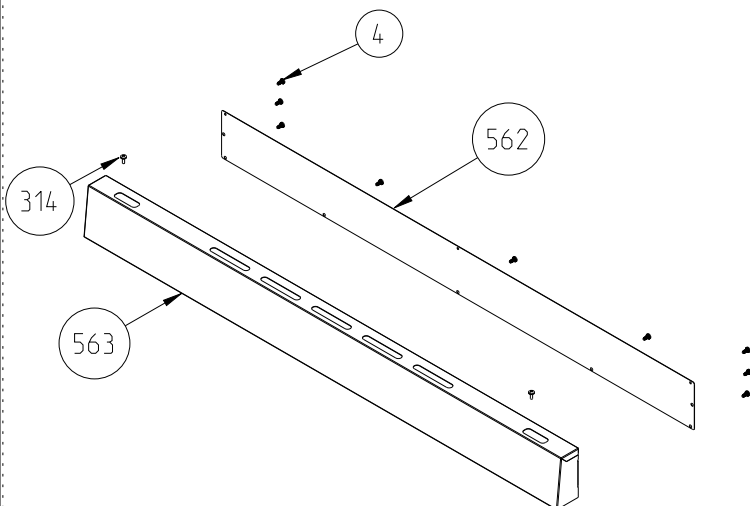
# 90 CM FREE STANDING GAS COOKER LID ASSEMBLY



**GLASS LID COVER ASSEMBLY WITH PROFILE**

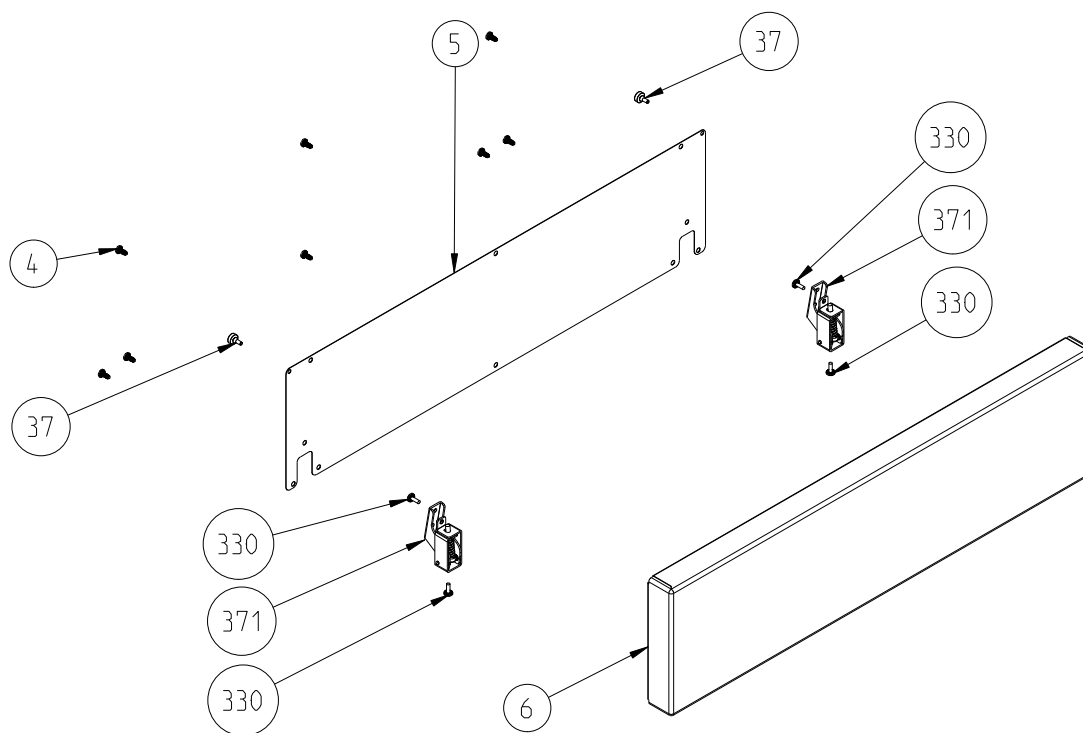


**GLASS LID COVER ASSEMBLY WITH BUMPER**

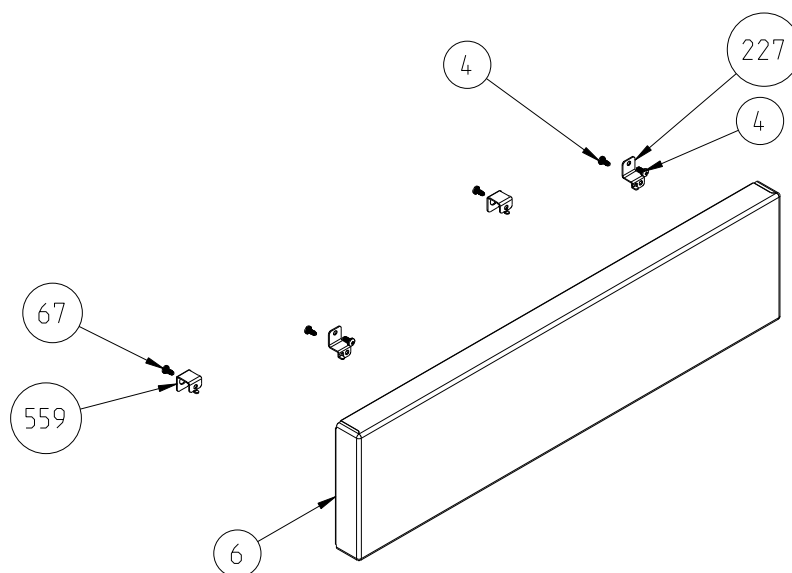


"The exploded views given in this document are generic.They include all possible versions of the product.  
For specific part codes,please refer to the born list of regarding model."

# 90 CM FREE STANDING COOKER BOTTLE COMPARTMENT DRAWER ASSEMBLY



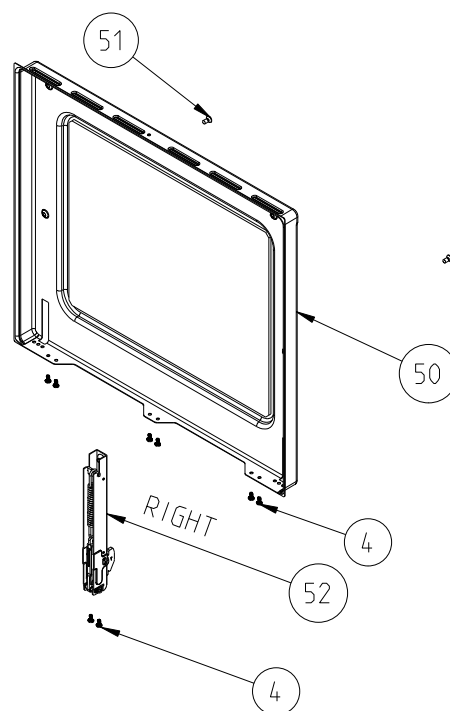
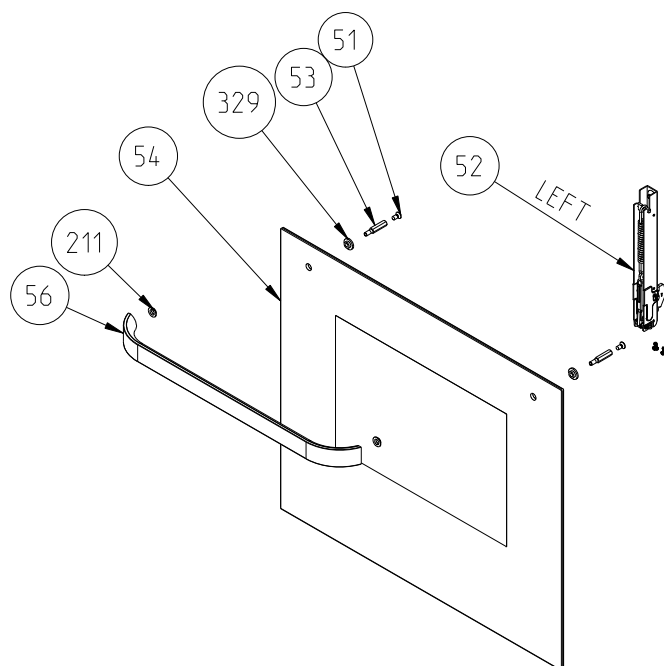
**FLAP DRAWER ASSEMBLY**



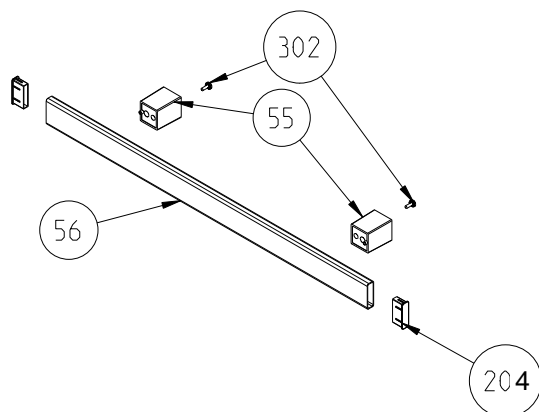
**FIXED DRAWER ASSEMBLY**

**"The exploded views given in this document are generic.They include all possible versions of the product. For specific part codes,please refer to the bom list of regarding model."**

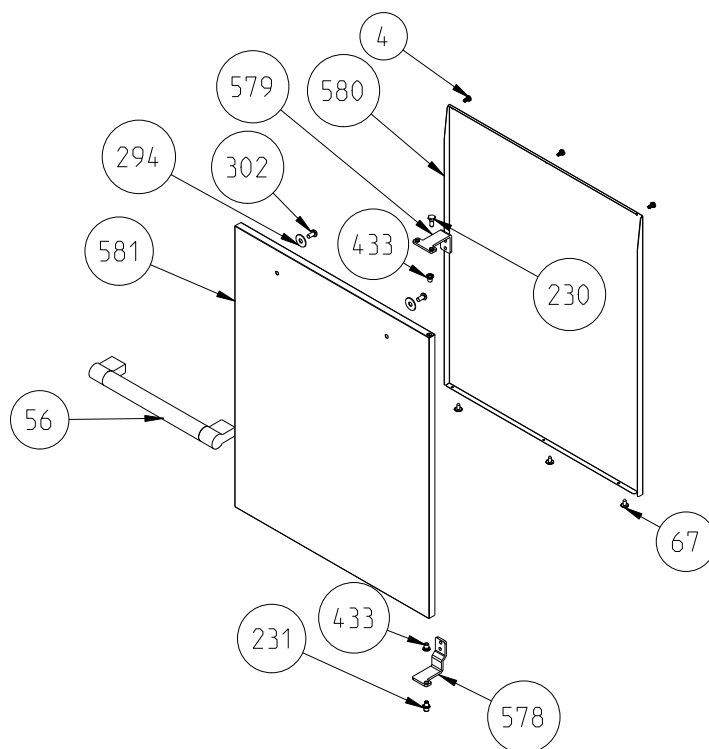
# 90 CM FREE STANDING BOTTLE COMPARTMENT COOKER OVEN DOOR ASSEMBLY



**POSITION NUMBER 376  
FLAT TYPE OVEN DOOR WITH 2 GLASSES  
(SMALL INNER GLASS)**



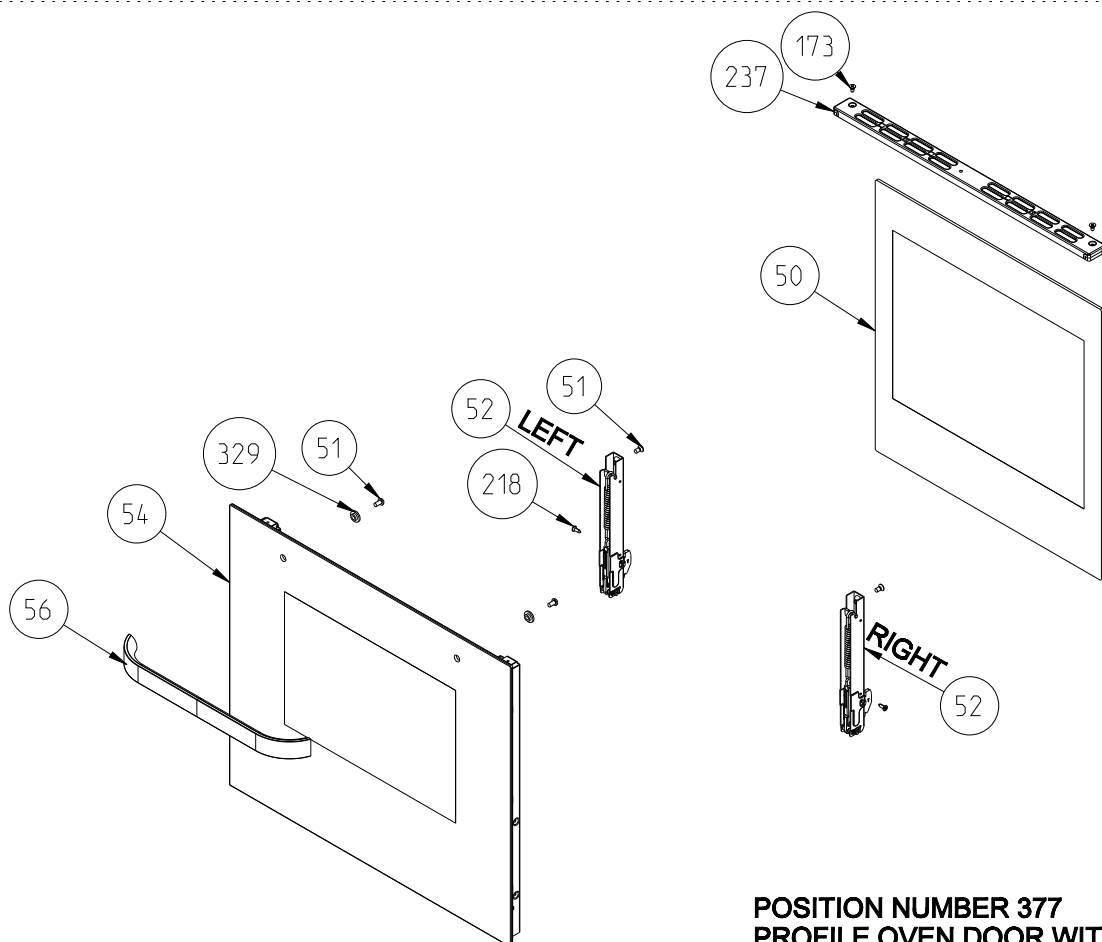
**HANDLE WITH BRACKET**



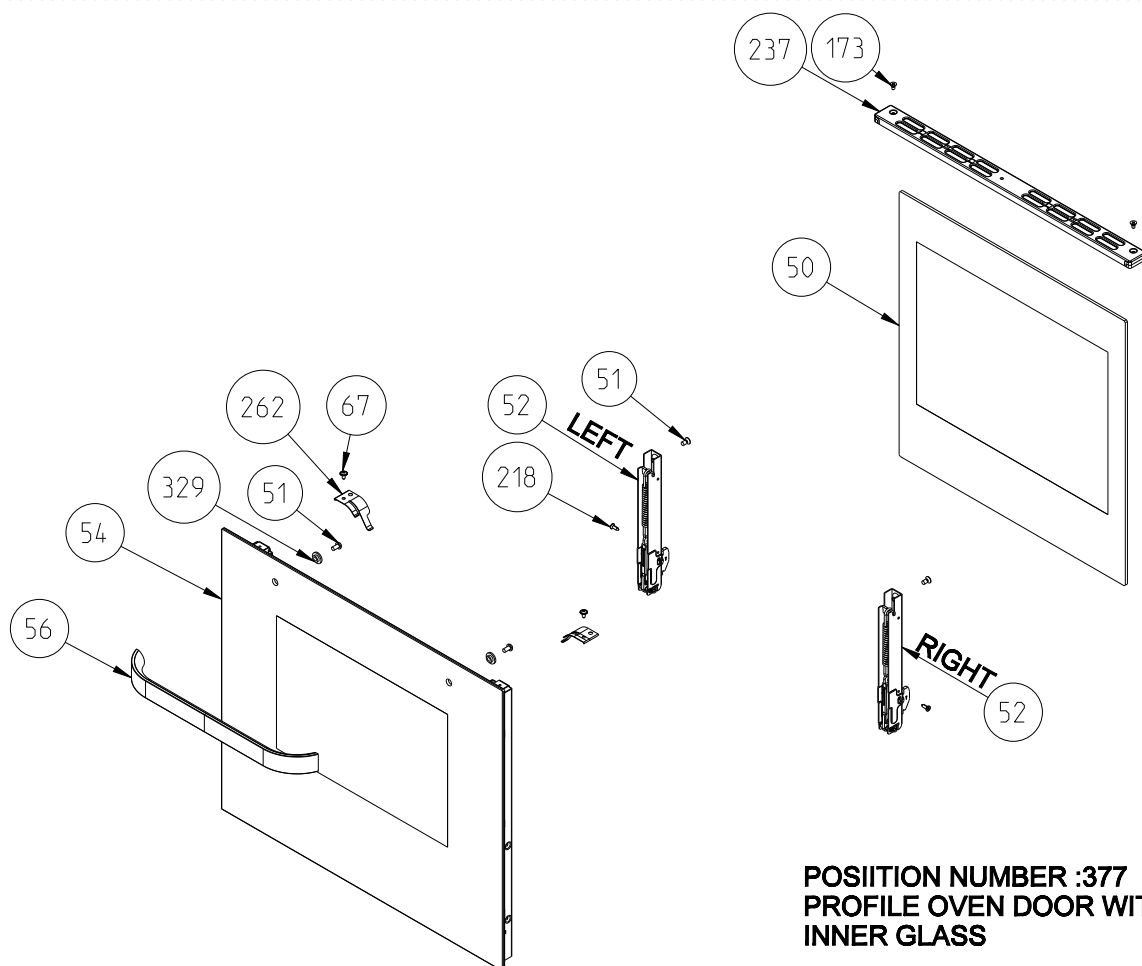
**BOTTLE COMPARTMENT DOOR**

**"The exploded views given in this document are generic. They include all possible versions of the product. For specific part codes, please refer to the born list of regarding model."**

# 96 FREE STANDING BOTTLE COMPARTMENT COOKER PROFILE OVEN DOOR ASSEMBLY

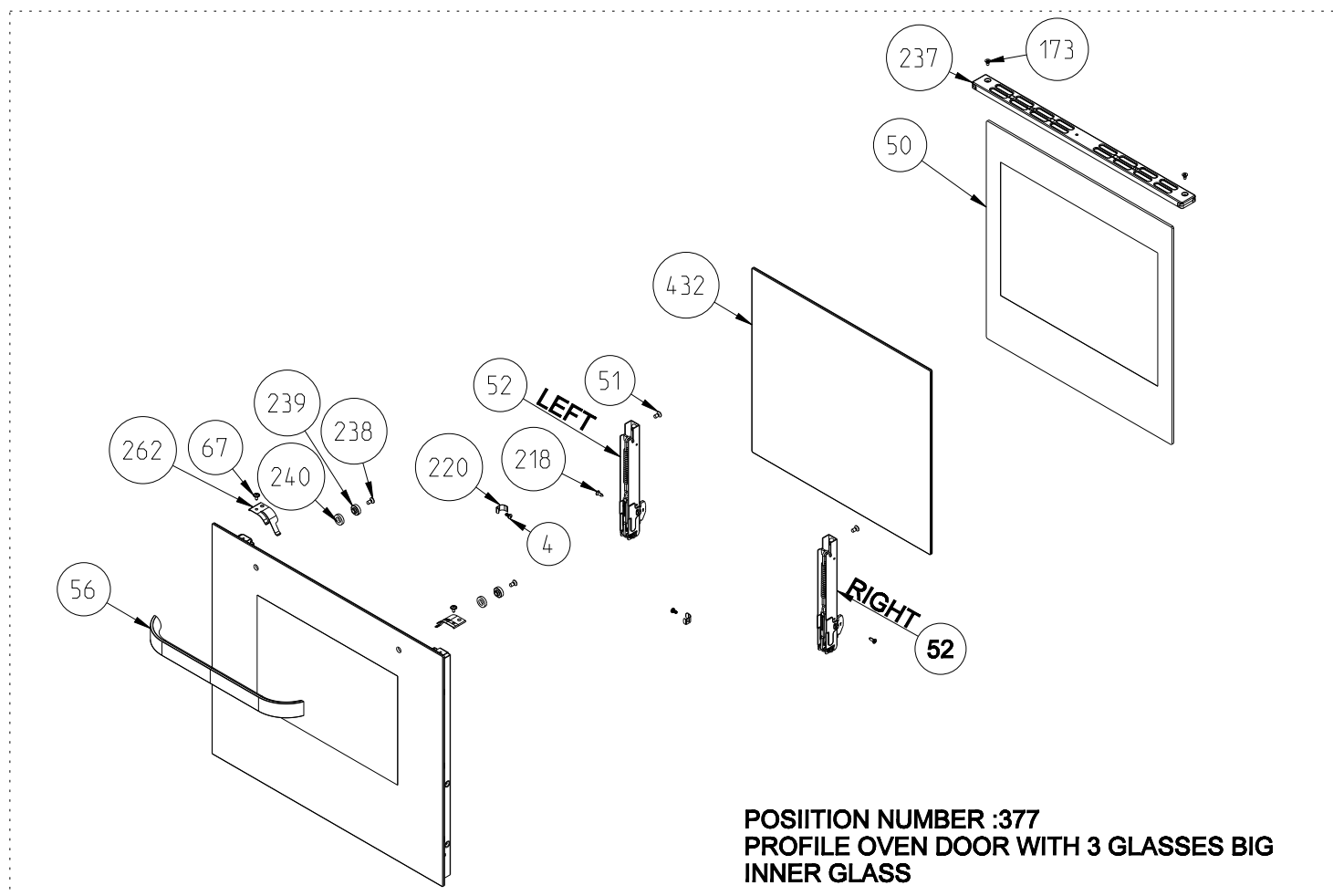


**POSITION NUMBER 377**  
**PROFILE OVEN DOOR WITH 2 FIXED GLASS**



**POSITION NUMBER :377**  
**PROFILE OVEN DOOR WITH 2 GLASSES BIG**  
**INNER GLASS**

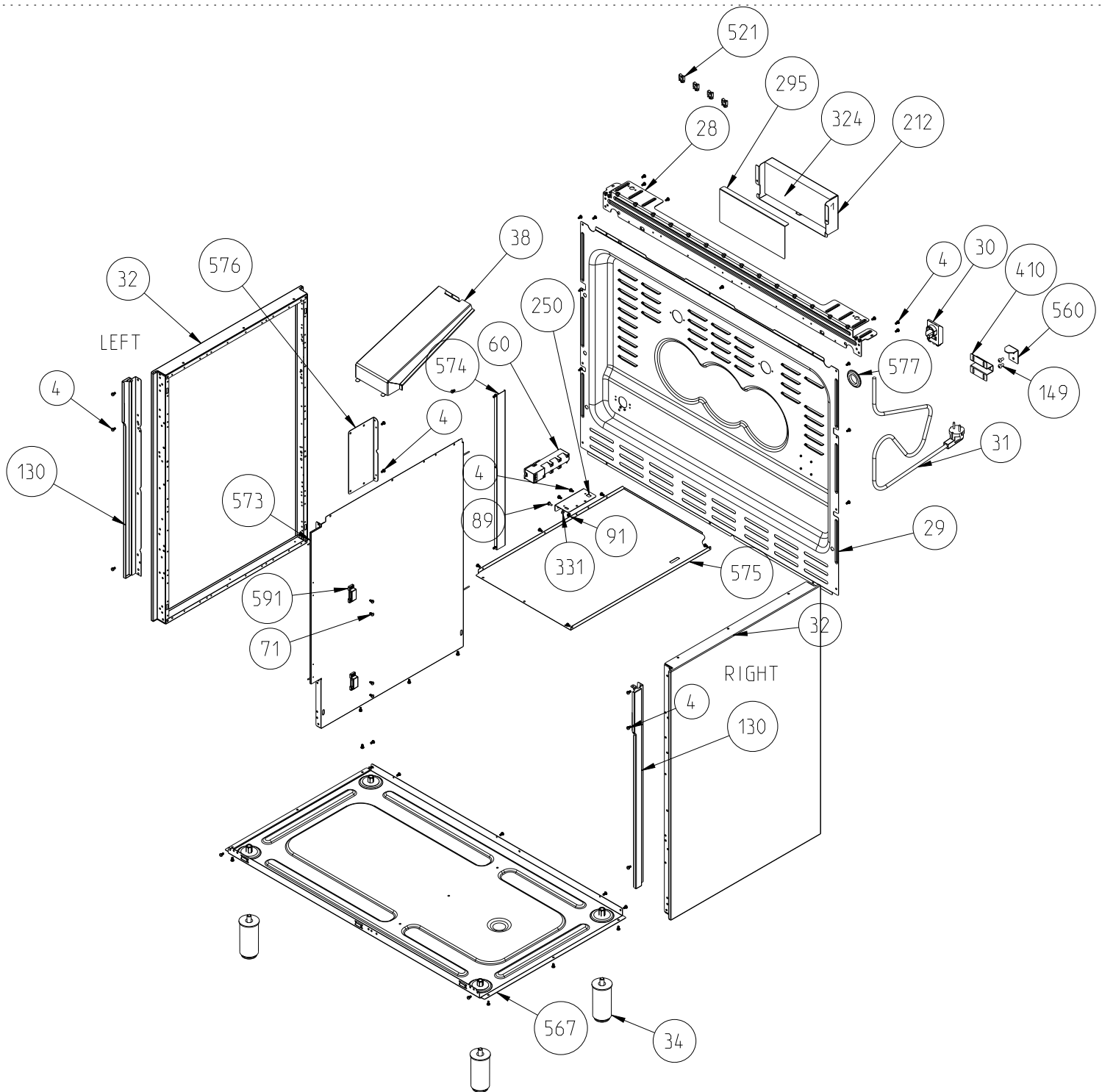
# 96 FREE STANDING BOTTLE COMPARTMENT COOKER PROFILE OVEN DOOR ASSEMBLY



"The exploded views given in this document are generic.They include all possible versions of the product.  
For specific part codes,please refer to the bom list of regarding model."

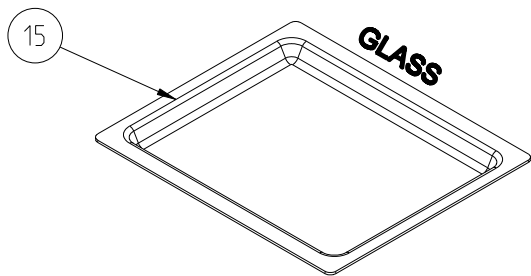
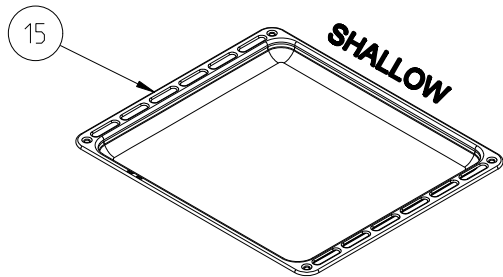
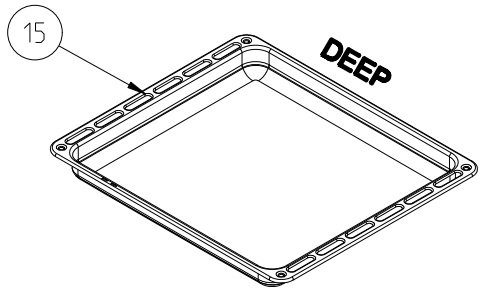
17 September 2013

# 90 CM FREE STANDING BOTTLE COMPARTMENT GAS COOKER SIDE PANEL ASSEMBLY

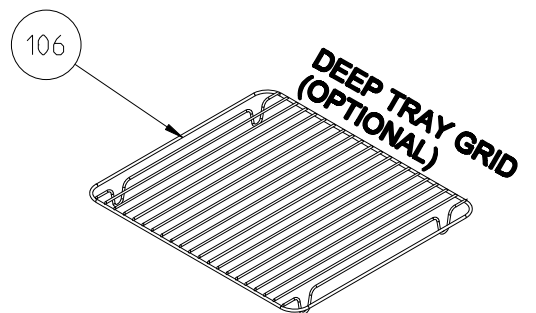
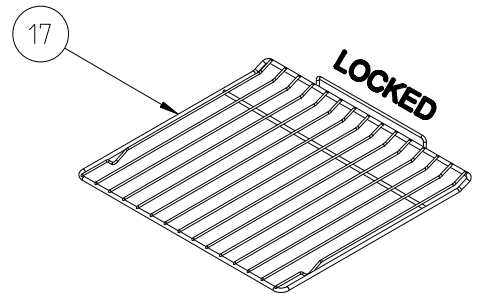
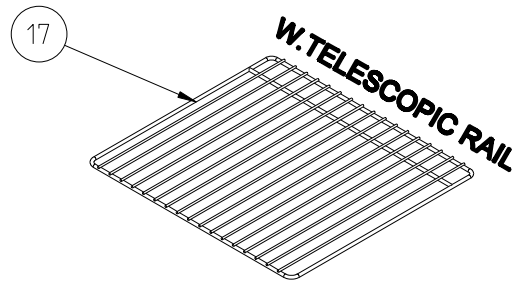


**GAS OVEN SIDE PANEL ASSEMBLY  
WITH BOTTLE COMPARTMENT**

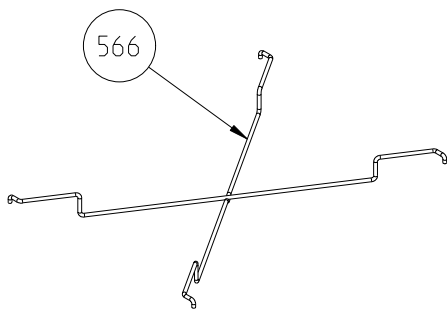
"The exploded views given in this document are generic. They include all possible versions of the product. For specific part codes, please refer to the bom list of regarding model."



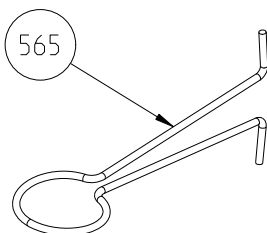
**TRAYS (OPTIONAL)**



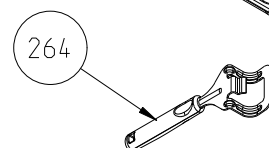
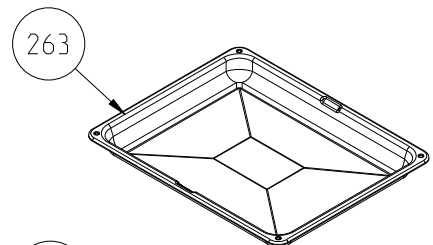
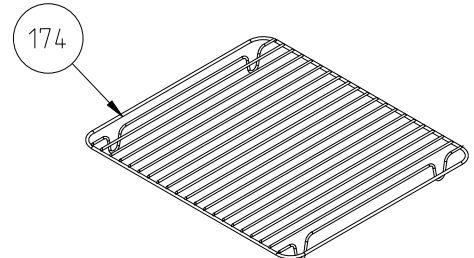
**GRID (OPTIONAL)**



**TUBE HOLDER WIRE**



**HOSE HOLDER WIRE**



**GRILL PAN AND HANDLE SET  
(TRAY SET FOR GRILL)  
POSITION NO 265 (OPTIONAL)**

## 90 CM FREE STANDING BOTTLE COMPARTMENT COOKERS

POSITION NUMBER	PART NAME
2 / 618	OVEN LIGHT / LAMP
4	SCREW (3.9*9.5)
5	DRAWER INNER COVER
6	DRAWER PANEL
10	CAVITY
12	HINGE COUNTERPART (LEFT / RIGHT)
13	SCREW (M4*8)
15	TRAY (DEEP / SHALLOW)
16	OVEN DOOR GASKET
17	GRID (LOCKED ,W.TELESCOPIC RAIL)
28	REAR TOP PANEL
29	REAR PANEL
30	TERMINAL BOX
31	POWER CORD
32	SIDE PANEL
34	ADJUSTABLE WHEEL
37	DRAWER PANEL STOPPER
38	EXHAUST
40	SCREW (KNURLED, 3.5*9.5)
50	INNER GLASS ASSEMBLY
51	SCREW (COUNTERSUNK-HEAD,M5*10,BLACK)
52	OVEN DOOR HINGE
53	OVEN DOOR HANDLE ASSEMBLY STUD
54	OUTER GLASS ASSEMBLY
55	HANDLE BRACKET
56	HANDLE BODY
58	GAS DELIVERY TUBE
60	IGNITOR
61	TELESCOPIC RAIL (RIGHT /LEFT)
63	MANIFOLD
64	STRAIGHT HOSE FITTING GASKET
65	HOSE FITTING (NG)
66	GAS VALVE
67	SCREW (3.9*9.5,SLIM HEAD)
69	MICROSWITCH HARNESS
70	INNER PANEL
72	FRONT PANEL
73	KNOB RING
74	KNOB SPRING
76	KNOB (GAS)
77	SIGNAL LAMP LENS
79	SIGNAL LAMP BODY
80	SCREW (M4*6)
82	CAPILLARY THERMOSTAT
83	COOKTOP VALVE ASSEMBLY BRACKET
84	SCREW (M4*18,head $\varnothing$ 9
86	SCREW (COUNTERSUNK-HEAD,M3*8,LENTIL HEAD)
87	GLASS LID ASSEMBLY
88	GLASS LID HING LEFT / RIGHT
89	SCREW (KNURLED, M4*10)
90	KNOB (ELECTRIC)
91	NUT
92	BURNER CAP
93	BURNER HEAD

## 90 CM FREE STANDING BOTTLE COMPARTMENT COOKERS

POSITION NUMBER	PART NAME
95	PAN SUPPORT
96	PAN SUPPORT BUMPER
97	GLASS LID HINGE COVER
98	SPARK PLUG GASKET
99	SPARK PLUG WITH CABLE
100	SPARK PLUG WITH SEGMENT
101	THERMOCOUPLE
102	COOKTOP
103	THERMOCOUPLE FIXING NUT
104	GLASS LID BUMPER
106	DEEP TRAY GRID
107	WASHER
109	INJECTOR
110	BOTTOM HEATING ELEMENT
111	BOTTOM HEATING ELEMENT HOLDER
112	TOP AND GRILL HEATING ELEMENT
113	TIMER (MECHANIC/ANALOG)
114	TOP HEATING ELEMENT BULB BRACKET
130	SIDE CLOSING PROFILE
131	GAS BURNER COVER
133	INJECTOR HOLDER (OVEN/GRILL)
134	BURNER BOX
135	OVEN BURNER
136	GRILL BURNER
144	CATALYTIC PANEL WITH WIRE SHELF (ENAMELLED) SHELF COVER (RIGHT / LEFT,CATALYTIC ENAMELLED)
147	BURNER BODY
149	SCREW (CIRCULAR-HEAD, 4.8*32)
152	SCREW (CIRCULAR-HEAD, 4.8*9.5)
163	OVEN LIGHT BUTTON
170	SCREW (COUNTERSUNK-HEAD,4.2*9.5)
173	SCREW (3.9*13)
175	SCREW (CIRCULAR-HEAD ,M4*8 STAINLESS)
181	MICROSWITCH STOPPER
198	BURNER BOX HEAT COVER
204	HANDLE TAP
206	GLASS LID FRO.PROFILE SILICON BUMPER
211	HANDLE ASSEMBLY BRACKET
212	EXHAUST PROTECTION COVER
218	SCREW (COUNTERSUNK-HEAD,3.9*7.5,BLUNT,BLK)
220	INTERVAL FRONT PANEL SPRING
227	FIXED DAWER PANEL ASSEMBLY BRACKET
230	SO OVEN DOOR BRACKET UPPEP PIN
231	SO OVEN DOOR BRACKET LOWER PIN
237	DOUBLE GLAZED DOOR METALTRIM
238	OVEN DOOR HANDLE SCREW
239	HANDLE FIXING BUSH
240	SILICONE WASHER
248	SCREW (KNURLED,3.9*6.5,BLUNT TYPE)
250	GAS-ON-GLASS HOB IGNITOR HOLDER
252	WIRE SHELF FIXING CLIP
253	WIRE SHELF (RIGHT / LEFT)
257	WOK BURNER SUPPORT
262	REMOVABLE INNER GLASS SPRING

# 90 CM FREE STANDING BOTTLE COMPARTMENT COOKERS

PAGE :1 / 3

POSITION NUMBER	PART NAME
263	GRILL PAN
264	GRILL PAN HANDLE
265	GRILL PAN SET W.HANDLE
266	SCREW (M4*4T,STAINLESS)
267	MICROSWITCH SEGMENT
293	DOOR LOCK PIN
294	SIDE-OPENING DOOR LOCK WASHER
295	EXHAUST COVER
300	KNIFE BARRIER SUBPANEL
302	HANDLE BRACKET SCREW
310	FEMALE FEMALE ADAPTOR
314	SCREW (CIRCULAR-HEAD,M4*12, SPIRAL,WHITE)
315	SCREW (COUNTERSUNK-HEAD,M4*15,BLACK)
324	INSULATION
328	WASHER (ENAMELLED,BLACK)
329	GRADUAL WASHER
330	SCREW (KNURLED,M4*4)
331	KNURLED WASHER Ø4
333	GLASS LID BACK PROFILE CAP
365	SCREW (M4*22, AA7)
371	FLAP DRAWER HINGE( RIGHT / LEFT )
376	FLAT TYPE OVEN DOOR GROUP WITH SMALL INNER GLASS
377	OVEN DOOR GROUP
385	ENAMELLED COOKTOP FIXING CLIP
410	ANTI-TIP BRACKET HOLDER
413	GLASS LID COVER ING PLS.PART
432	FLAT PROF. DOOR INTERVAL GLASS
433	WASHER (BLACK)
450	GLASS LID HINGE COUNTERPART
452	LIMIT THERMOSTAT NO 70° C
479	THERMOSTAT BULB HOLDER (GAS)
487	SCREW (KNURLED,M4*12 ,INOX)
521	WIRE SADDLE
539	SPARK PLUG ASSEMBLY SEGMENT (DO/BURNER)
540	TRUNSPIT HANDLE
541	INJECTOR (GRILL/OVEN BURNER)
559	FIXED DRAWER PANEL ASSEMBLY BRACKET
560	ANTI-TIP BRACKET
561	SWITCH FOR OVEN VALVE
562	OIL INSULATION COVER (96,AISI430)
563	OIL INSULATION OUTER COVER /96
564	TRUNSPIT HOLDER WIRE
565	HOSE HOLDER WIRE
566	TUBE HOLDER WIRE
567	BOTTOM PANEL SUPPORT SHEET GROUP
568	ADJUSTABLE FEET SIDE CLOSING SHEET
573	TUBE COMPARTMENT SIDE SHEET PANEL
574	TUBE COMPARTMENT CLOSING SIDE PANEL /96
575	TUBE COMPARTMENT TOP SHEET PANEL /96
576	CAVITY ASSEMBLY BR BOTTLE COMPINNER 96
577	96 TUBE COMP HOSE TRANSITION GASKET
578	FULL OVEN DOOR BRACKET (96,TUBE COMP.)
579	DOOR ASSEMBLY BR (96,TUBE COMPARTMENT)
580	FULL SOLID TYP.OVN.DOOR INNER
581	FULL SOLID TYP.OVN.DOOR OUTER
584	THERMOCOUPLE (GRILL/OVEN BURNER)
589	WOK BURNER SUPPORT
591	OVEN DOOR MAGNET HOLDER (96,TUBE COMP)
608	LIMITER BRACKET WITH SCREWING

The exploded view given in this document are generic.They are include all possible verisons of the product.For specific part codes,please refer to the bom list of regarding model.